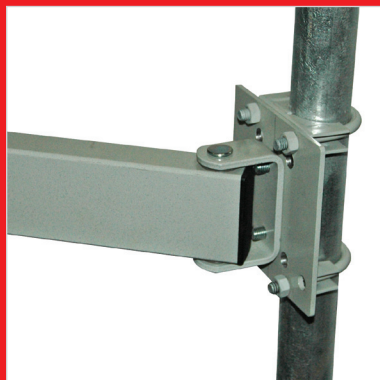


Sovella[®] Unifit[™]

Accessory Adapters



DEDICATED TO HUMAN WORKSPACE



Unifit Accessory Adapters

Unifit™ Arm adapter brackets have been created to couple Sovella's broad range of arm components by simply identifying your upright system, and selecting the adapter arm size to match the Sovella arm component you plan to use. Sovella arm components can be found on pages 42-43. Retrofit™ and floor mount uprights can be installed on existing work stations, or mounted to the floor to create a single post, or modular bay system. Modular upright bays can be configured in M20, 30, 36, 48, 53, 60, and 72 inch widths. By employing standard bay widths, you can use the full line of Sovella accessories, including bin rails, perforated and solid panels, shelving, tool trolleys, and lighting.

Unifit™ IAC Adapter

Sovella Arm Size	Order No.
small	14-94241611
large	14-94041451 •

Unifit™ Uni-Strut

Sovella Arm Size	Order No.
small	14-94241611
large	14-94041451 •

Unifit™ Tube Adapter

Sovella Arm Size	Order No.
large	14-94135129

Unifit™ Aluminum Extrusion

Sovella Arm Size	Order No.
small	14-94241611
large	14-94041451 •

Unifit™ Arlink Micro Adjust

Sovella Arm Size	Order No.
small	14-94235612
large	14-94235584

Unifit™ Wall Mount Adapter

Sovella Arm Size	Order No.
small	14-94241611
large	14-94041451 •

Unifit™ LCD Bracket

Description	Order No.
SpaceCo LCD monitor arm	14-94235619
Universal LCD bracket (no holes) 3"x4"	14-94235620
Human Scale LCD monitor arm	14-94235619

Unifit™ Keyboard Tray Bracket

Size	Order No.
6.8"W x 20.25"L	14-94035549

For Concept Motor and TL Advantage w/ dual C-Profiles.

Unifit™ Universal Mounting Bracket

Size	Order No.
Dual HD Plates - 5.25" x 5.25"	14-94235520
Single 5.25" x 5.25" Plate	14-94235623
Arlink Style Dual HD Plates - 5.25" x 5.25"	14-94235547
Arlink Style Single Plate 5.25" x 5.25"	14-94235640

Unifit™ Retrofit Slotted Uprights

Size	Order No.
19.68" w/left counter mount bracket	14-9553592
19.68" w/center counter mount bracket	14-9553566
19.68" w/right counter mount bracket	14-9553593
31.1" w/left counter mount bracket	14-9553581 •
31.1" w/center counter mount bracket	14-9553509 •
31.1" w/right counter mount bracket	14-9553580 •
39.21" w/left counter mount bracket	14-9553572
39.21" w/center counter mount bracket	14-9553510
39.21" w/right counter mount bracket	14-9553573
53.5" w/left counter mount bracket	14-9553561 •
53.5" w/center counter mount bracket	14-9553563 •
53.5" w/right counter mount bracket	14-9553562 •

Unifit™ Floor Mount Upright Kit

Size	Order No.
8" x 8" x 9" (base only, no upright)	14-9553519
base with 53" upright	14-95535138
base with 63" upright	14-95535130
base with 72" upright	14-9553571

Unifit™ Worksurface Bracket

Size	Order No.
Aluminum worksurface bracket 7.96"D x 3.15"W x .8"-2.6"H	846554-00

 <p>Unifit™ IAC Adapter IAC D4 Adapter for Sovella large and small arm components.</p>	 <p>Unifit™ Uni-Strut Adapter bracket for Sovella large and small arm components for Production Basics, Pro-Line, and all other Uni-Strut upright systems.</p>	 <p>Unifit™ Tube Adapter Works with 1" Metro, 28mm Creform, and 1.5" diameter WorkSmart Tube Systems.</p>
 <p>Unifit™ Aluminum Extrusion 80/20/Extruded Aluminium Adapter for Sovella large and small arm components.</p>	 <p>Unifit™ Arlink Micro Adjust 8000 Series Adapter for large and small arm components.</p>	 <p>Unifit™ Wall Mount Adapter Universal mounting plate for large and small arm components.</p>
 <p>Unifit™ LCD Bracket Humanscale LCD monitor arm, SpaceCo LCD monitor arm bracket adapter kits for aftermarket LCD monitor arms.</p>	 <p>Unifit™ Keyboard Tray Bracket Universal under surface keyboard mount adapter (some drilling may be required).</p>	 <p>Unifit™ Universal Mounting Bracket Universal mounting plate bracket for attaching gas action style adjustable microscope arms, and other accessories requiring additional support, and larger mounting area.</p>
 <p>Unifit™ Retrofit Slotted Uprights Light-duty upright w/clamp Retrofit upright tube w/left foot Retrofit upright tube w/ctr foot Retrofit upright tube w/right foot Available in 20", 31", 39", 53"</p>	 <p>Unifit™ Floor Mount Upright Kit Floor mount bracket and floor mount bracket with upright kits. Floor attachment hardware not included.</p>	 <p>Unifit™ Worksurface Bracket Aluminium bracket for attaching Sovella slotted uprights to existing worksurface.</p>



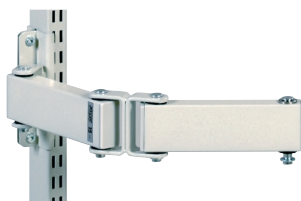
Sovella Arm Accessories

When a position changes, the height must be adjusted

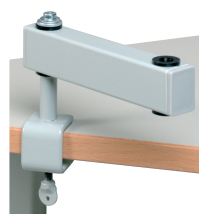
Frequent changes in the working position, such as changing from a sitting position to a standing position, require height-adjustable arm (860 985-35). The height-adjustable profile (860 997-35 in picture) can be attached to any component with arm (such as the monitor shelf arm) that is pulled down and lifted back up according to the working position. The adjustment range is 17.71 inches.



Double arm



Light arm with worksurface attachment



Document holder



Replacement arms (spare parts)

name	length inches	max Lbs	order No
Double arm, 1.57 inches	7.87 + 7.87	11	880020-35 •
Double arm, 2.36 inches	7.87 + 7.87	33	880010-35 •
Arm bracket for TL Advantage	1.57		861098-35 •
Arm bracket for TL Advantage	2.36		861099-35 •
Height-adjustable profile (17.71 inches)		33	860997-35
Light arm, task light, worksurface attachment	7.87	11	860990-35
Task light bracket for 1/2" pin style lights	7.87	11	14-9500039 •

Document holders

name	W x D inches	max Lbs	order No
Document holder A4	11.41 x 12.99	11	92835008
Document holder A3	16.45 x 12.99	11	92835009

Adjustable auxiliary top

name	size W x D inches	tilting	max Lbs	order No
Adjustable auxiliary top, ESD	22.04 x 13.38	0-25°	33	92735001
Adjustable auxiliary top, ESD	23.81 x 15.94	0-25°	33	92735002
Adjustable auxiliary top	22.04 x 13.38	0-25°	33	92741001
Adjustable auxiliary top	23.81 x 15.94	0-25°	33	92741002

Components

name	W x D x H inches	max Lbs	order No
Apparatus stand	9.84 x 9.84 x 3.54	22	92835001 •
Apparatus stand	19.68 x 9.84 x 4.92	33	92835002
Apparatus stand*	19.68 x 9.84 x 4.92	66	92835003
Box stand	22.04 x 6.88 x 4.92	33	92835005
Box stand	23.62 x 8.66 x 4.92	33	92835006
Container for plastic bins**	22.04 x 6.49 x 13.97		93135000

*Comes with large arm.

**This stand can be placed on the box stand. Space for 15 picking bins, see page 58.

Tool panel

name	W x H inches	max Lbs	order No
Tool panel small arm	10.51 x 12.00	11	92835010 •

Rotating tool frames

name	module size	W x H inches	max lbs	order No
Rotating tool frame, height-adjustable arm	M20	20.19 x 12.59	33	860864-35
Rotating tool Frame, dbl arm	M20	20.19 x 12.59	33	880865-35 •
Perforated panel	M20	18.50 x 11.81		860951-35 •
Tool trough	M20	18.50 x 5.90		860952-35 •

Adjustable Auxiliary Top



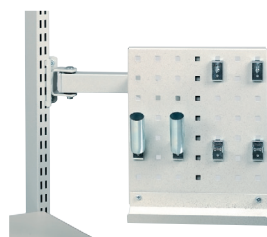
Apparatus Stand



Box Stand



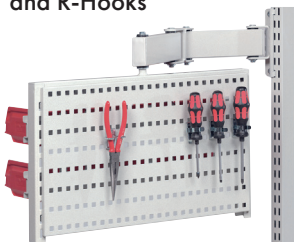
Tool Panel



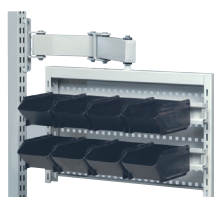
Container for Plastic Bins



Rotating Tool Frame with Perforated Panel and R-Hooks

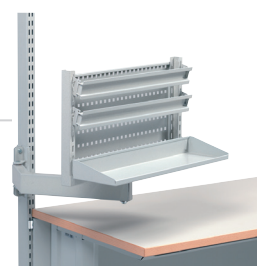


Rotating Tool Frame with M20 Perforated Panel, M20 Light Duty Bin Rails and 8 Plastic ESD Bins 30-1L-4ESD



Rotating tool frame

The rotating tool frame can be equipped with perforated panels and tool troughs. The rotating tool panel is compatible with all M20 accessories, such as the tool trough and the Bin rails.



CONTACT

HEAD OFFICE

Treston Group
Sorakatu 1
20730 Turku
Tel. 02 277 9000
Fax 02 236 1140
sales@trestongroup.com
www.trestongroup.com

FACTORY - FINLAND

Treston Oy
Sorakatu 1
20730 Turku
Tel. 02 277 9000
Fax 02 236 1140
sales@trestongroup.com
www.treston.fi

Sovella Oy
PL 33
40351 Jyväskylä
Tel. 010 4469 11
Fax 010 4469 290
sales@trestongroup.com
www.sovella.fi

FACTORY - GERMANY

Treston Germany GmbH
Profile Technology
Sülkampweg 20
32278 Kirchleengern
Tel. +49 5223 18 02 70
Fax +49 5223 18 02 72
profiltechnik@trestongroup.com
www.trestongroup.com

BENELUX

Sovella Human Workspace BV
Mechelaarstraat 17
4903 RE Oosterhout
Tel. +31 162 454 383
Fax +31 162 434 712
infoben@humanworkspace.nl
www.humanworkspace.nl

CHINA

Treston (Shanghai) Trading Co., Ltd.
10D, Majesty Building
No. 138, Pudong Avenue
Shanghai 200120

Treston:
Tel. +86 21 5835 2022
+86 21 5835 2023
Fax +86 21 6247 1838
shanghai@treston.com
www.treston.com.cn

Sovella:
Tel. +86 21 6247 1808
+86 21 6247 1828
Fax +86 21 6247 1838
saleschina@sovella.com
www.sovella.cn

FRANCE

Sovella SARL
Z.A.C. de la Bonne Rencontre
1, voie Gallo Romaine, Quincy-Voisins
77334 Meaux Cedex
Tel. +33 1 64 17 11 11
Fax +33 1 64 17 11 10
infofr@sovella.com
www.sovella.fr

GERMANY

Treston Germany GmbH
Thomas-Mann-Str. 21
22175 Hamburg
Tel. +49 40 640 10 05
Fax +49 40 64015 76
info.de@trestongroup.com
www.trestongroup.com

Treston Germany GmbH
Branch Office
Frankfurter Straße 101
65479 Raunheim
Tel. +49 6142 992 50
Fax +49 6142 218 75
mail.de@trestongroup.com
www.trestongroup.com

NORWAY

Industrial Furniture AS
Stålfjæra 1
0975 Oslo
Tel. +47 22 25 05 00
post@industrimobler.no
www.industrimobler.no

POLAND

Treston Sp. z o.o.
Skwer ks. Kard.
Wyszy skiego 5 lok.32
01-015 Warszawa
Tel. +48 22 862 99 55
Fax +48 22 632 67 01
info.pl@treston.com
www.treston.pl
www.sovella.com

RUSSIA

Treston Group Russia LLC
Saint Petersburg
Tel. +7 812 997 9691
www.treston.ru
www.sovella.ru

SWEDEN

Treston Group AB
Tumstocksvägen 9 A
187 66 Täby
Tel. +46 8 511 791 60
Fax +46 8 511 797 60
info.se@treston.com
www.treston.se

Treston Group AB
Bultgatan 40
442 40 Kungälv
Tel. +46 31 23 33 05
Fax +46 31 23 33 65
info.se@treston.com
www.treston.se

Sovella:
Tel. +46 8 625 76 80
info.se@sovella.com
www.sovella.se

GREAT BRITAIN

Treston Ltd
Treston House
5b Bone Lane, Newbury
Berkshire, RG14 5SH
Tel. +44 1635 521521
Fax +44 1635 37452
salesuk@treston.com
infouk@sovella.com
www.trestonltd.co.uk
www.sovella.co.uk

USA

Sovella Inc.
156 Bluffs Court
Canton, GA 30114
Tel. +1 770 424 0004
+1 800 437 6772
Fax +1 770 424 8066
infosusa@sovella.com
www.sovella.us

A long history in brief



Treston Group has a long history of professional furniture designer and manufacturer, and more than three decades of experience in the workspace development. Design and manufacturing plant located in Finland and Germany.

International sales network for local support and service anywhere in the world. We have offices in Europe, North America and Asia and more than 30 countries reaching a comprehensive network of selected dealers.

CONNECT with **Sovella Inc** on Social Media!



Sovella®
WWW.SOVELLA.US