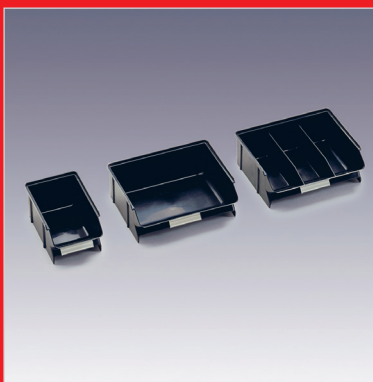


Sovella[®] Treston[™]

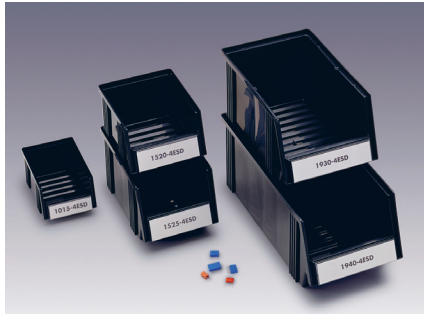
ESD Storage Systems



DEDICATED TO HUMAN WORKSPACE



ESD Storage Bins



Stacking Bin

For use on louvred panel and rail systems. Their open front design gives good access. Corrugated base eases the picking of the smallest items. Material: conductive polypropylene (PP). Accessories: Width dividers are of conductive epoxy powder coated steel. Label with shield, shields are not conductive.

Order No.	Size (D x W x H)	Dividers / Labels (ordered separately)	
1015-4ESD	6.49" x 4.13" x 2.95"	----	E-10
1520-4ESD	7.55" x 5.86" x 4.13"	----	E-15
1525-4ESD	9.84" x 5.86" x 5.11"	V-14	E-15
1930-4ESD	11.81" x 7.32" x 6.14"	V-19	E-20
1940-4ESD	15.74" x 7.32" x 6.14"	V-19	E-20

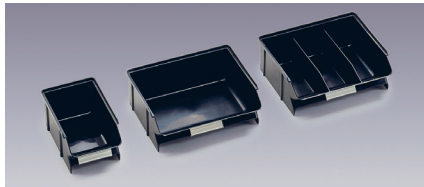


Large Stacking Bins

Material: conductive polypropylene. Made only to order. Please ask for details. Accessories: Label with shield, shields are not conductive.

Order No.	Size (D x W x H)	Labels (ordered separately)
1950-4ESD	20.08" x 7.32" x 7.17"	E-20
3040-4ESD	15.75" x 12.20" x 6.14"	E-20
3050-4ESD	19.69" x 12.20" x 7.17"	E-20

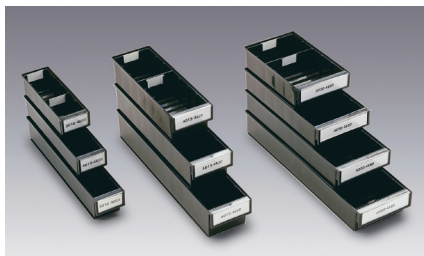
* Minimum quantity may be required.



Picking Bin

Picking bins are intended for repeated and rapid picking. For use on rail systems, table stand, or component rack. Material: conductive polystyrene (PS).

Order No.	Size (D x W x H)
30-1L-4ESD	6.29" x 3.89" x 2.75"
30-2L-4ESD	6.29" x 7.79" x 2.75"
30-23L-4ESD	6.29" x 7.79" x 2.75" (2 fixed length dividers)



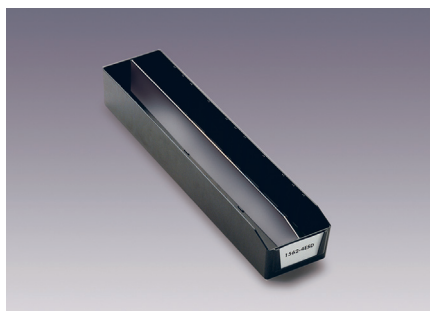
Shelf Bins

Storage bins with corrugated base are suitable for all standard shelves with a depth of 11.81", 15.74", 19.68", and 23.62". The corrugated base design eases the picking of the smallest items. These bins stack securely, as do bins of different depths when the width is the same. Material: conductive polypropylene. Full width label with protective shield is included with the bin. Label holders simply lift off when necessary. Shield is not conductive. Accessories: width dividers.

Order No.	Size (D x W x H)	Dividers (ordered separately)
3010-4ESD	11.81" x 3.62" x 3.22"	D-10-4ESD
3020-4ESD	11.81" x 7.32" x 3.22"	D-20-4ESD
4010-4ESD	15.74" x 3.62" x 3.22"	D-10-4ESD
4015-4ESD	15.74" x 5.19" x 3.93"	D-15-4ESD
4020-4ESD	15.74" x 7.32" x 3.22"	D-20-4ESD
5010-4ESD	19.68" x 3.62" x 3.22"	D-10-4ESD
5015-4ESD	19.68" x 5.19" x 3.93"	D-15-4ESD
5020-4ESD	19.68" x 7.32" x 3.22"	D-20-4ESD
6015-4ESD	23.62" x 5.19" x 3.93"	D-15-4ESD
6020-4ESD	23.62" x 7.32" x 3.22"	D-20-4ESD



ESD Storage Bins



IC Tube Storage Bin

Storage bins, with smooth sides and bases, are effective space savers. Bin 1562 is specifically designed for storing IC dispensing tubes. Material: conductive polystyrene. Label with protective shield is included with the bin. Shields are not conductive. Accessories: width or length dividers.

Order No.	Size (D x W x H)	Dividers (ordered separately)
1562-4ESD	24.60" x 5.51" x 3.54"	V-15-4ESD



Large Stacking Bins

Material: conductive polypropylene. Made only to order. Please ask for details.

Order No.	Size (D x W x H)
1949-4ESD	19.29" x 7.28" x 9.84"
3149-4ESD	19.29" x 12.20" x 9.84"

* Minimum quantity may be required.



Storage Boxes

Straight sided storage boxes of 18 and 36 liter capacity are used for internal and external transport systems. These have integral handles and stack securely together. Material: conductive polystyrene.

Order No.	Size (D x W x H)
10-18L-4ESD	21.06" x 12.72" x 5.91"
10-36L-4ESD	20" x 12.72" x 11.02"



Component Rack

Rack with three fixed shelves. Of conductive epoxy powder coated steel in light grey (RAL 7035). Component rack holds: 12 stacking bins 1015-4ESD or 12 picking bins 30-1L-4ESD or 6 picking bins 30-2L-4ESD or 6 picking bins 30-23L-4ESD. Bins ordered separately.

Order No.	Size (D x W x H)
EPL12ESD	7.87" x 17.91" x 11.42"



ESD Storage Cabinets



291-4ESD 294-4ESD



551-4ESD 554-4ESD

Small parts storage cabinets

Cabinets, which combine a stylish industrial design with practical accessories to provide flexible and efficient ESD protected small parts storage. They can be wall mounted or mounted on space-saving turntables or stood on the worktop. Available in two sizes with heights 11.42" (series 290) and 21.65" (series 500). The cabinet has a conductive polypropylene frame, galvanized steel shelves, conductive bins and labels. Earth ground via ground cord with 1 meg ohm resistor (sold separately). See page 7 for more information.

Order No.	Size (D x W x H)	Drawers	Divider
291-4ESD	7.08" x 12.20" x 11.41"	24 type L-61-4ESD	V-1-4ESD
294-4ESD	7.08" x 12.20" x 11.41"	12 type L-64-4ESD	V-4-4ESD
551-4ESD	7.08" x 12.20" x 21.65"	48 type L-61-4ESD	V-1-4ESD
554-4ESD	7.08" x 12.20" x 21.65"	24 type L-64-4ESD	V-4-4ESD



Small Parts Drawers

Available in two sizes. Accessories: width divider.

Order No.	Size (D x W x H)	Dividers (ordered separately)
L-61-4ESD	6.69" x 2.72" x 1.57"	V-1-4ESD
L-64-4ESD	6.69" x 3.62" x 2.44"	V-4-4ESD



0830ESD/1630ESD 0840ESD/1640ESD

Storage cabinets

Storage cabinets are stackable vertically and may be wall mounted or mounted on turntable assemblies. Available in two sizes with depths 11.81" (series 300) and 15.74" (series 400). The cabinet has a strong, steel frame, galvanized steel shelves, conductive bins and labels with protective shields (not conductive). Earth ground via ground cord with 1 meg ohm resistor (sold separately). See page 7 for more information.

Order No.	Size (D x W x H)	Drawers	Drawer Order No.
0830ESD	11.81" x 15.74" x 15.55"	8	3020-4ESD
1630ESD	11.81" x 15.74" x 15.55"	16	3010-4ESD
0840ESD	15.74" x 15.74" x 15.55"	8	4020-4ESD
1640ESD	15.74" x 15.74" x 15.55"	16	4010-4ESD



4840ESD 2440ESD

High density storage cabinets for the electronics industry

Designed as freestanding units. Each cabinet includes a grey conductive epoxy enamelled steel frame, galvanized steel shelves, conductive bins and labels with protective shields (not conductive). Adjustable feet are provided for fine levelling. Load capacity for the cabinet is 528lbs / 66lbs per shelf. Accessories: width dividers and caster set.

Order No.	Size (D x W x H)	Qty.	Drawer Order No.
2440ESD	16.14" x 23.82" x 34.25"	24 drawers	4020-4ESD
4840ESD	16.14" x 23.82" x 34.25"	48 drawers	4010-4ESD

Caster Set

2 conductive casters (2 nonconductive) Ø 3.94", 2 w/ brakes. Load capacity of cabinet with casters 330 lbs.

Order No.	Size (D x W x H) with casters	Qty.
PS-LHESD	16.14" x 23.82" x 38.58"	4



ESD Spacemisers and Turntables



Spacemiser / Bench Top Spacemiser

This unit consists of a combination ball bearing base/baseplate and dividing trays and top plate. Spacemiser will hold 12 small parts storage cabinets 551-4ESD/554-4ESD in three layers. Each layer contains four cabinets which are ordered separately. This unit includes ball bearing base, dividing trays and a baseplate. Bench top spacemiser will hold 2 small parts storage cabinets 291-4ESD/294-4ESD or 551-4ESD/554-4ESD. Earth ground via ground cord with 1 megohm resistor. See page 4 for more information on small parts storage cabinets.

Order No. _____ Size (D x W x H) _____

Spacemiser

12-550ESD* 19.68" x 19.68" x 68.11"

*Includes ground cord.

Bench Top Spacemiser

PTP-5ESD* 12.20" x 14.17"

(x 11.81"H with cabinets 291-4ESD or 294-4ESD, 22.05"H with cabinets 551-4ESD or 554-4ESD)

*Includes ground cord.

Storage Cabinets (for additional info, see pg 4.)

291-4ESD 7.08" x 12.20" x 11.41" (24 drawers)

294-4ESD 7.08" x 12.20" x 11.41" (12 drawers)

551-4ESD 7.08" x 12.20" x 21.65" (48 drawers)

554-4ESD 7.08" x 12.20" x 21.65" (24 drawers)



Turntables

Turntables hold 16 storage cabinets which are ordered separately. Load capacity 1760lbs. Earth ground via ground cord with protective 1 megohm resistor.

Order No. _____ Description _____

16-300ESD For storage cabinets 0830ESD & 1630ESD

16-400ESD For storage cabinets 0840ESD & 1640ESD

*Includes ground cord.



ESD Storage Trolleys



Cabinet Trolley 1

Cabinet Trolley 1

This assembly holds 2 visible storage cabinets 551-4ESD/554-4ESD, which are ordered separately and attach to perforated panels using hook R16 (831514-51). Free standing frame of epoxy powder coated in grey (RAL 7035). Includes panels, hooks, handle and four casters Ø 3.94", two with brakes. Load capacity 660 lbs. Bottom shelf with mat ordered separately.



Cabinet Trolley 2

Cabinet Trolley 2

This assembly holds 8 visible storage cabinets 551-4ESD/554-4ESD (ordered separately), and attach to perforated panels using hook R16 (831514-51). Free standing frame of epoxy powder coated in grey (RAL 7035). Includes panels, hooks, handle and four casters Ø 3.94", two with brakes. Load capacity 660 lbs. Bottom shelf with mat ordered separately.

Description	Width	
	M30	M36
Cabinet Trolley 1 ESD	14-74735003	14-74735004
Bottom shelf 1 ESD	860057-35	860059-35
Cabinet Trolley 2 ESD	14-74735007	14-74735008
Bottom shelf 2 ESD	860067-35	860069-35



Bin Trolley 1

Bin Trolley 1

Free standing frame of epoxy powder coated steel in grey (RAL 7035). 4 adjustable bin rails are included, which may be tilted 15° for easy viewing and picking. Assemblies include handle and four casters Ø 3.94", two with brakes. Total load capacity is 660 lbs. Stacking bins and bottom shelf with mat ordered separately.



Bin Trolley 2

Bin Trolley 2

Free standing frame of epoxy powder coated steel in grey (RAL 7035). 16 adjustable bin rails are included, which may be tilted 15° for easy viewing and picking. Assemblies include handle and four casters Ø 3.94", two with brakes. Total load capacity is 660 lbs. Stacking bins and bottom shelf with mat ordered separately.

Description	Width	
	M30	M36
Bin Trolley 1 ESD	14-74735011	14-74735012
Bottom shelf 1 ESD	860057-35	860059-35
Bin Trolley 2 ESD	14-74735015	14-74735016
Bottom shelf 2 ESD	860067-35	860069-35

Suitability:

Stacking Bin	Quantity/Rail	Max Quantity/trolley
		(Trolley 1/Trolley 2)
1015-4ESD	7 pcs	28 pcs/112 pcs
1520-4ESD	5 pcs	20 pcs/80 pcs
1525-4ESD	5 pcs	20 pcs/80 pcs
1930-4ESD	4 pcs	16 pcs/64 pcs



FlexFlow Frames



FlexFlow Frames

Available in footprint width sizes of 30", 36" and 53" with 3 roller beds. Max load capacity of 1320 lbs.

* Each roller bed equipped with 6 – 36"D ESD flanged roller profiles . Additional roller profiles may be added.

Order No.	Size (W x D)
C80135033	M30 x 36"
C80235033	M36 x 36"
C80335003	M53 x 36"
852727-00	ESD Flanged Roller Profile 35.43"
852731-00	ESD Roller Profile w/o Flange 35.43"



FlexFlow Frame Extensions

Available in footprint width sizes of 30", 36" and 53" with 3 roller beds. Max load capacity of 1320 lbs.

* Each roller bed equipped with 6 – 36"D ESD flanged roller profiles . Additional roller profiles may be added.

Order No.	Size (W x D)
C80135133	M30 x 36"
C80235133	M36 x 36"
C80335103	M53 x 36"
852727-00	ESD Flanged Roller Profile 35.43"
852731-00	ESD Roller Profile w/o Flange 35.43"

Specifications

Conductive polypropylene = PP

- surface resistivity $10^3 \dots 10^6$ ohm
- volume resistivity $10^3 \dots 10^6$ ohm
- temperature tolerance -4...+158°F

Conductive polystyrene = PS

- surface resistivity $10^3 \dots 10^6$ ohm
- volume resistivity $10^3 \dots 10^6$ ohm
- temperature tolerance -40...+149°F

Ground Cord

6' ground cord with 1 meg ohm resistor with female spade connect for cabinets on one end and 1/4" rind terminal on the other.

Order No.	Size
14-9000017	6' length



High Visibility ESD Awareness labels on all ESD bins, and Storage Systems.

Ground lug on all ESD Storage Cabinets & Parts Organizers.



Corrugated bottom eases the picking of the smallest items. Available on stacking bins and shelf bins only.



CONTACT

Sovella, Inc. a wholly owned subsidiary of

TRESTON
GROUP

HEAD OFFICE

Treston Group
Sorakatu 1
20730 Turku
Tel. 02 277 9000
Fax 02 236 1140
sales@trestongroup.com
www.trestongroup.com

FACTORY - FINLAND

Treston Oy
Sorakatu 1
20730 Turku
Tel. 02 277 9000
Fax 02 236 1140
sales@trestongroup.com
www.treston.fi

FACTORY - GERMANY

Treston Germany GmbH
Profile Technology
Sülkampweg 20
32278 Kirchlehn
Tel. +49 5223 18 02 70
Fax +49 5223 18 02 72
profiltechnik@trestongroup.com
www.trestongroup.com

BENELUX

Sovella Human Workspace BV
Mechelaarstraat 17
4903 RE Oosterhout
Tel. +31 162 454 383
Fax +31 162 434 712
infoben@humanworkspace.nl
www.humanworkspace.nl

CHINA

Treston (Shanghai) Trading Co., Ltd.
10D, Majesty Building
No. 138, Pudong Avenue
Shanghai 200120

Treston:
Tel. +86 21 5835 2022
+86 21 5835 2023
Fax +86 21 6247 1838
shanghai@treston.com
www.treston.com.cn

Sovella:
Tel. +86 21 6247 1808
+86 21 6247 1828
Fax +86 21 6247 1838
saleschina@sovella.com
www.sovella.cn

FRANCE

Sovella SARL
Z.A.C. de la Bonne Rencontre
1, voie Gallo Romaine, Quincy-Voisins
77334 Meaux Cedex
Tel. +33 1 64 17 11 11
Fax +33 1 64 17 11 10
infofr@sovella.com
www.sovella.fr

GERMANY

Treston Germany GmbH
Thomas-Mann-Str. 21
22175 Hamburg
Tel. +49 40 640 10 05
Fax +49 40 64015 76
info.de@trestongroup.com
www.trestongroup.com

Treston Germany GmbH
Branch Office
Frankfurter Straße 101
65479 Raunheim
Tel. +49 6142 992 50
Fax +49 6142 218 75
mail.de@trestongroup.com
www.trestongroup.com

NORWAY

Industrial Furniture AS
Stålfjæra 1
0975 Oslo
Tel. +47 22 25 05 00
post@industrimobler.no
www.industrimobler.no

POLAND

Treston Sp. z o.o.
Skwer ks. Kard.
Wyszy skiego 5 lok.32
01-015 Warszawa
Tel. +48 22 862 99 55
Fax +48 22 632 67 01
info.pl@treston.com
www.treston.pl
www.sovella.com

RUSSIA

Treston Group Russia LLC
Saint Petersburg
Tel. +7 812 997 9691
www.treston.ru
www.sovella.ru

SWEDEN

Treston Group AB
Tumstocksvägen 9 A
187 66 Täby
Tel. +46 8 511 791 60
Fax +46 8 511 797 60
info.se@treston.com
www.treston.se

Treston Group AB
Bultgatan 40
442 40 Kungälv
Tel. +46 31 23 33 05
Fax +46 31 23 33 65
info.se@treston.com
www.treston.se

Sovella:
Tel. +46 8 625 76 80
info.se@sovella.com
www.sovella.se

GREAT BRITAIN

Treston Ltd
Treston House
5b Bone Lane, Newbury
Berkshire, RG14 5SH
Tel. +44 1635 521521
Fax +44 1635 37452
salesuk@treston.com
infouk@sovella.com
www.trestonltd.co.uk
www.sovella.co.uk

USA

Sovella Inc.
156 Bluffs Court
Canton, GA 30114
Tel. +1 770 424 0004
+1 800 437 6772
Fax +1 770 424 8066
infousa@sovella.com
www.sovella.us

A long history in brief



Treston Group has a long history of professional furniture design and manufacturing, and more than three decades of experience in workplace development. Design and manufacturing plant located in Finland and Germany.

International sales network for local support and service anywhere in the world. We have offices in Europe, North America and Asia and more than 30 countries reaching a comprehensive network of selected dealers.

CONNECT with **Sovella Inc** on Social Media!



Sovella[®]
WWW.SOVELLA.US

14-9990070 US 04/12
Copyright © 2012. Sovella Inc. All rights reserved.
Specifications are subject to change without prior notice.