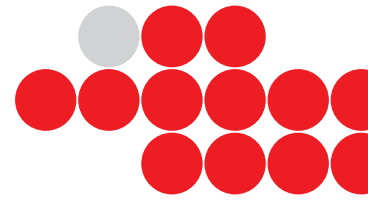


Sovella[®]
HUMAN WORKSPACE



Sovella Packaging Solutions



DEDICATED TO HUMAN WORKSPACE

www.sovella.us



Packaging Workstations

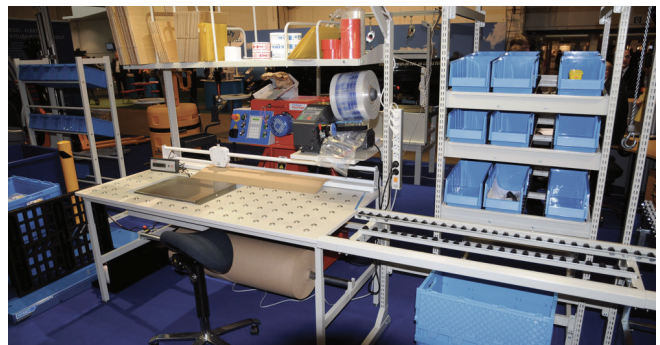
New requirements in packaging areas For many years the packaging area was comprised of a standard bench or table with storage for packaging material. This trend has changed drastically during the last few years as packaging areas are taking on additional processes including: light assembly, test, re-packaging, custom labelling, shipping and quality control. Reporting, traceability, and information sharing have become part of most pack and ship processes. This demand for information creates new technology demands as well as an organized, productive packaging environment.

Sovella - with more than 40 years of experience in manufacturing human workspace solutions - recognized this changing requirement and the products in this catalog have been specifically designed to address the demands of today's modern packaging work spaces.

The 2500+ standard items Sovella offers are easily interchangeable and enable our customers to create productive and ergonomic packaging solutions with ease.

Sovella's packaging benches are designed for activities where productivity, efficiency, and effective working conditions are of utmost importance. In shipping or packaging areas these include sorting, bagging, collating, labeling, carton packing, weighing, re-packing, order picking, relabeling, coding, spot gluing, kitting and assembly or package to order activities.

Sovella packaging solutions are used in industries such as electronics, health care (pharmaceutical, fine mechanics), luxury, aviation, nanotech, military, and clean room based technology as well as third party logistics centers.



Create Your Personal Packaging Station!



Sovella workstation frames are available in 5 standard offerings:

Concept™: sturdy and plenty of leg space, 1100 lbs capacity

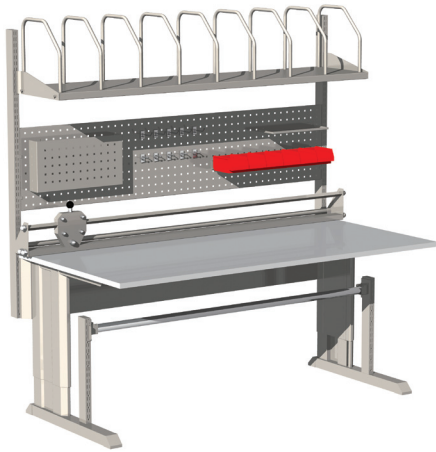
Concept™ Crank: Plenty of leg space and manual height adjustment, 1100 lbs capacity static, 440 lbs dynamic

Concept™ Motor: Ideal sit stand or task specific working conditions, 1100 lbs capacity static, 660 lbs dynamic

Cornerstone™ Table: Simple and effective, 1500 lbs capacity

FlexFlow™ Frame: Stand alone or integrated into a packing system

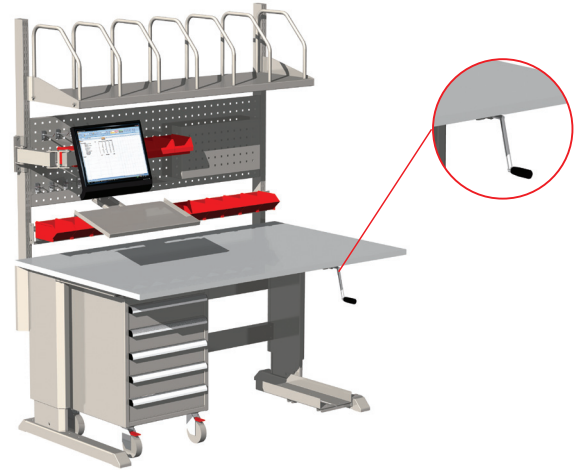
*All models can be equipped with Sovella accessories to create productive packaging solutions.



Packaging Bench

Order No 14-C10041286

Concept™ packaging workstation 36 x 60 equipped with roll storage, triple layer cutting unit, perforated tool storage plus a carton storage shelf.



Pick-and-Pack Bench

Order No 14-C10141150

Concept™ Crank workstation 36 x 60, adjustable in height and equipped with a Bin rail for small component storage, a CPU holder, Monitor/Keyboard holder, Carton storage and a Mobile Drawer unit.



Repack workstation

Order No 14-C10341240

Motorized workstation 36 x 72 with maximum storage for folded carton boxes. Tools can be easily stored in the drawer unit. Workstation comes with perforated tool plate, metal shelf M36x15.74", terminal and monitor/keyboard holder.



Pack-to-Order Cornerstone™ Bench

Order No 14-C12041105

Cornerstone™ workstation frame 36 x 60 with carton shelves, printer platform, monitor and CPU holder. Scale table is optional.



The items shown in this catalog are a small selection of Sovella's wide range of workspace solutions. Contact your local Sovella distributor for additional information.

Carton boxes, monitors, etc are for display purposes only and are not included in our offering.



Efficiency by Optimal Positioning of Components and Tools

Smart Packaging

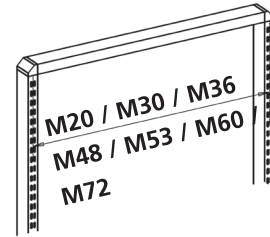
Sovella offers the world's widest range of standard interchangeable accessories that guarantee an individually optimized packing solution. Due to the modularity, Sovella packaging benches and solutions can be easily adapted to the ever changing packaging environment.

The accessories that fit between the slotted uprights are available in various width or upright module sizes. Mounting a single, double or even triple upright module to a bench allows optimal positioning of components and tools, reducing cycle times and increasing productivity while maintaining proper ergonomic posture.



Module size

The module (M) size refers to the nominal distance between two slotted uprights from the middle of the tube. The module size is used to find the appropriate accessories.



Sovella Turn Key Solutions

Many Fortune 500 companies have utilized our project services. Sovella's design-to-manufacturing capabilities are unlimited and our experience in production principle - such as lean manufacturing - are unsurpassed.

Please contact your local distributor for more information about Sovella's Project Services.

As the world's leading manufacturer of industrial furniture, we can offer turn key solutions by combining our wide range of standard items, and customized product capabilities.



Packaging Solution Table Frames



Concept™ Height Adjustable Packing Tables

Concept™ packaging worktables are designed for the needs of the packing industry, where ergonomic qualities are an important requirement. There are many possible adjustments, all components fit together seamlessly, and each detail is designed for real world functionality. The workstation adapts to the work process and the needs of the user. As a result all movements of the user can be optimized, which in turn increases performance and productivity and decreases work-related stress.

Modular design provides total integration with the existing system and the potential to flexibly adapt to changes in the environment. Concept™ worktables are height adjustable in manual, motorized and hand crank versions. All Concept™ frames can be equipped with casters to create mobile workstation solutions.



Concept™ Manual

Size	Max Load lbs	Order No.	Order No. w/ top
30" x 60" x 26.38"-44.10"	1100	10035032	*14-C10041108
36" x 60" x 26.38"-44.10"	1100	14-1003565	*14-C10041281
30" x 72" x 26.38"-44.10"	1100	10035033	*14-C10041109
36" x 72" x 26.38"-44.10"	1100	14-1003564	*14-C10041282

*Part number includes 3/4" T-mold table top worksurface.



Concept™ Handcrank

Size	Max Load lbs	Order No.	Order No. w/ top
30" x 60" x 26.38"-44.10"	500 dynamic/1100 static	10135032	*14-C10141108
36" x 60" x 26.38"-44.10"	500 dynamic/1100 static	14-1013503	*14-C10141151
30" x 72" x 26.38"-44.10"	500 dynamic/1100 static	10135033	*14-C10141109
36" x 72" x 26.38"-44.10"	500 dynamic/1100 static	14-1013504	*14-C10141152

*Part number includes 3/4" T-mold table top worksurface.



Concept™ Motor

Size	Max Load lbs	Order No.	Order No. w/ top
30" x 60" x 26.38"-44.10"	660 dynamic/1100 static	10335132	*14-C10341108
36" x 60" x 26.38"-44.10"	660 dynamic/1100 static	14-10335173	*14-C10341241
30" x 72" x 26.38"-44.10"	660 dynamic/1100 static	10335133	*14-C10341109
36" x 72" x 26.38"-44.10"	660 dynamic/1100 static	14-10335174	*14-C10341242

*Part number includes 3/4" T-mold table top worksurface.

Cornerstone™ Height Adjustable Packing Tables

Cornerstone™ worktables are standard tables that are suitable for a broad range of packaging tasks. The Cornerstone™ table is guaranteed for regular use with weights up to 1500 Lbs. This degree of strength is achieved by using a solid table structure. The Basic™ upright table is ideal for lighter use, when some additional workspace is needed. The slotted upright frame allows for the use of different accessories.



Cornerstone™ Packing Table Frame

Size	Max Load lbs	Order No.	Order No. w/ top
30" x 60" x 27.56"-43.31"	1500	14-12035136	*14-C1204196
36" x 60" x 27.56"-43.31"	1500	14-12035137	*14-C1204198
30" x 72" x 27.56"-43.31"	1500	14-12035138	*14-C1204197
36" x 72" x 27.56"-43.31"	1500	14-12035139	*14-C1204199

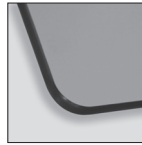
*Part number includes 3/4" T-mold table top worksurface.



Packaging Table Worksurfaces



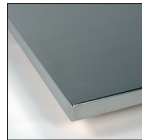
Postformed Laminate



Melamine



Maple



Stainless Steel

Worksurfaces

Size	Order No.	Size	Order No.
POSTFORMED LAMINATE		MAPLE	
30" x 60"	14-9684111	30" x 60"	14-9650013
36" x 60"	14-9684118	36" x 60"	14-9650021
30" x 72"	14-9684112	30" x 72"	14-9650014
36" x 72"	14-9684119	36" x 72"	14-9650022
MELAMINE		STAINLESS STEEL	
30" x 60"	14-9754111	30" x 60"	14-9660011
36" x 60"	14-9754114	36" x 60"	14-9660018
30" x 72"	14-9754112	30" x 72"	14-9660012
36" x 72"	14-9754115	36" x 72"	14-9660019

*Other workstation sizes and surface materials available. Contact your Sovella representative for more information.

FlexFlow Frames

FlexFlow™ Frames

FlexFlow™ shelving can be used as a standalone solution or integrated into a packaging, resulting in faster throughput, less WIP, higher productivity and managed inventories. The entire packaging process will become more efficient. FlexFlow™ can easily be customized to the application and operator using a wide range of accessories. When FlexFlow™ is equipped for, and adjusted to individual needs the whole process benefits.



FlexFlow™ Frames

Available in 2 footprint sizes of 30" x 36" and 36" x 36" with 3 roller beds.

Size	Max Load lbs	Order No.
M30 x 36"	1320	C80135033
M36 x 36"	1320	C80235033

FlexFlow™ Frame Extensions

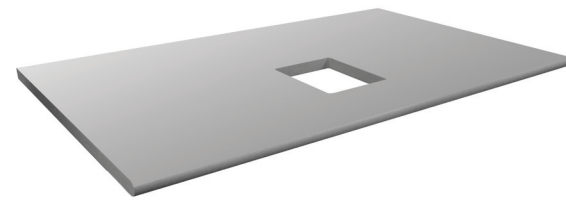
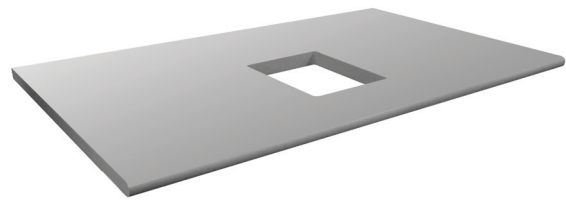
Available in 2 footprint sizes of 30" x 36" and 36" x 36" with 3 roller beds.

Size	Max Load lbs	Order No.
M30 x 36"	1320	C80135133
M36 x 36"	1320	C80235133



Scale Support

Sovella scale support provides an adjustable undersurface support system allowing the scale to be flush with the worksurface height. Scale support can accommodate scale heights from 2-6 inches and footprints up to 12" x 12" and up to 20" x 20". Worksurfaces can be custom made to order to locate the scale well in a specific location in the surface.



Packing Table Top with Scale Well

2"-6" of height adjustment

Description	Order No.
30" x 60" melamine worksurface with 20" x 20" scale well	14-9754130
36" x 60" melamine worksurface with 20" x 20" scale well	14-9754131
30" x 72" melamine worksurface with 20" x 20" scale well	14-9754132
36" x 72" melamine worksurface with 20" x 20" scale well	14-9754133
30" x 60" melamine worksurface with 12" x 12" scale well	14-9754147
36" x 60" melamine worksurface with 12" x 12" scale well	14-9754148
30" x 72" melamine worksurface with 12" x 12" scale well	14-9754149
36" x 72" melamine worksurface with 12" x 12" scale well	14-9754150

Scale Well Support

Description	Order No.
Scale well support with leveling screws for 12" x 12" x 5" top	14-94041877
Scale well support with leveling screws for 20" x 20" x 5" top	14-94041878

*Top not included.

Scale/Carton Table

Small table for positioning of scale or master carton box. Table top dimension 29.52" x 23.62", adjustable in height by using tools. Also available as a trolley.

Description	Order No.
29.52" x .75" x 21.25"-37"	14-C70141201
29.52" x .75" x 25.78"-41.53" (on wheels)	14-C70141202



Packaging Solution Components



Slotted Upright

The core in flexibility, Sovella slotted upright tubes make the workstation work. The slotted upright tube allows many Sovella accessories to be easily attached to the packing table. The tubes can be attached to Concept™ packing tables to create M30, M36, M48, M53, M60, or M72 upright bays. Upright attachment kit is only necessary when uprights are placed at each corner of the workstation.

Description	Order No.
height: 39.21", effective height: 27.95"	860367-35
height: 53.50", effective height: 42.32"	860024-35
height: 62.28", effective height: 51.18"	860025-35
Upright attachment set for Cornerstone™ frame	852581-35



Top Shelf

Metal shelf mounts to upright, 176 lbs maximum load. Shelf can be easily equipped with metal tube dividers for storage of carton boxes, envelopes, bags, etc.

Module Size	Dimensions	Max Load	Order No.
M48	45.94" x 15.74"	176	E819798-35
M53	53.97" x 15.74"	176	859013-35
M60	57.75" x 15.74"	176	859015-35
M72	69.80" x 15.74"	176	859018-35

Bottom Shelf

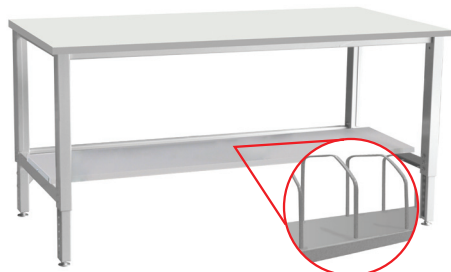
Metal shelf mounts to upright, 120 lbs maximum load. Shelf can be easily equipped with metal dividers for storage of carton boxes. Depth 23.62", brackets included.

Table Frame	Table Width	Shelf Dimensions	Max Load	Order No.
Concept	60	45.94" x 23.62"	120 lbs	14-85935182*
	72	57.75" x 23.62"	120 lbs	14-85935183*
Concept (crank & motor)	60	45.94" x 23.62"	120 lbs	859025-35
	72	57.75" x 23.62"	120 lbs	859028-35
Cornerstone	60	57.79" x 15.74"	120 lbs	859035-35
	72	69.80" x 15.74"	120 lbs	859038-35

*These items include the bar for the Concept table frame.

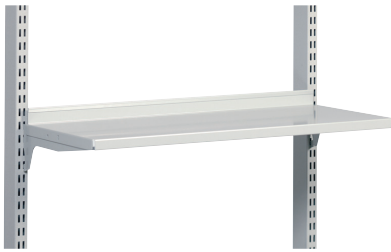


859025-35
859028-35



Optional Packaging
Shelf Dividers

859035-35
859038-35



Steel Shelf

Steel shelves can be mounted at a 0° or 20° angle and come in two depths. 11.81" and 15.74".

Module Size	Shelf Dimensions	Max Load	Order No.
M30	28.25" x 11.81"	110 lbs	836028-35
M30	28.25" x 15.74"	110 lbs	852770-35
M36	35.03" x 11.81"	110 lbs	852283-35
M36	35.03" x 15.74"	110 lbs	852769-35
M53	52.75" x 11.81"	110 lbs	860787-35
M53	52.75" x 15.74"	110 lbs	860788-35



Steel Dividers

Set of dividers for storage needs. Carton dividers are attached on top or bottom shelf in 4.92" spacing.

Description	Order No.
Metal plate dividers for envelopes, 11.22" x 7.48" - includes 2 pcs	861116-35
Tube divider set Ø .62" x 13.22" x 11.81" - includes 4 pcs	859010-35

861116-35



859010-35



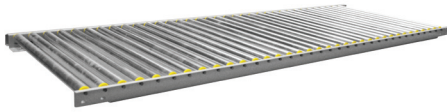
Carton Trolley

Metal trolley for storage of cartons under the table. Trolley is equipped with two swivel and two fixed casters and comes with 7 metal tube dividers. Maximum load 120 lbs.

Size	Order No.
45.94" x 23.62" x 4.72"	859070-41



Packaging Solution Components



Roller Conveyor Segment for Packing Table

Make life easy! Equip your packing table with a Sovella roller conveyor segment. The specially designed conveyor front rail guarantees productive and ergonomic operation, while the galvanized rolls last a lifetime. Conveyor is 23.62" wide and available in several lengths. Special dimensions and supporting structures upon request.



Description	Size	Order No.
24 x 60	59.05" x 27.55" x 2.36"	859090-41
24 x 72	70.86" x 27.55" x 2.36"	859092-41
H-Leg track bracket pair		890290-35



Under Surface Roll Storage

Metal tube for storage of packing material under table top. Roll storage comes with attachment bracket. Maximum load 88 lbs. Roll diameter Ø1.49".

859044-35
859045-35

Table Frame	Table Width	Roll Storage Dimensions	Max Width	Order No.
Concept	60	55.51" x 2.36" x 19.48"	47.24"	859044-35
	72	67.51" x 2.36" x 19.48"	59.05"	859045-35



859046-35
859047-35

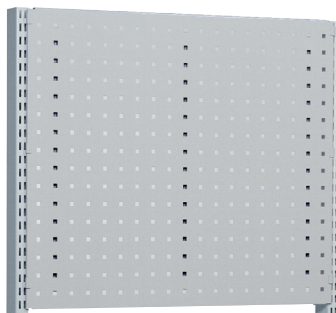
Basic	60	59.05" x 1.57" x 1.57"	47.24"	859046-35
	72	70.86" x 1.57" x 1.57"	59.05"	859047-35



Roll Holder (upright)

Roll holder mounts to upright. Roll diameter Ø1.49".

Module Size	Roll Storage Dimensions	Max Load	Order No.
M30	27.875" x Ø1.49"	88 lbs.	14-94041258
M36	51.57" x Ø1.49"	88 lbs.	14-94041252
M48	45.68" x Ø1.49"	88 lbs.	14-94051253
M53	51.57" x Ø1.49"	88 lbs.	859040-35
M60	57.28" x Ø1.49"	88 lbs.	859041-35
M72	69.29" x Ø1.49"	88 lbs.	859042-35



Perforated Panels

Perforated panels are the best solution for storage of tools and equipment. Sovella perforated panels are 15.35" high and mount to the uprights. A wide range of hooks are available, please check the Sovella product catalog for more information.

Size	Order No.
M30 29" x 15.35"	861511-35
M36 34.29" x 15.35"	861516-35
M48 47" x 15.35"	E816427-35
M53 51.88" x 15.35"	861521-35
M60 58.03" x 15.35"	861526-35
M72 69.84" x 15.35"	861531-35

Packaging Solution Components

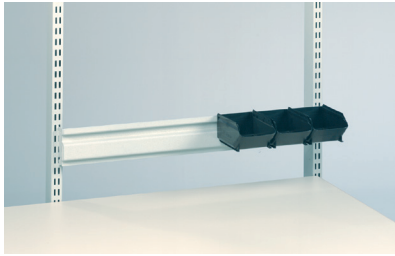


For use with Sovella Perforated Panels. See page 10 for perforated panels and information.

<p>R-1 Hook 5 hooks per package</p>  <p>Size 1.96" L x Ø .157" 3.93" L x Ø .236" 5.90" L x Ø .236" 7.87" L x Ø .236"</p> <p>Order No. 853207-51 853211-51 853213-51 853215-51</p>	<p>R-2 Hook 5 hooks per package</p>  <p>Size 1.29" L x Ø .118" x .66" W 1.69" L x Ø .157" x 1.57" W</p> <p>Order No. 853218-51 853220-51</p>	<p>R-10 Hook 5 hooks per package</p>  <p>Size 1.10" L x .354" W 1.29" L x .669" W</p> <p>Order No. 853227-51 853228-51</p>
<p>R-19 Hook 5 hooks per package</p>  <p>Size Ø .511" W Ø .748" W Ø .866" W</p> <p>Order No. 853231-51 853232-51 853233-51</p>	<p>R-29 Hook 5 hooks per package</p>  <p>Size 1.57" L 2.36" L 3.14" L</p> <p>Order No. 853234-51 853235-51 853236-51</p>	<p>R-35 Hook 5 hooks per package</p>  <p>Size .669" L x 1.37" W .669" L x 2.16" W</p> <p>Order No. 853239-51 853240-51</p>
<p>Paper/Label Roll Holder 1 hook per package</p>  <p>Size Supports roll materials 3" W x 11.81" L x 5.5" diameter</p> <p>Order No. 854043-35</p>	<p>R-46 Hook and Bin 1 hook per package</p>  <p>Size 4.13" W x 4.40" L x 2.92" H 4.13" W x 24.96" L x 2.92" H</p> <p>Order No. 831794-51 839086-51</p>	<p>R-37 Hook 1 hook per package</p>  <p>Size Ø 1.57" Ø 2.36" Ø 3.14"</p> <p>Order No. 831433-51 831441-51 831603-51</p>
<p>Folder Compartment 1 hook per package</p>  <p>Size 18.34" x 3.54" x 9.44"</p> <p>Order No. 854040-35</p>	<p>R-24 Hook 1 hook per package</p>  <p>Size 2.55" L x Ø .669" 3.14" L x Ø 1.02" 3.93" L x Ø 1.65"</p> <p>Order No. 831700-51 831719-51 852167-51</p>	<p>R-33 Hook 1 hook per package</p>  <p>Size 1.18" H x Ø 3.54"</p> <p>Order No. 832162-51</p>



Packaging Solution Components



Bin Rail

Metal bin rail for storage of plastic bins, 110 lbs. maximum load. Bin rail can be mounted at a 0° or 15° angle for ergonomic operation. Please check Sovella catalog for various plastic bins.

Size	Order No.
M30 29.21" x 3.54"	846450-35
M30 29.21" x 2.12" (Light bin rail, 22lbs max)	860955-35
M36 35.23" x 3.54"	852025-35
M36 35.23" x 2.12" (Light bin rail, 22lbs max)	860956-35
M48 47.04" x 3.54"	E814152-35
M53 52.87" x 3.54"	859001-35
M60 58.89" x 3.54"	E813794-35
M72 70.66" x 3.54"	E814409-35



Bin Rail Extension

Extension bracket pair for bin rail. Bin rail can be mounted at a 0° or 15° angle for ergonomic operation. Please check Sovella catalog for various plastic bins.

Description	Order No.
Bin rail extension 4.72"	860915-35
Bin rail extension 7.08"	860916-35
Bin rail extension 9.44"	860917-35



Container 9074

Container 9075

Container 9080

Plastic Bins

Description	Size	Order No.
Container 9074, capacity 3.7, red	5.82" x 9.84" x 5.11"	851 622-00
Container 9074, capacity 3.7, black	5.82" x 9.84" x 5.11"	851 622-18
Container 9075, capacity 1, red	4.13" x 6.69" x 2.92"	851 623-00
Container 9075, capacity 1, black	4.13" x 6.69" x 2.92"	851 623-18
Container 9080, capacity 1, red	4.13" x 6.69" x 2.92"	850 560-00
Container 9080, capacity 1, black	4.13" x 6.69" x 2.92"	850 560-18



Chem/Bottle Shelf

Description	Order No.
Chem Shelf M30 x 4.5"D x 3.125"H	14-94235610
Chem Shelf M36 x 4.5"D x 3.125"H	14-94235973
Chem Shelf M48 x 4.5"D x 3.125"H	14-94235646
Chem Shelf M60 x 4.5"D x 3.125"H	14-94235647
Chem Shelf M72 x 4.5"D x 3.125"H	14-94235648



Light & Balancer Rail

The light balancer rails guarantee perfect positioning of overhead lighting and simultaneously allows the use of a tool balancer. The light balancer rail comes with one sliding trolley and is fully adjustable. Max load 33 lbs.

Description	Dimensions	Order No.
Light & rail M36	35.43" x 19.68"-27.55" x 13.77"	91835007
Light & rail M48	47.24" x 19.68"-27.55" x 13.77"	91835010
Light & rail M53	53.14" x 19.68"-27.55" x 13.77"	91835011
Light & rail 2XM30	59.05" x 19.68"-27.55" x 13.77"	91835006
Light & rail 2XM36	70.86" x 19.68"-27.55" x 13.77"	91835008

Packaging Solution Components



Tool Balancer

Description	Order No.
Tool balancer .5-1.5 lbs tool	14-9600009
Tool balancer 1.5-3.0 lbs tool	14-9600010
Tool balancer 3.0-5.0 lbs tool	14-9600011



Overhead Lights

Optimal packing conditions require optimal light. Sovella lights are specially designed according to the EN 12464-1 to ensure higher productivity by enhanced ergonomics. Attached to the light balancer rail. Other light options available in the full line Sovella catalog.

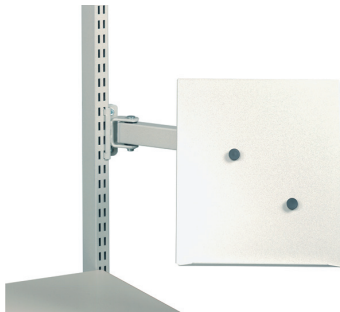
Description	Order No.
42" overhead light, 2-36" florescent tubes	14-9503522
54" overhead light, 2-48" florescent tubes	14-9503524



Energy Rails

Vertical power strip with 6 outlets and an on/off switch, mounts to uprights vertically. Horizontal power strip with an on/off switch, mounted with bin rail between upright, M36 has 6 outlets, M60, M53, and M72 have 12 outlets. Extra space can be used for plastic bins.

Description	Order No.
Vertical power strip	14-9113528
Horizontal power strip M30	14-9113505
Horizontal power strip M36	14-9113510
Horizontal power strip M48	14-9113517
Horizontal power strip M53	14-91135137
Horizontal power strip M60	14-9113521
Horizontal power strip M72	14-9113525



Document Holder on arm

Metal document holder attaches to the upright. Easily adjustable using the double arm, maximum load 11 lbs.

Description	Size	Order No.
Document holder A4	11.41" x 12.99"	92835008
Document holder A3	16.45" x 12.99"	92835009



Bottle holder

Bottle holder for storage of liquids safely below the table top. Mounts to concept, concept crank, and concept motor table frame upright.

Size	Order No.
3.93" x Ø3.93"	859063-35



Packaging Solution Components



Drawer Unit 35/15

Drawer unit with one drawer and lock, suspended under table top. Attachment set required per table type.

Size	Max load	Order No.
13.77" x 17.71" x 5.82"	22 lbs.	8600400-35



Drawer Unit 35/22

Drawer unit with two drawers and lock, suspended under table top. Attachment set required per table type.

Size	Max load	Order No.
14.96" x 20.47" x 10.23"	66 lbs.	860054-35



Drawer Unit 35/47

Drawer unit with one drawer and locker with door, with locks, suspended under table top. Attachment set required per table type.

Drawer Unit 35/47 with casters

Drawer unit 35/47 with caster kit to convert to mobile pedestal.

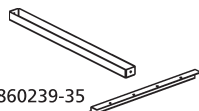
Size	Max load	Order No.
13.77" x 17.71" x 18.50"	55 lbs.	860972-35
13.77" x 17.71" x 21.85"	55 lbs.	860918-35



Drawer Unit 38

Heavy duty metal drawer unit with two drawers and lock, suspended under table top. Opening 100%. Attachment set required per table type.

Size	Max load	Order No.
14.96" x 20.47" x 10.23"	66 lbs.	60535001



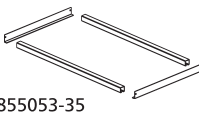
860239-35

Attachment Set for Drawer Units

Attachment set to mount the drawer units under the various table tops.



854463-35



855053-35

Table Frame	Attachment Bracket
	Order No.

Concept, 30 deep 860930-35

Concept, 36 deep 860239-35

Concept motor 854463-35

Basic, 30 deep 855052-35

Basic, 36 deep 855053-35

38 Drawer unit not suitable for concept crank fram type workstation.



Drawer Unit 45 with Casters

Drawer Unit with 3 drawers (2 x 5.90", 1 x 7.87") and 4 swivel casters, 2 with brakes. Unit comes with rubber mat on top. Opening 100%.

Size	Max load	Order No.
17.71" x 20.47" x 26.96"	330 lbs ttl 120 lbs/drawer	60635307



Triple Layer Cutting Unit

Cutting unit for carton, paper and plastic bubble foil, designed to work with three different packing materials at once. Available in various lengths.

Description	Size	Order No.
M53 cutting unit	53.38" x 5.11" x 9.05", Effective width: 39.37"	852601-00
M60 cutting unit	61.25" x 5.11" x 9.05", Effective width: 47.24"	852602-00
M72 cutting unit	73.07" x 5.11" x 9.05", Effective width: 62.99"	852606-00



Roll Dispenser Stand

Roll dispenser stand for one roll, freestanding.

Module	Max roll width	Max roll diameter	Max total roll weight	Frame dimensions	Order No.
M53	47"	31.49"	440 lbs.	54.33" x 28.14" x 39.37"	859103-35
M60	54"	31.49"	440 lbs.	60.23" x 28.14" x 39.37"	859105-35
M72	66"	31.49"	440 lbs.	72.04" x 28.14" x 39.37"	859108-35
M80	74"	31.49"	440 lbs.	78.64" x 28.14" x 39.37"	14-85935170



Roll Dispenser Stand, Mobile

Roll dispenser stand for one roll on four swivel casters, 2 with brake.

Module	Max roll width	Max roll diameter	Max total roll weight	Frame dimensions	Order No.
M53	47"	31.49"	440 lbs.	54.33" x 28.14" x 39.37"	859113-35
M60	54"	31.49"	440 lbs.	60.23" x 28.14" x 39.37"	859115-35
M72	66"	31.49"	440 lbs.	72.04" x 28.14" x 39.37"	859118-35
M80	74"	31.49"	440 lbs.	78.64" x 28.14" x 39.37"	14-85935171



Cutting Stand

Stand for up to three rolls, comes standard with two roll holder sets and one cutting unit on arms.

Module	Cutting width	Max roll diameter	Max total roll weight	Frame dimensions	Order No.
M53	39.37"	23.62"	440 lbs.	54.33" x 34.25" x 59.05"	859313-35
M60	47.24"	23.62"	440 lbs.	60.23" x 34.25" x 59.05"	859315-35
M72	62.99"	23.62"	440 lbs.	72.04" x 34.25" x 59.05"	859318-35



Packaging Solution Components



Extra Roll Holder Set, Complete

Extra roll holder set for cutting stand, comes with Ø1.49" tube.

Description	Size	Order No.
M30 Roll holder set, complete	30" x Ø1.49"	14-85935193
M36 Roll holder set, complete	36" x Ø1.49"	14-85935194
M48 Roll holder set, complete	48" x Ø1.49"	14-85935190
M53 Roll holder set, complete	51.57" x Ø1.49"	859040-35
M60 Roll holder set, complete	57.28" x Ø1.49"	859041-35
M72 Roll holder set, complete	69.29" x Ø1.49"	859042-35
M80 Roll holder set, complete	78.64" x Ø1.49"	14-85935172



Extra Cutting Set, Complete

Extra cutting unit set for cutting stand, comes with one cutting unit and one pair of arms.

Description	Size	Order No.
M53 Cutting unit set, complete	53.54" x 19.29" x 24.01"	859123-35
M60 Cutting unit set, complete	59.44" x 19.29" x 24.01"	859125-35
M72 Cutting unit set, complete	71.25" x 19.29" x 24.01"	859128-35

Packaging Solution Technology Components



Terminal/Folder Holder

Easy storage of terminal or document binders at the packing table. Mounts to uprights, maximum load 11 lbs.

Size	Order No.
5.11" x 11.41" x 12.99"	860983-35



Printer Platform Stationary

Auxiliary top suitable for placement of label printers, mounts to upright. Left and right version available. Maximum load 88 lbs.

Description	Size	Order No.
Auxiliary top left from upright	15.74" x 19.68"	92641001
Auxiliary top right from upright	15.74" x 19.68"	92641002



Printer Platform Extendable

Printer shelf with extendable platform for easy access to printer for service and label replacement. Mounts to upright, maximum load 66 lbs.

Size	Order No.
11.02" x 19.68"	859060-35
13.5" x 19.68"	14-94235579



860552-35
860740-35

854440-35

PC Holder

PC storage at the packing table. Mounts to table frame.

Description	Size	Order No.
PC holder, concept table	7.08"-8.85" x 17.71" x 1.96"	860552-35
PC holder, concept motor table	7.08"-8.85" x 17.71" x 1.96"	860740-35
PC holder, concept basic table	7.08"-8.85" x 17.71" x 1.96"	854440-35



Computer Cabinet

Protects equipment from dust and dirt, even in the most demanding conditions. The computer cabinet is pressurized and equipped with an air filter that keeps the dust out. A screen up to a maximum size of 19" will fit in the computer cabinet.

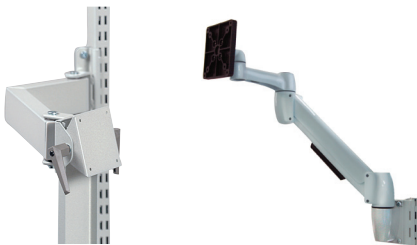
Size	Order No.
31.49" x 19.68" x 62.99"	854364-35



CPU Cabinet

Fully enclosed cabinet with lock. CPU shelf slides out on drawer slides for easy access. Maximum weight 80 lbs.

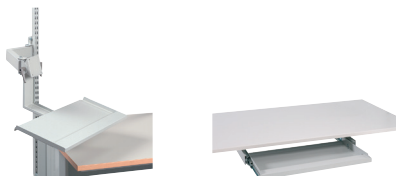
Size	Order No.
12.79" x 21.65" x 22.04"	861120-35



LCD Arms

Easy installation of the LCD monitor on the packing station. The LCD holder on a double arm gives the benefit of a clean table top, while the monitor is ergonomically positioned and fully adjustable. Suitable for Vesa 75 and 100 monitor standards.

Description	Max Load	Order No.
LCD holder on double arm	33 lbs.	93035002
Height adjustable LCD arm with bracket	33 lbs.	14-9413565



860941-35

92535001

Keyboard Tray

Description	Max Load	Order No.
Keyboard tray for LCD holder on 18.89" x 10.23"	11 lbs.	860941-35
Keyboard tray, mounted under basic or Concept table top, 24.80" x 15.74"	22 lbs.	92535001
Articulating Keyboard Tray		14-94235068



14-94235068



Packaging Solution Trolleys and Carts

Sovella industrial trolleys cover both light and heavy industrial applications. Each trolley can be customized to suit the customer's requirements.



Worktop Trolley

A great solution when you need a mobile workspace. The height can be adjusted from 25.78 to 41.53 inches.

Size	Max Load	Order No.
29.52" x 19.68" x 25.78"-41.53"	330 lbs.	C70141001



Ergo Trolley

The ergo trolley provides extra workspace. The height is continuously adjustable from 25.59 to 35.43 inches in the same way as the Concept work table.

Size	Max Load	Order No.
29.52" x 19.68" x 25.59"-35.43"	330 lbs.	860422-41

Optional Lower Shelf

Size	Order No.
23.42" x 18.89"	860425-35



Heavy-duty Trolley 1 and 2

Heavy-duty trolleys, as their name indicates, are ideal for moving heavy load. Their special casters support extremely heavy weights. The total capacity of the basic model is up to 1320 lbs! Equipped with two fixed casters (Ø 6.29") and two swivel casters with brakes.

Name	Order No.
Trolley 1	C75041001
Trolley 2	C75041002



Ergo Trolley

Packaging Solution Trolleys and Carts



Multi Trolley

Multi trolleys provide an ergonomic mobile workstation. Available in three widths: M20, M30, M36. This means that all our module-sized accessories can be used with the trolleys. Equipped with four swivel casters (Ø 3.93"), two of which have brakes. ESD versions are also available. Maximum total load 660 lbs.



Name	Order No.
Multi Trolley 1, M20	C72141001
Multi Trolley 1, M30	C72141002
Multi Trolley 1, M36	C72141003
Multi Trolley 2, M20	C72241001
Multi Trolley 2, M30	C72241002
Multi Trolley 2, M36	C72241003

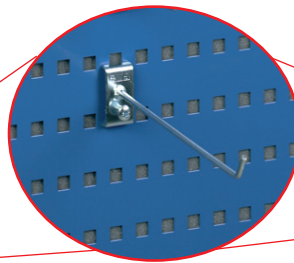
Basic Trolley

Equip your trolleys with shelves, tops, and other accessories to fit any application, such as transportation or tool storage. All trolleys are equipped with four swivel casters (Ø 5.90"), two of which have brakes. The basic trolley can be combined with all the M30 accessories. Maximum total load 770 lbs.



C 740 41 001

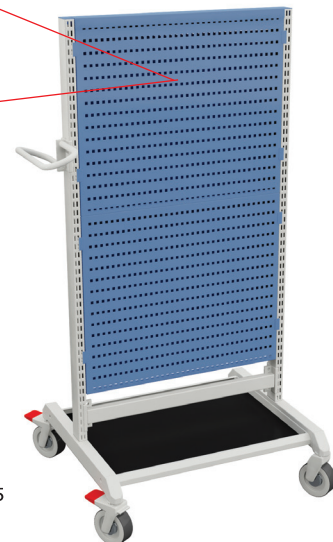
Name	Order No.
Basic Trolley 1, 31.49" x 28.14" x 64.96"	C74041001
Basic Trolley 2, 31.49" x 28.14" x 64.96"	C74007002
Basic Trolley 5, 31.49" x 28.14" x 64.96"	C74007005



See page 11 for pegboard hooks



C 740 07 002



C 740 07 005

CONTACT

Sovella, Inc. a wholly owned subsidiary of

TRESTON
GROUP

HEAD OFFICE

Treston Group
Sorakatu 1
20730 Turku
Tel. 02 277 9000
Fax 02 236 1140
sales@trestongroup.com
www.trestongroup.com

FACTORY - FINLAND

Treston Oy
Sorakatu 1
20730 Turku
Tel. 02 277 9000
Fax 02 236 1140
sales@trestongroup.com
www.treston.fi

Sovella Oy
PL 33
40351 Jyväskylä
Tel. 010 4469 11
Fax 010 4469 290
sales@trestongroup.com
www.sovella.fi

FACTORY - GERMANY

Treston Germany GmbH
Profile Technology
Sülkampweg 20
32278 Kirchleengern
Tel. +49 5223 18 02 70
Fax +49 5223 18 02 72
profiltechnik@trestongroup.com
www.trestongroup.com

BENELUX

Sovella Human Workspace BV
Mechelaarstraat 17
4903 RE Oosterhout
Tel. +31 162 454 383
Fax +31 162 434 712
infoben@humanworkspace.nl
www.humanworkspace.nl

CHINA

Treston (Shanghai) Trading Co., Ltd.
10D, Majesty Building
No. 138, Pudong Avenue
Shanghai 200120

Treston:
Tel. +86 21 5835 2022
+86 21 5835 2023
Fax +86 21 6247 1838
shanghai@treston.com
www.treston.com.cn

Sovella:
Tel. +86 21 6247 1808
+86 21 6247 1828
Fax +86 21 6247 1838
saleschina@sovella.com
www.sovella.cn

FRANCE

Sovella SARL
Z.A.C. de la Bonne Rencontre
1, voie Gallo Romaine, Quincy-Voisins
77334 Meaux Cedex
Tel. +33 1 64 17 11 11
Fax +33 1 64 17 11 10
infofr@sovella.com
www.sovella.fr

GERMANY

Treston Germany GmbH
Thomas-Mann-Str. 21
22175 Hamburg
Tel. +49 40 640 10 05
Fax +49 40 64015 76
info.de@trestongroup.com
www.trestongroup.com

Treston Germany GmbH
Branch Office
Frankfurter Straße 101
65479 Raunheim
Tel. +49 6142 992 50
Fax +49 6142 218 75
mail.de@trestongroup.com
www.trestongroup.com

NORWAY

Industrial Furniture AS
Stålfjæra 1
0975 Oslo
Tel. +47 22 25 05 00
post@industrimobler.no
www.industrimobler.no

POLAND

Treston Sp. z o.o.
Skwer ks. Kard.
Wyszy skiego 5 lok.32
01-015 Warszawa
Tel. +48 22 862 99 55
Fax +48 22 632 67 01
info.pl@treston.com
www.treston.pl
www.sovella.com

RUSSIA

Treston Group Russia LLC
Saint Petersburg
Tel. +7 812 997 9691
www.treston.ru
www.sovella.ru

SWEDEN

Treston Group AB
Tumstocksvägen 9 A
187 66 Täby
Tel. +46 8 511 791 60
Fax +46 8 511 797 60
info.se@treston.com
www.treston.se

Treston Group AB
Bultgatan 40
442 40 Kungälv
Tel. +46 31 23 33 05
Fax +46 31 23 33 65
info.se@treston.com
www.treston.se

Sovella:
Tel. +46 8 625 76 80
info.se@sovella.com
www.sovella.se

GREAT BRITAIN

Treston Ltd
Treston House
5b Bone Lane, Newbury
Berkshire, RG14 5SH
Tel. +44 1635 521521
Fax +44 1635 37452
salesuk@treston.com
infouk@sovella.com
www.trestonltd.co.uk
www.sovella.co.uk

USA

Sovella Inc.
156 Bluffs Court
Canton, GA 30114
Tel. +1 770 424 0004
+1 800 437 6772
Fax +1 770 424 8066
infosusa@sovella.com
www.sovella.us

A long history in brief



Treston Group has a long history of professional furniture design and manufacturing, and more than three decades of experience in workplace development. Design and manufacturing plant located in Finland and Germany.

International sales network for local support and service anywhere in the world. We have offices in Europe, North America and Asia and more than 30 countries reaching a comprehensive network of selected dealers.

CONNECT with **Sovella Inc** on Social Media!



Sovella®
WWW.SOVELLA.US