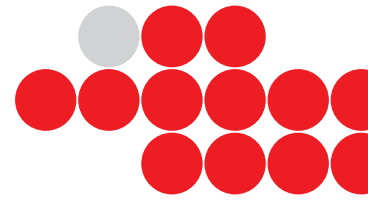


**Sovella**<sup>®</sup>  
HUMAN WORKSPACE



# Workstation



DEDICATED TO HUMAN WORKSPACE

[www.sovella.us](http://www.sovella.us)



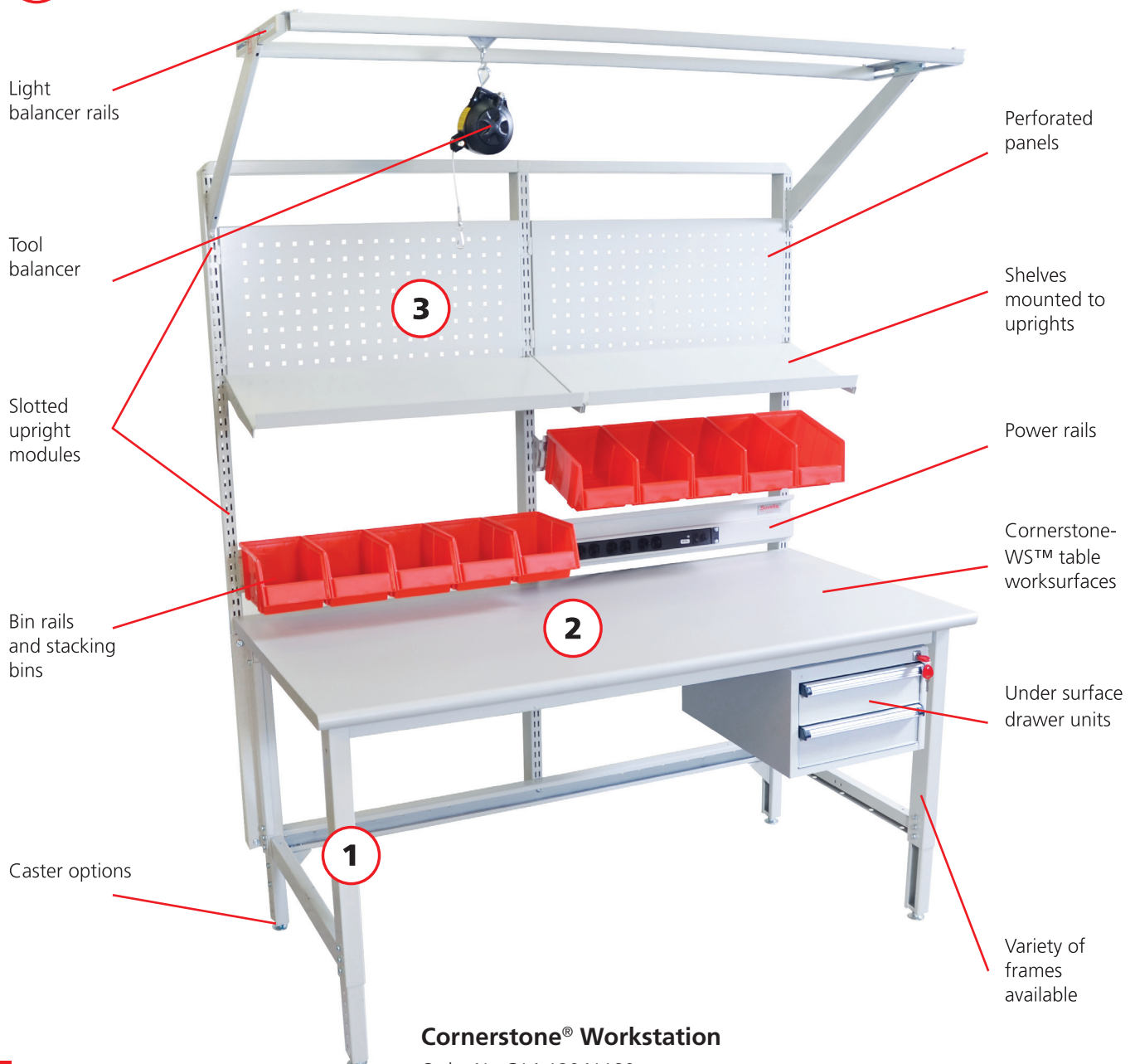
# NEW Cornerstone® Workstation

Cornerstone® worktables are standard tables that are suitable for a broad range of tasks, including but not limited to: testing, packing, repairing, inspecting. The Cornerstone® table is guaranteed for regular use

with weights up to 1500 Lbs. This degree of strength is achieved by using a solid table structure. The slotted upright frame allows for the use of different accessories.

## Three easy steps to design your own Cornerstone® Upright workstation:

- 1 Select the table frame: Cornerstone® workstation.
- 2 Select a worksurface to suit the frame.
- 3 Equip with accessories.

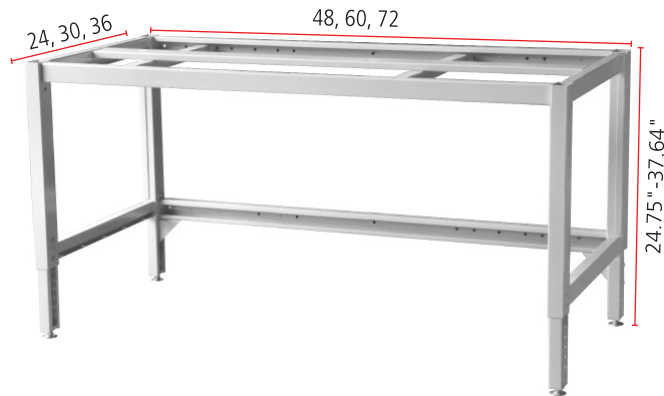


**Cornerstone® Workstation**

Order No C 14-12041180 •



**1 Select the workstation frame.**



**Cornerstone® workstation frame**

| table frame W x D inches | max Lbs | order No    |
|--------------------------|---------|-------------|
| 48 x 24                  | 1500    | 14-12035140 |
| 60 x 24                  | 1500    | 14-12035141 |
| 72 x 24                  | 1500    | 14-12035142 |
| 48 x 30                  | 1500    | 14-12035135 |
| 60 x 30                  | 1500    | 14-12035136 |
| 72 x 30                  | 1500    | 14-12035138 |
| 48 x 36                  | 1500    | 14-12035143 |
| 60 x 36                  | 1500    | 14-12035137 |
| 72 x 36                  | 1500    | 14-12035139 |

The height is steplessly adjustable from 24.75 to 37.64 inches including glide and top. Upright attachment brackets included.

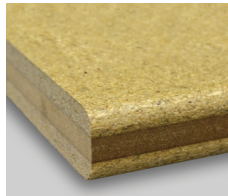
The Cornerstone® workstation frame has mounting locations for all standard Sovella slotted upright modules. 63" height uprights are the only applicable uprights for Cornerstone® table frames. All Cornerstone® Workstations and Accessories are painted with Sovella's proprietary ESD painting process.

**2 Select a worksurface to suit the frame.**



**Postformed worksurface**

Grey Laminate Surface with Postformed 180 Degree radius front edge. Available in both non-ESD Laminate and MicaStat ESD laminate.



**Shop Top worksurface**

Industrial grade particle board surface with medium-density fiberboard (MDF) or lumber core. Lacquer finish. Overall thickness of 1 1/2".

**Worksurfaces**

| workstation frame size W x D inches | non-ESD Postformed order No | ESD Postformed order No | Shop Top order No |
|-------------------------------------|-----------------------------|-------------------------|-------------------|
| 48 x 24                             | 14-9684103                  | 14-9703503              | 14-9784101        |
| 60 x 24                             | 14-9684104                  | 14-9703504              | 14-9784102        |
| 72 x 24                             | 14-9684105                  | 14-9703505              | 14-9784103        |
| 48 x 30                             | 14-9684110                  | 14-9703510              | 14-9784105        |
| 60 x 30                             | 14-9684111                  | 14-9703511              | 14-9784106        |
| 72 x 30                             | 14-9684112                  | 14-9703512              | 14-9784107        |
| 48 x 36                             | 14-9684117                  | 14-9703517              | 14-9784110        |
| 60 x 36                             | 14-9684118                  | 14-9703518              | 14-9784111        |
| 72 x 36                             | 14-9684119                  | 14-9703519              | 14-9784112        |

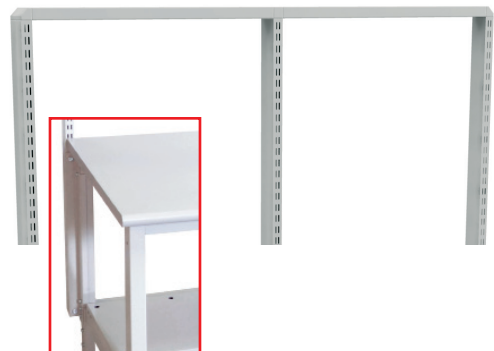
**3 Equip with accessories.**

**Upright Modules - 63"H**

(Effective height - 39.5")

| Size                           | Order No   |
|--------------------------------|------------|
| 1 x M48 Single Bay upright kit | 14-907350  |
| 1 x M53 Single Bay upright kit | 14-9073511 |
| 1 x M60 Single Bay upright kit | 14-9073512 |
| 1 x M72 Single Bay upright kit | 14-9073513 |
| 2 x M30 2-30" Upright Bays     | 90335002   |
| 2 x M36 2-36" Upright Bays     | 90435002   |
| Single Upright tube, 63"       | 860025-35  |

Upright mounting brackets included in Cornerstone-WS Frame kit.





# Cornerstone® Accessories

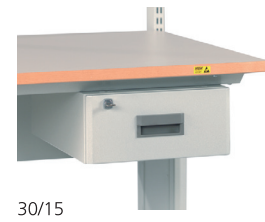
## Drawer Brackets

Drawer Brackets allow for easy adjustment of drawer units from one side of station to the other without the need of removing from workstation.

### Drawer Mounting Bracket Pair

| Size | Order No   |
|------|------------|
| 24"  | E820347-35 |
| 30"  | E820348-35 |
| 36"  | E820349-35 |

Drawer brackets will support third party drawer units.



## Drawer Units

These drawer units are attached under a workstation to provide storage space and include either one or two drawers. The drawer cabinet comes with one drawer and locker with door. The doors and drawers can be locked to protect the contents.

### Drawer units

| name   | size W x D x H inches | max lbs | order No  |
|--|-----------------------|---------|-----------|
| Drawer unit 30/15  | 11.81 x 17.20 x 5.91  | 22      | 859330-35 |
| Drawer unit 30/22  | 11.81 x 17.20 x 8.74  | 44      | 859340-35 |
| Drawer cabinet 35/47   | 13.77 x 17.71 x 18.50 | 55      | 860972-35 |
| Drawer unit 38/26-1  | 14.96 x 20.47 x 10.23 | 132     | 60535001  |
| Internal drawer dimensions: 9.96 x 16.89 x 5.12/3.39 inches. |                       |         |           |

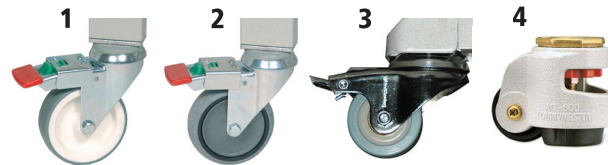
## Casters

### Casters

| Size                       | Order No  |
|----------------------------|-----------|
| 1. Caster Set Ø 3.93"      | 834734-00 |
| 2. Caster Set Ø 3.93" ESD* | 860429-00 |
| 3. Low Profile caster set* | 14-700020 |
| 4. Roll & Set caster set   | 14-700025 |

\* Set includes two locking and two non locking casters.

Cornerstone® workstations can be equipped with any 12mm stem caster.



## Shelves

### Steel Equipment Shelves



### Steel Equipment Shelves

| Size       | Max lbs | Order No   |
|------------|---------|------------|
| M30 x 12"D | 176     | E816757-35 |
| M30 x 16"D | 176     | E816758-35 |
| M36 x 12"D | 176     | E816759-35 |
| M36 x 16"D | 176     | E816760-35 |
| M48 x 12"D | 176     | 854480-35  |
| M48 x 16"D | 176     | 854483-35  |
| M60 x 12"D | 176     | 854481-35  |
| M60 x 16"D | 176     | 854484-35  |
| M72 x 12"D | 176     | 854482-35  |
| M72 x 16"D | 176     | 854485-35  |

### Steel Shelves w/lip, 0° or 20° tilt



### Steel Shelves w/lip, 0° or 20° tilt

| Size       | Max lbs | Order No  |
|------------|---------|-----------|
| M30 x 12"D | 110     | 836028-35 |
| M30 x 16"D | 110     | 852770-35 |
| M36 x 12"D | 110     | 852283-35 |
| M36 x 16"D | 110     | 852769-35 |
| M53 x 12"D | 110     | 860787-35 |
| M53 x 16"D | 110     | 860788-35 |

# Cornerstone® Accessories



## Lower Shelves

Lower shelf can be added to the Cornerstone® workstation, providing storage or packaging materials under the work surface.

### Lower shelves for the Cornerstone® workstation

| name        | W x D inches  | max Lbs | order No   |
|-------------|---------------|---------|------------|
| Lower shelf | 45.94 x 11.81 | 176     | 14-1203576 |
| Lower shelf | 45.94 x 15.74 | 176     | 14-1203579 |
| Lower shelf | 57.75 x 11.81 | 176     | 14-1203577 |
| Lower shelf | 57.75 x 15.74 | 176     | 14-1203580 |
| Lower shelf | 69.80 x 11.81 | 176     | 14-1203578 |
| Lower shelf | 69.80 x 15.74 | 176     | 14-1203581 |

### Lower Packaging shelves for use with tube dividers

| name                      | W x D inches          | max lbs | order No   |
|---------------------------|-----------------------|---------|------------|
| Lower packaging shelf     | 45.94 x 15.74         | 176     | 14-1203587 |
| Lower packaging shelf     | 57.79 x 15.74         | 110     | 14-1253588 |
| Lower packaging shelf     | 69.80 x 15.74         | 110     | 14-1203589 |
| Tube dividers set (4 pcs) | ø .62 x 13.22 x 11.81 |         | 859010-35  |



Optional Tube Dividers for the Packaging Shelf

## Lights/Balancer Rails

### Overhead Lighting

| size inches | description                                  | bulbs | order No   |
|-------------|--|-------|------------|
| 30*         | Overhead light                               | 2     | 14-9503520 |
| 42          | Overhead light                               | 2     | 14-9503522 |
| 54          | Overhead light                               | 2     | 14-9503524 |
| 26          | Overhead light, 2/4 bulb operation, 10° tilt | 4     | 14-9503526 |
| 32          | Overhead light, 2/4 bulb operation, 10° tilt | 4     | 14-9503527 |
| 44          | Overhead light, 2/4 bulb operation, 10° tilt | 4     | 14-9503528 |
| 56          | Overhead light, 2/4 bulb operation, 10° tilt | 4     | 14-9503529 |
| 30*         | LED Light, 2-24" LED Bulbs                   | 2     | 14-9503560 |
| 54          | LED Light, 2-48" LED Bulbs                   | 2     | 14-9503561 |

T8 fluorescent bulbs included in all lights

\*Note: 30" Overhead light must be used with M36 or larger light/balancer rails.

Overhead Light - 2 bulbs



Overhead Light



10° Tilt

LED Light

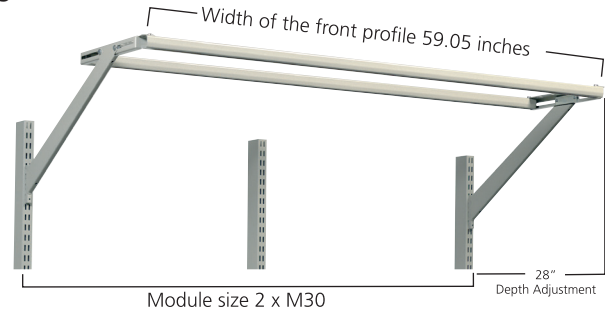


### Light/balancer rail

| module size | width of the front profile inches | max lbs | order No |
|-------------|-----------------------------------|---------|----------|
| 3 x M20     | 59.05                             | 33      | 91835006 |
| 2 x M30     | 59.05                             | 33      | 91835006 |
| 2 x M36     | 70.86                             | 33      | 91835008 |
| M48         | 47.24                             | 33      | 91835010 |
| M53         | 53.14                             | 33      | 91835011 |
| M60         | 59.05                             | 33      | 91835006 |
| M72         | 70.86                             | 33      | 91835008 |

Includes one sliding piece.

### Light/balancer rail



Module size 2 x M30

Depth Adjustment

## Footrests

### Footrests

|                            | Size | order No    |
|----------------------------|------|-------------|
| Footrest, bar Cornerstone™ | M48  | 14-12035182 |
| Footrest, bar Cornerstone™ | M60  | 14-12035183 |
| Footrest, bar Cornerstone™ | M72  | 14-12035184 |







# Cornerstone<sup>®</sup> Accessories

## Power Rails

### Horizontal Power rail

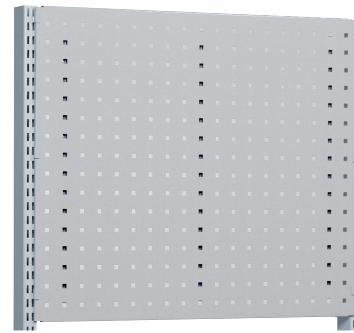
| width                                | order No    |
|--------------------------------------|-------------|
| M30 Bin rail w/6 outlet power        | 14-9113505  |
| M30 Bin rail w/6 outlet power, surge | 14-9113506  |
| M36 Bin rail w/6 outlet power        | 14-9113510  |
| M36 Bin rail w/6 outlet power, surge | 14-9113511  |
| M48 Bin rail w/6 outlet power        | 14-9113515  |
| M48 Bin rail w/6 outlet power, surge | 14-9113516  |
| M53 Bin rail w/6 outlet power        | 14-91135270 |
| M53 Bin rail w/6 outlet power, surge | 14-91135271 |
| M60 Bin rail w/6 outlet power        | 14-9113519  |
| M60 Bin rail w/6 outlet power, surge | 14-9113520  |
| M72 Bin rail w/6 outlet power        | 14-9113523  |
| M72 Bin rail w/6 outlet power, surge | 14-9113524  |



## Perforated Panels

### Perforated back panels

| name                  | module | W x H inches  | order No   |
|-----------------------|--------|---------------|------------|
| Perforated back panel | M30    | 28.26 x 15.31 | 861511-35  |
| Perforated back panel | M30    | 28.97 x 25.19 | 861512-35  |
| Perforated back panel | M30    | 28.97 x 39.48 | 861514-35  |
| Perforated back panel | M30    | 28.26 x 24.13 | 861512-35  |
| Perforated back panel | M36    | 34.29 x 24.13 | 861517-35  |
| Perforated back panel | M36    | 34.29 x 15.31 | 861516-35  |
| Perforated back panel | M48    | 47.25 x 15.35 | E816427-35 |
| Perforated back panel | M53    | 51.88 x 15.35 | 861521-35  |
| Perforated back panel | M60    | 58.03 x 15.35 | 861526-35  |
| Perforated back panel | M72    | 69.84 x 15.35 | 861531-35  |



## Hooks



See pages 30-53 of our full line catalog for our wide range of workstation accessories.



# Cornerstone® Preconfigured Workstations



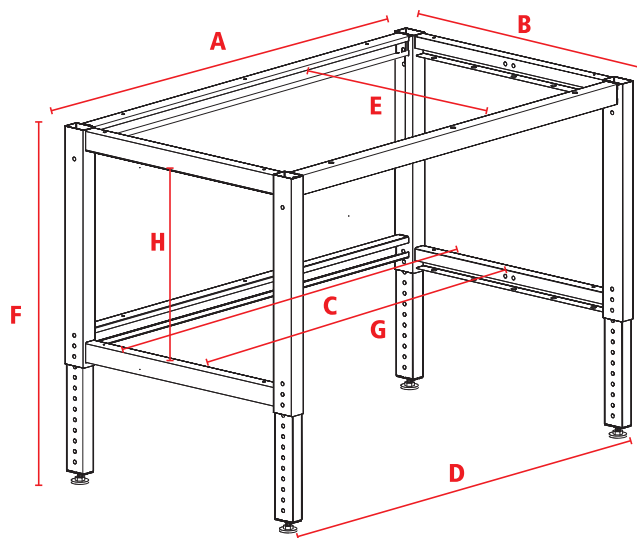
**Cornerstone® Workstation**  
Order No. 14-C12041180



**Cornerstone® Packaging Workstation**  
Order No. 14-C12041179



**Cornerstone® Workstation Bins & Shelves**  
Order No. 14-C12041181



## Cornerstone® Workstation Frame Size Specifications

|          | 24 x 48      | 30 x 48     | 24 x 60     | 30 x 60     | 24 x 72     | 30 x 72     |
|----------|--------------|-------------|-------------|-------------|-------------|-------------|
| <b>A</b> | 45.81"       | 45.81"      | 57.63"      | 57.63"      | 69.44"      | 69.44"      |
| <b>B</b> | 21.78"       | 27.69"      | 21.78"      | 27.69"      | 21.78"      | 27.69"      |
| <b>C</b> | 43.13"       | 43.13"      | 54.94"      | 54.94"      | 66.75"      | 66.75"      |
| <b>D</b> | 44.19"       | 44.19"      | 56"         | 56"         | 67.81"      | 67.81"      |
| <b>E</b> | 18.35"       | 24.25"      | 18.35"      | 24.25"      | 18.35"      | 24.25"      |
| <b>F</b> | 24.75-37.64" | 23.5-36.39" | 23.5-36.39" | 23.5-36.39" | 23.5-36.39" | 23.5-36.39" |
| <b>G</b> | 45.5"        | 45.5"       | 57.31"      | 57.31"      | 69.13"      | 69.13"      |
| <b>H</b> | 20"          | 20"         | 20"         | 20"         | 20"         | 20"         |



Check out Sovella's ALL NEW 3D Design tool to plan out your next workstation! Simply visit Sovella online at [www.sovella.us](http://www.sovella.us).

## CONTACT

### HEAD OFFICE

Treston Group  
Sorakatu 1  
20730 Turku  
Tel. 02 277 9000  
Fax 02 236 1140  
sales@trestongroup.com  
www.trestongroup.com

### FACTORY - FINLAND

Treston Oy  
Sorakatu 1  
20730 Turku  
Tel. 02 277 9000  
Fax 02 236 1140  
sales@trestongroup.com  
www.treston.fi

Sovella Oy  
PL 33  
40351 Jyväskylä  
Tel. 010 4469 11  
Fax 010 4469 290  
sales@trestongroup.com  
www.sovella.fi

### FACTORY - GERMANY

Treston Germany GmbH  
Profile Technology  
Sülkampweg 20  
32278 Kirchleengern  
Tel. +49 5223 18 02 70  
Fax +49 5223 18 02 72  
profiltechnik@trestongroup.com  
www.trestongroup.com

Sovella, Inc. a wholly  
owned subsidiary of

**TRESTON**  
GROUP

### BENELUX

Sovella Human Workspace BV  
Mechelaarstraat 17  
4903 RE Oosterhout  
Tel. +31 162 454 383  
Fax +31 162 434 712  
infoben@humanworkspace.nl  
www.humanworkspace.nl

### CHINA

Treston (Shanghai) Trading Co., Ltd.  
10D, Majesty Building  
No. 138, Pudong Avenue  
Shanghai 200120

Treston:  
Tel. +86 21 5835 2022  
+86 21 5835 2023  
Fax +86 21 6247 1838  
shanghai@treston.com  
www.treston.com.cn

Sovella:  
Tel. +86 21 6247 1808  
+86 21 6247 1828  
Fax +86 21 6247 1838  
saleschina@sovella.com  
www.sovella.cn

### FRANCE

Sovella SARL  
Z.A.C. de la Bonne Rencontre  
1, voie Gallo Romaine, Quincy-Voisins  
77334 Meaux Cedex  
Tel. +33 1 64 17 11 11  
Fax +33 1 64 17 11 10  
infofr@sovella.com  
www.sovella.fr

### GERMANY

Treston Germany GmbH  
Thomas-Mann-Str. 21  
22175 Hamburg  
Tel. +49 40 640 10 05  
Fax +49 40 64015 76  
info.de@trestongroup.com  
www.trestongroup.com

Treston Germany GmbH  
Branch Office  
Frankfurter Straße 101  
65479 Raunheim  
Tel. +49 6142 992 50  
Fax +49 6142 218 75  
mail.de@trestongroup.com  
www.trestongroup.com

### NORWAY

Industrial Furniture AS  
Stålfjæra 1  
0975 Oslo  
Tel. +47 22 25 05 00  
post@industrimobler.no  
www.industrimobler.no

### POLAND

Treston Sp. z o.o.  
Skwer ks. Kard.  
Wyszy skiego 5 lok.32  
01-015 Warszawa  
Tel. +48 22 862 99 55  
Fax +48 22 632 67 01  
info.pl@treston.com  
www.treston.pl  
www.sovella.com

### RUSSIA

Treston Group Russia LLC  
Saint Petersburg  
Tel. +7 812 997 9691  
www.treston.ru  
www.sovella.ru

### SWEDEN

Treston Group AB  
Tumstocksvägen 9 A  
187 66 Täby  
Tel. +46 8 511 791 60  
Fax +46 8 511 797 60  
info.se@treston.com  
www.treston.se

Treston Group AB  
Bultgatan 40  
442 40 Kungälv  
Tel. +46 31 23 33 05  
Fax +46 31 23 33 65  
info.se@treston.com  
www.treston.se

Sovella:  
Tel. +46 8 625 76 80  
info.se@sovella.com  
www.sovella.se

### GREAT BRITAIN

Treston Ltd  
Treston House  
5b Bone Lane, Newbury  
Berkshire, RG14 5SH  
Tel. +44 1635 521521  
Fax +44 1635 37452  
salesuk@treston.com  
info.uk@sovella.com  
www.trestonltd.co.uk  
www.sovella.co.uk

### USA

**Sovella Inc.**  
**156 Bluffs Court**  
**Canton, GA 30114**  
**Tel. +1 770 424 0004**  
**+1 800 437 6772**  
**Fax +1 770 424 8066**  
**infousa@sovella.com**  
**www.sovella.us**

## A long history in brief



Treston Group has a long history of professional furniture design and manufacturing, and more than three decades of experience in workplace development. Design and manufacturing plant located in Finland and Germany.

International sales network for local support and service anywhere in the world. We have offices in Europe, North America and Asia and more than 30 countries reaching a comprehensive network of selected dealers.

CONNECT with **Sovella Inc** on Social Media!



**Sovella**<sup>®</sup>  
WWW.SOVELLA.US