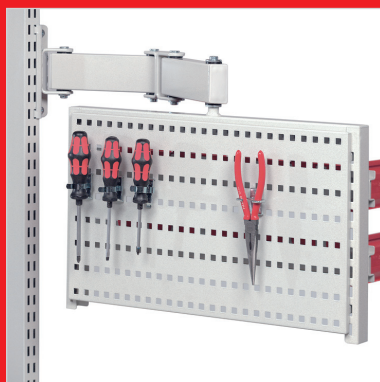


Sovella Concept Workstation Solutions A to Z



DEDICATED TO HUMAN WORKSPACE



Sovella Concept Workstation Solutions... A to Z

Concept™ workstations are designed for the needs of industry, where ergonomics, productivity, and quality are important to the process. The workstation easily adapts to the work process and the needs of the user. As a result, all movements of the user are optimized, which in turn increases performance and productivity while decreasing work related stress. Modular design provides flexibility to adapt to changes in personnel, task or environment. Sovella workstations - providing solutions from A to Z!





A Concept™ adjustable height worktable frames

Sovella Concept™ adjustable frames are available in 3 different height adjustment methods: friction, hand crank, and motorized. All of the frames are powder coated with Sovella's proprietary ESD paint. Adjustable glides allow for fine adjustments. Glides may be replaced by casters where mobility is required.



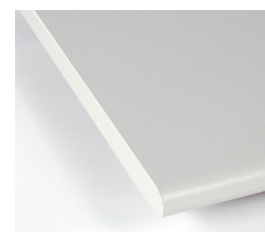
Lower cross bar standard on Motor & crank frame, optional on manual frame

Description	Order No.
30" x 48", Friction adj frame, height adj range 26.37"-44.09", 1100 lbs cap.	10035031
30" x 48", Hand crank adj frame, heights adj range 26.57"-40.35", 440 lbs cap.	10135031
30" x 48", Motorized adj frame, height adj range 27.55"-43.30", 660 lbs cap.	10335131
30" x 60", Friction adj frame, height adj range 26.37"-44.09", 1100 lbs cap.	10035032
30" x 60", Hand crank adj frame, heights adj range 26.57"-40.35", 440 lbs cap.	10135032
30" x 60", Motorized adj frame, height adj range 27.55"-43.30", 660 lbs cap.	10335132
30" x 72", Friction adj frame, height adj range 26.37"-44.09", 1100 lbs cap.	10035033
30" x 72", Hand crank adj frame, heights adj range 26.57"-40.35", 440 lbs cap.	10135033
30" x 72", Motorized adj frame, height adj range 27.55"-43.30", 660 lbs cap.	10335133

For additional sizes, see page 12 in Sovella full line catalog

B Postformed Worksurfaces

The Concept™ postformed work surface is available in non-ESD and ESD laminate.



Description	Order No.
30" x 48", Postformed Worksurface non-ESD	14-9684110
30" x 48", Postformed Worksurface ESD	14-9703510
30" x 60", Postformed Worksurface non-ESD	14-9684111
30" x 60", Postformed Worksurface ESD	14-9703511
30" x 72", Postformed Worksurface non-ESD	14-9684112
30" x 72", Postformed Worksurface ESD	14-9703512

For complete work surface options, see page 13 in Sovella full line catalog

C Slotted upright frames

The Concept™ uprights are the basic element for accessorizing Sovella workstations.



Description	Order No.
M30 x 53.5" height, single bay upright frame, suitable for 48", 60", 72" tables	90035001
M36 x 53.5" height, single bay upright frame, suitable for 48", 60", 72" tables	90035001
2XM30 x 53.5" height double bay upright frame, suitable for 60" & 72" tables	90335001
2XM36 x 53.5" height double bay upright frame, suitable for 72" tables	90435001

For additional upright configurations, see page 31 in Sovella full line catalog

D Concept™ workstation drawers

Description	Order No.
Drawer unit, 1x5", 11" wide, 1 lock	860395-35
Drawer unit, 1x5". 14" wide, 1 lock	860400-35
Drawer unit, 2x5", 11" wide, 1 lock	860060-35
Drawer unit, 2x4.33", 13.78" wide, 1 lock	860054-35
Drawer and cabinet 1x5" drawer and 1x12" cabinet, 14" wide, 1 lock	860972-35
Drawer unit 38, 2x3.94"	60535001
Drawer unit 45/56-1, 1x3.94", 2x7.87"	60635104
Drawer unit 45/56-10, 100% opening, w/o base, 2-3.97" drawers & 11.81" file drawer	60635110
Drawer attachment bracket kit, Concept Motor and TL Advantage	854463-35
Drawer bracket, for friction and hand crank frames (1 required per drawer)	860930-35





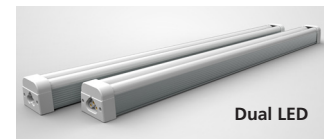
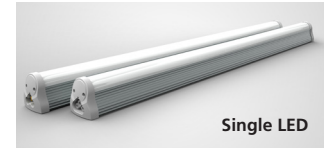
E Light Balancer Rails

Description	Order No.
M30/48 Light/Balancer support rail, front rail 47.24" wide	14-9183502
M30/60 Light/Balancer support rail, front rail 59.05" wide	91835005
M36/48 Light/Balancer support rail, front rail 47.24" wide	14-9183503
M36/60 Light/Balancer support rail, front rail 59.05" wide	91835009
2XM30 Light/Balancer support rail, front rail 59.05" wide	91835006
2XM36 Light/Balancer support rail, front rail 70.86" wide	91835008



F LED Lights

Configuration	Description	Order No.
Single	24" single type LED light fixture, light balancer rail hardware	14-9503595
Single	36" single type LED light fixture, light balancer rail hardware	14-95035102
Single	48" single type LED light fixture, light balancer rail hardware	14-9503596
Dual	24" dual type LED light fixture, light balancer rail hardware	14-9503598
Dual	36" dual type LED light fixture, light balancer rail hardware	14-95035119
Dual	48" dual type LED light fixture, light balancer rail hardware	14-9503599
Single Magnetic	24" single type LED light fixture, with magnetic attachment	14-95035103
Single Magnetic	36" single type LED light fixture, with magnetic attachment	14-95035118
Single Magnetic	48" single type LED light fixture, with magnetic attachment	14-95035121
Dual Magnetic	24" dual type LED light fixture, with magnetic attachment	14-95035100
Dual Magnetic	36" dual type LED light fixture, with magnetic attachment	14-95035120
Dual Magnetic	48" dual type LED light fixture, with magnetic attachment	14-95035101
Hardware	UniFit Universal Light mounting hardware kit (to attach light to other bench mfg)	14-95035110
Hardware	Extension cable, 18" female-to-female	14-95035111
Hardware	Extension cable, 18" male-to-female	14-95035124
Hardware	Magnetic hardware kit for single and dual LED lights	14-94100221
Hardware	28mm Pipe mounting hardware kit	14-94100217



G Steel Shelves

Description	Order No.
M30 x 11.88", steel shelf, 0 to 20 degree angle	92035005
M30 x 15.74", steel shelf, 0 to 20 degree angle	92035006
M36 x 11.88", steel shelf, 0 to 20 degree angle	92035009
M36 x 15.74", steel shelf, 0 to 20 degree angle	92035010



H Rear Justified Adjustable Shelves

Description	Order No.
M30 x 19.88" deep rear justified, with ESD Mat	92035005
M30 x 25.59" deep rear justified, with ESD Mat	92035006
M36 x 19.88" deep rear justified, with ESD Mat	92035009
M36 x 25.59" deep rear justified, with ESD Mat	92035010



Front Justified Adjustable Shelves

Description	Order No.
M30 x 19.88" deep front justified, with ESD Mat	92135005
M30 x 25.59" deep front justified, with ESD Mat	92135006
M36 x 19.88" deep front justified, with ESD Mat	92135009
M36 x 25.59" deep front justified, with ESD Mat	92135010



I Chem Shelf

Description	Order No.
Chem Shelf M30 x 4.5"D x 3.125" H	14-94235610
Chem Shelf M36 x 4.5"D x 3.125" H	14-94035973





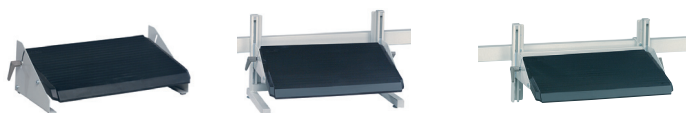
J Bin Rail and Bin Rail Extensions

Description	Order No.
M30 Bin Rail	859151-35
M36 Bin Rail	859152-35
M60 Bin Rail	859154-35
M72 Bin Rail	859155-35
Extension bracket pair for bin rail	860919-35
x2 Extension bracket pair for bin rail (4.72)	14-85935216
x3 Extension bracket pair for bin rail (7.08)	14-85935217
x3 Extension bracket pair for bin rail (9.44)	14-85935218



K Footrests

Description	Order No.
Footrest, floor fixed height	860947-35
Footrest, floor height adjustable	860137-35
Footrest, bar mounted height adjustable	860136-35



L Container with Plastic Bins

Description	Order No.
Container for plastic bins	93135000
Container with 15 plastic bins	93141001
Container with 15 ESD bins	93135001



M Box/Container Stand

Description	Order No.
Box/Container stand with double articulating arm, 22.04"W x 6.88" D x 4.92"H	92835005
Box/Container stand with double articulating arm, 23.62"W x 8.66"D x 4.92"H	92835006



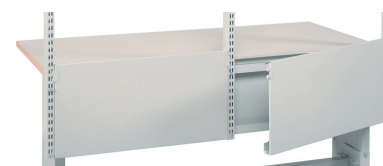
N Adjustable Auxiliary Top

Description	Order No.
Adjustable auxiliary top 22.04" x 13.38", with rubber black mat	92741001
Adjustable auxiliary top 22.04" x 13.38" with ESD mat	92735001
Adjustable auxiliary top 23.81" x 15.94", with rubber black mat	92741002
Adjustable auxiliary top 23.81" x 15.94" with ESD mat	92735002



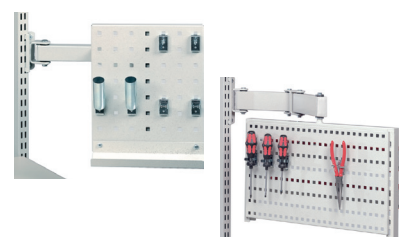
O Cable Duct

Description	Order No.
Cable duct M30	860044-35
Cable duct M36	860045-35



P Tool Plate on Arm & Rotating Tool Plate

Description	Order No.
Tool panel on small double arm 10.51" x 12" with 6 hooks	9283510
Rotating tool frame, with double arm (perforated panel sold separately)	880865-35
Perforated panel for rotating tool frame 18.50" x 11.81"	860951-35
Light bin rail for rotating tool frame 19.37" x 2.12"	860953-35
Tool trough for rotating tool frame 18.50" x 5.90"	860952-35

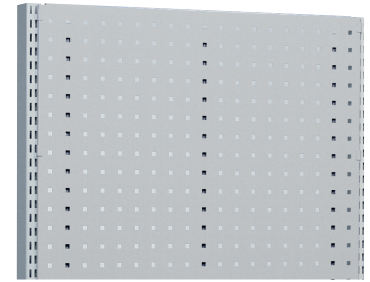




Q Perforated Panels

Description	Order No.
M30 x 15.31" perforated back panel	860258-35
M36 x 15.31" perforated back panel	860259-35
M60 x 15.31" perforated back panel	859009-35
M72 x 15.31" perforated back panel	859004-35

For additional panels and accessories, see pages 86-95 in Sovella full line catalog



R Hooks

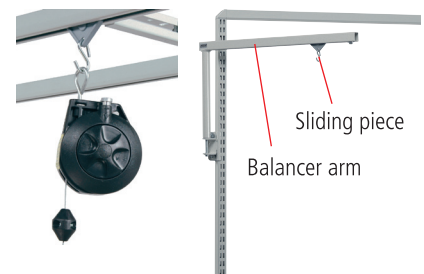
Description	Order No.
Hook Set 1 (basic light hook set)	835110-51
Hook Set 2 (basic hook set for hand tools)	835102-51
Hook Set 3 (hook set for perforated tool cabinet)	834690-51
Hook Set 4 (all inclusive set for hand tools)	834650-51
Hook Set 5 (hook set for heavy tools in perforated tool cabinet)	852705-51

For individual R-hook and Perfo accessories, see pages 86-95 in Sovella full line catalog



S Tool Balancers

Description	Order No.
Tool balancer .5-1.5 lbs capacity	14-9600009
Tool balancer 1.5-3.0 lbs capacity	14-9600010
Tool balancer 3.0-5.0 lbs capacity	14-9600011
Tool balancer 3.0-5/7.0 lbs capacity	14-9600001
Balancer arm 17.6 lbs capacity	846678-35
Trolley sliding piece	940453-00



T Task Chairs

Description	Order No.
Cleanroom stool, with seat tilt, 16.75"-22.75" height adjustment	14-2000060
Polyurethane chair, with seat tilt, 16.75"-22.75" height adjustment	14-2000061
Electric cloth chair, ESD, 16.75"-22.76" height adjustment	14-2000062
Sit stand stool, 25"-34" height adjustment	14-2000063

For optional foot ring and other accessories, see page 45 in Sovella full line catalog



U Multi Trolley

Description	Standard	ESD
Multi Trolley 1, M30	C72141002	C72135002
Multi Trolley 1, M36	C72141003	C72135003
Multi Trolley 2, M30	C72241002	C72235002
Multi Trolley 2, M36	C72241003	C72235003

Includes bottom and front justified shelves with matting



V Plastic Bins

Description	Standard	ESD
9080 Plastic bin, 4.13" x 6.69" x 2.92" rear label	850560-00	850560-18
9075 Plastic bin, 4.13" x 6.69" x 2.92" front label	851623-00	851623-18





W Large Plastic Bins

Description	Standard	ESD
large stacking bins		



X LCD Monitor Arm

Description	Order No.
LCD holder with double arm (for 75mm and 100mm hole pattern)	93035002
Keyboard tray for LCD holder 18.89" x 10.23"	860941-35
Keyboard/Mouse tray for LCD holder 24.40" x 10.23"	860942-35



Y CPU Holders

Description	Order No.
CPU holder, bar clamp 5.90" x 19.68" x 3.34"	860551-35
CPU holder, manual and hand crank foot 7.08"-8.85" x 17.71" x 1.96"	860552-35
CPU holder, motor frame foot 7.08"-8.85" x 17.71" x 1.96"	860740-35
CPU cabinet	861120-35



Z Power Strips

Description	Order No.
Vertical mount 6 outlet power bar with clamp	14-9113528
Vertical mount 6 outlet power bar with clamp and surge protection	14-9113529
Vertical mount 12 outlet power bar with clamp	14-9113530
Vertical mount 12 outlet power bar with clamp and surge protection	14-9113531
M30 bin rail with 6 outlet power bar, 30"	14-9113505
M30 bin rail with 6 outlet power bar and surge protection, 30"	14-9113506
M30 bin rail with 12 outlet power bar, 30"	14-9113507
M30 bin rail with 12 outlet power bar and surge, 30"	14-9113508
M36 bin rail with 6 outlet power bar, 36"	14-9113510
M36 bin rail with 6 outlet power bar and surge protection, 36"	14-9113511
M36 bin rail with 12 outlet power bar, 36"	14-9113512
M36 bin rail with 12 outlet power bar and surge, 36"	14-9113513
M60 bin rail with 6 outlet power bar, 60"	14-9113519
M60 bin rail with 6 outlet power bar and surge protection, 60"	14-9113520
M60 bin rail with 12 outlet power bar, 60"	14-9113521
M60 bin rail with 12 outlet power bar and surge, 60"	14-9113522
M72 bin rail with 6 outlet power bar, 72"	14-9113523
M72 bin rail with 6 outlet power bar and surge protection, 72"	14-9113524
M72 bin rail with 12 outlet power bar, 72"	14-9113525
M72 bin rail with 12 outlet power bar and surge, 72"	14-9113526



CONTACT

Sovella, Inc. a wholly
owned subsidiary of

TRESTON
GROUP

HEAD OFFICE

Treston Group
Sorakatu 1
20730 Turku
Tel. 02 277 9000
Fax 02 236 1140
sales@trestongroup.com
www.trestongroup.com

FACTORY - FINLAND

Treston Oy
Sorakatu 1
20730 Turku
Tel. 02 277 9000
Fax 02 236 1140
sales@trestongroup.com
www.treston.fi

FACTORY - GERMANY

Treston Germany GmbH
Profile Technology
Sülkampweg 20
32278 Kirchleengern
Tel. +49 5223 18 02 70
Fax +49 5223 18 02 72
profiltechnik@trestongroup.com
www.trestongroup.com

BENELUX

Sovella Human Workspace BV
Mechelaarstraat 17
4903 RE Oosterhout
Tel. +31 162 454 383
Fax +31 162 434 712
infoben@humanworkspace.nl
www.humanworkspace.nl

CHINA

Treston (Shanghai) Trading Co., Ltd.
10D, Majesty Building
No. 138, Pudong Avenue
Shanghai 200120

Treston:
Tel. +86 21 5835 2022
+86 21 5835 2023
Fax +86 21 6247 1838
shanghai@treston.com
www.treston.com.cn

Sovella:
Tel. +86 21 6247 1808
+86 21 6247 1828
Fax +86 21 6247 1838
saleschina@sovella.com
www.sovella.cn

FRANCE

Sovella SARL
Z.A.C. de la Bonne Rencontre
1, voie Gallo Romaine, Quincy-Voisins
77334 Meaux Cedex
Tel. +33 1 64 17 11 11
Fax +33 1 64 17 11 10
infofr@sovella.com
www.sovella.fr

GERMANY

Treston Germany GmbH
Thomas-Mann-Str. 21
22175 Hamburg
Tel. +49 40 640 10 05
Fax +49 40 64015 76
info.de@trestongroup.com
www.trestongroup.com

Treston Germany GmbH
Branch Office
Frankfurter Straße 101
65479 Raunheim
Tel. +49 6142 992 50
Fax +49 6142 218 75
mail.de@trestongroup.com
www.trestongroup.com

NORWAY

Industrial Furniture AS
Stålfjæra 1
0975 Oslo
Tel. +47 22 25 05 00
post@industrimobler.no
www.industrimobler.no

POLAND

Treston Sp. z o.o.
Skwer ks. Kard.
Wyszy skiego 5 lok.32
01-015 Warszawa
Tel. +48 22 862 99 55
Fax +48 22 632 67 01
info.pl@treston.com
www.treston.pl
www.sovella.com

RUSSIA

Treston Group Russia LLC
Saint Petersburg
Tel. +7 812 997 9691
www.treston.ru
www.sovella.ru

SWEDEN

Treston Group AB
Tumstocksvägen 9 A
187 66 Täby
Tel. +46 8 511 791 60
Fax +46 8 511 797 60
info.se@treston.com
www.treston.se

Treston Group AB
Bultgatan 40
442 40 Kungälv
Tel. +46 31 23 33 05
Fax +46 31 23 33 65
info.se@treston.com
www.treston.se

Sovella:
Tel. +46 8 625 76 80
info.se@sovella.com
www.sovella.se

GREAT BRITAIN

Treston Ltd
Treston House
5b Bone Lane, Newbury
Berkshire, RG14 5SH
Tel. +44 1635 521521
Fax +44 1635 37452
salesuk@treston.com
infouk@sovella.com
www.trestonltd.co.uk
www.sovella.co.uk

USA

Sovella Inc.
156 Bluffs Court
Canton, GA 30114
Tel. +1 770 424 0004
+1 800 437 6772
Fax +1 770 424 8066
infousa@sovella.com
www.sovella.us

A long history in brief



Treston Group has a long history of professional furniture design and manufacturing, and more than three decades of experience in workplace development. Design and manufacturing plant located in Finland and Germany.

International sales network for local support and service anywhere in the world. We have offices in Europe, North America and Asia and more than 30 countries reaching a comprehensive network of selected dealers.

CONNECT with **Sovella Inc** on Social Media!



Sovella®
WWW.SOVELLA.US

14-99900516 US 11/13
Copyright © 2013 Sovella Inc. All rights reserved.
Specifications are subject to change without prior notice.