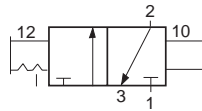


New Product Introduction

Modular L-O-X[®] Manual Lockout Valve (red handle) and Manual Lockout Valve with EEZ-ON[®] Operation (blue handle)

Ports 1/4, 3/8, 1/2, 3/4

Port Size	Valve Model Numbers*	Avg. Cv
L-O-X [®] Valves (red handle)		
1/4	Y1523A2003	5.5
3/8	Y1523A3003	5.5
1/2	Y1523A4003	5.8
3/4	Y1523A5013	5.8
L-O-X [®] Valves with EEZ-ON [®] Operation (blue handle)		
1/4	Y1523A2103	5.5
3/8	Y1523A3103	5.5
1/2	Y1523A4103	5.8
3/4	Y1523A5113	5.8



VALVE OPERATION

MANUAL LOCKOUT VALVE

VALVE CLOSED – When the handle is pushed inward, the flow of supply air is blocked and downstream air is exhausted via the exhaust port. While servicing or maintaining machinery, the L-O-X[®] valve should be padlocked in this position to prevent the handle from being pulled outward inadvertently where potential for human injury exists.

VALVE OPEN – When the handle is pulled outward supply air flows freely from inlet to outlet and flow to exhaust is blocked. A detent keeps the handle in the open position.

MANUAL LOCKOUT VALVE WITH EEZ-ON[®] OPERATION

VALVE CLOSED – With a short push of the blue handle inward, the flow of supply is blocked and downstream air is exhausted via the exhaust port at the bottom of the valve. It is required by OSHA that the L-O-X[®] valve with EEZ-ON[®] operation be padlocked in this position to prevent the handle from being pulled outward inadvertently when potential for human injury exists or servicing machinery.

VALVE OPEN – After the blue handle is pulled out approximately halfway, a restricted flow of air will move downstream. To get full flow, press the small release button while pulling the handle completely.

GENERAL: Manual L-O-X[®] is a high flow Energy Isolation valve in a compact space saving design. Full flow, threaded exhaust meets all the applicable standards.

FEATURES:

- Inline or Modular mounting for easy servicing
- Easily incorporated into Modular Air Entry Packages
- Pressure sensing port allows installation of Pop Up Indicator to verify pressure is released
- Only lockable in the off position
- Has a full size exhaust port (equal to or larger than supply)
- Easy to operate (positive push/pull operation-detented)

APPLICATIONS: Packaging • Conveyor panels
• Material handling • All Air Entry points

STANDARD SPECIFICATIONS

Ambient/Media Temperature: 40° to 175°F (4° to 79°C).

Body: Zinc.

Color: Yellow body, red or blue slide handle.

Fluid Media: Compressed air.

Inlet Pressure: 200 Psig (13.8 bar) maximum.

Ports: Tapped inlet, outlet and exhaust ports.

Seals/Elastomers: Carboxylated Nitrile (XNBR).

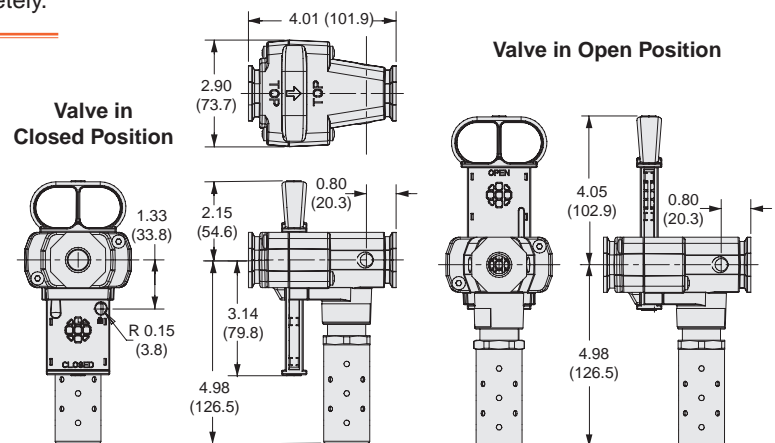
Slide Handle: Acetal.

Lock Hole Diameter: 0.260 inch (6.6 mm).

Lockout Accepts Maximum Padlock Shackle Diameter: 0.260 inch (6.6 mm).

Maximum Hasp Lockout Diameter: 0.260 inch (7.3 mm).

Threads: NPT. For BSPP threads, add a "D" prefix to the model number, e.g., YD1523A2003.



Note: For Air Entry Combinations with Modular L-O-X[®] mounted upstream, ROSS recommends the use of a Reverse Flow Regulator.

Referenced Standards:

All standards are subject to revision. Parties are encouraged to investigate and apply the most recent editions of the standards indicated on the right.

OSHA 29 CFR 1910.147

CSA Z142-02

CSA Z460-05

ISO 13849-1

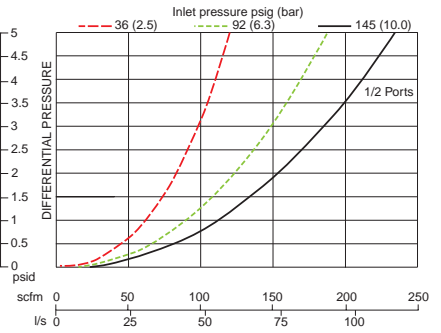
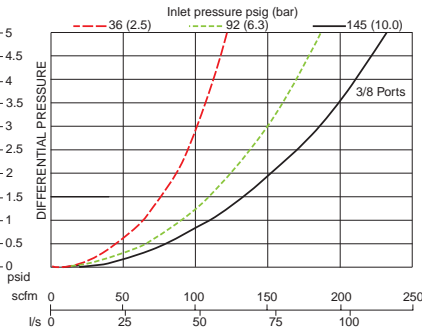
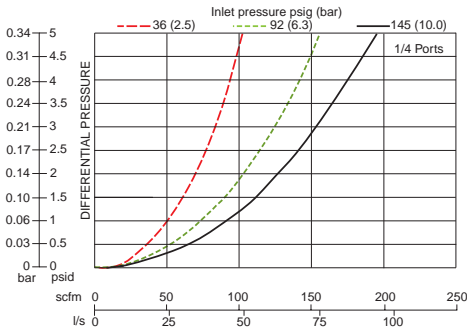
ISO 14118:2000

EN 1037

ANSI/ASSE Z244.1- 2003 (R2010)

ANSI/PMMI B155.1- 2010

LOCKOUT VALVE FLOW CHARACTERISTICS

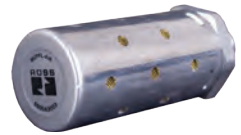
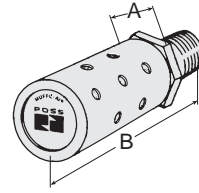


ACCESSORIES

MUFFL-AIR® Silencer

Port Size	NPT Threads	Model Number	Avg. Dimensions inches (mm)	Weight lb (kg)
			C_v A B	
3/4	Male	5500A5013	7.01.3 (32) 3.8 (96)	0.5 (0.2)

* NPT port threads. For BSPP threads, add the letter "D" in front of the part number.
Pressure Range: 150 psig (10.3 bar) maximum.



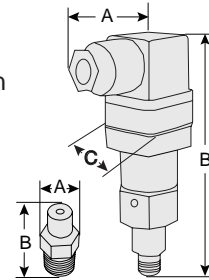
MUFFL-AIR® Silencer

Visual Pop-Up Indicator or Pressure Switch (electrical)

- May be installed on all L-O-X® valves and manual L-O-X® valves with EEZ-ON® operation with pressure sensing port
- Provides a means to verify the release of downstream pressure to next obstruction

Model Number	Inlet Port Size*	Verification Option	Dimensions inches (mm)			Weight lb (kg)
			A	B	C	
988A30	1/8	Pop-Up Indicator	0.55 (14)	0.98 (25)	—	0.03 (0.01)
586A86	1/8	Pressure Switch	2.01 (51)	4.3 (110)	1.22 (31)	0.28 (0.12)

* NPT port threads.

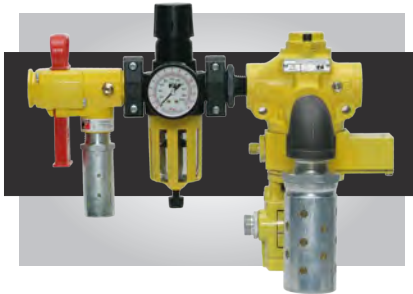


Pop-Up Indicator
Pressure Switch

MODULAR L-O-X® AIR ENTRY PACKAGES EXAMPLES



Modular L-O-X® and SV27 Sensing Valve



Modular L-O-X® and DM¹ Series E



Modular L-O-X® and DM² Series E



For more information on Air Entry Packages, visit the Safety Industry page at www.rosscontrols.com.

WARRANTY and CAUTIONS Standard ROSS warranty and cautions apply, available upon request or at www.rosscontrols.com.



Consider it **DONE!**



ROSS CONTROLS U.S.A.
 Customer Svs. 1-800-GET-ROSS
 Technical Svs. 1-888-TEK-ROSS
www.rosscontrols.com

ROSS CONTROLS INDIA Pvt. Ltd.
 India
 Fax: 91-44-2625-8730
rossindia@airtelmail.in

ROSS EUROPA GmbH
 Germany
 Fax: 49-6103-74694
info@rosseuropa.com

ROSS SOUTH AMERICA Ltda.
 Brazil
 Fax: 55-11-4335-3888
vendas@ross-sulamerica.com.br

ROSS ASIA K.K.
 Japan
 Fax: 81-427-78-7256
custsvc@rossasia.co.jp

DIMAFLUID s.a.s.
 France
 Fax: 33-01-4945-6530
dimafluid@dimafluid.com

ROSS UK Ltd.
 United Kingdom
 Fax: 44-121-559-5309
sales@rossuk.co.uk

ROSS CONTROLS (CHINA) Ltd.
 China
 Fax: 86-21-6915-7960
rosscontrolschina.com