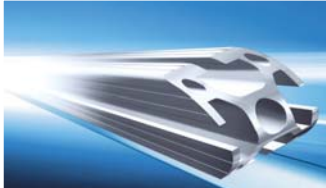




» The Dust Protection System

English

 MayTec®



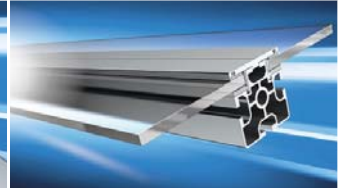
The Profile System



Curved profiles



The Clean-Room System



Glass Panel Profiles



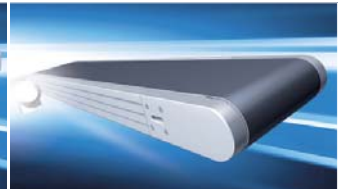
The Tube Clamping System



The Telescopic System



The Linear System



The Conveyor System



The Personnel Transfer System



The Skid Transfer System



Safety Barriers



The Dust Protection System

powered by

MayCAD
Design Software

The ideal profile system

MayTec offers a comprehensive, harmonised profile system. All profiles can be combined in any way conceivable.

The accessories provide functional and aesthetic solutions for a wide range of applications.

Applications

- machine bases
- machine enclosures
- machine guarding
- work stations

Service

The MayTec service is as versatile as the MayTec profile system.

You may choose:

- delivery of standard elements ex-factory
- delivery of profiles and accessories cut to size according to parts list for customer's assembly
- delivery of pre-fitted modular components
- delivery of completely assembled units
- assembly at your premises

- assembly and inspection stations
- transfer and supply trolleys
- partitions and protective walls
- protective and work cabins

Implementation

The MayTec profile system is easy to process and quick to assemble. Its flexible and modular construction means it can be easily modified and is reusable at any time.

An experienced team will support you in implementing the MayTec system, tailored to your individual applications, taking into consideration your dimensions, loading capacity and stability.

- special shelves
- plant equipment
- display systems
- exhibition cabinets and stands

Dust protection for automotive paint shops

Advantages for paint shops

1. Improvement of the air quality to class F9
2. Increase of the "first run" rate
3. Reduction of rework due to dust
4. Reduction of cleaning time
5. Increase worker safety



Daimler project Ludwigsfelde paint shop model "Sprinter" - NCV3

Enclosure of materials handling
over 3 production floors

Enclosed floor space	4,200 m ²
Length of wall section	1,300 m
Glass area	4,600 m ²



Porsche project Zuffenhausen paint shop model "Porsche 911"

Enclosure of materials handling
over 4 production floors

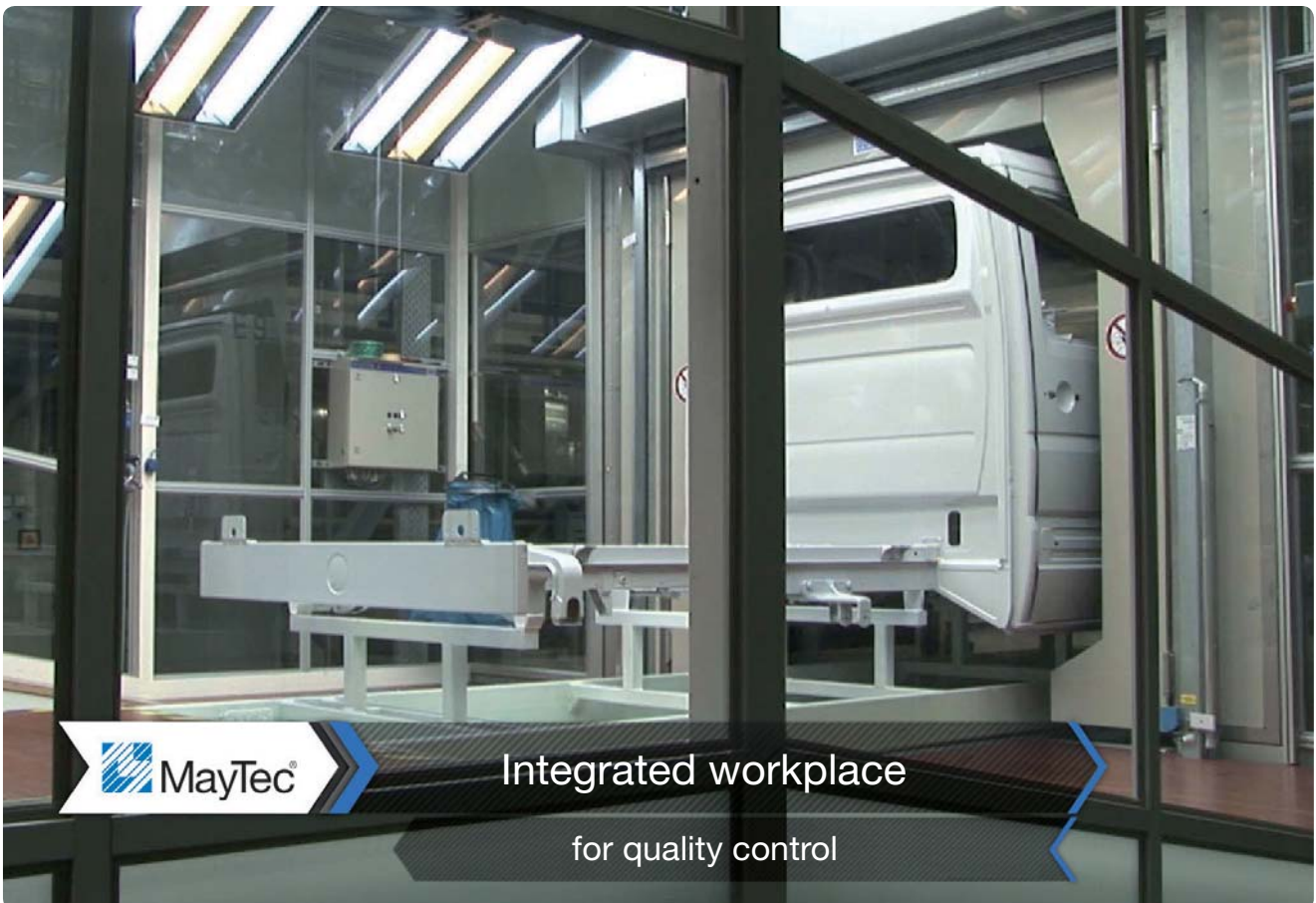
Enclosed floor space	4,800 m ²
Length of wall section	1,750 m
Glass area	5,100 m ²



Porsche project Leipzig paint shop model "Porsche Macan"

Enclosure of materials handling
over 4 production floors

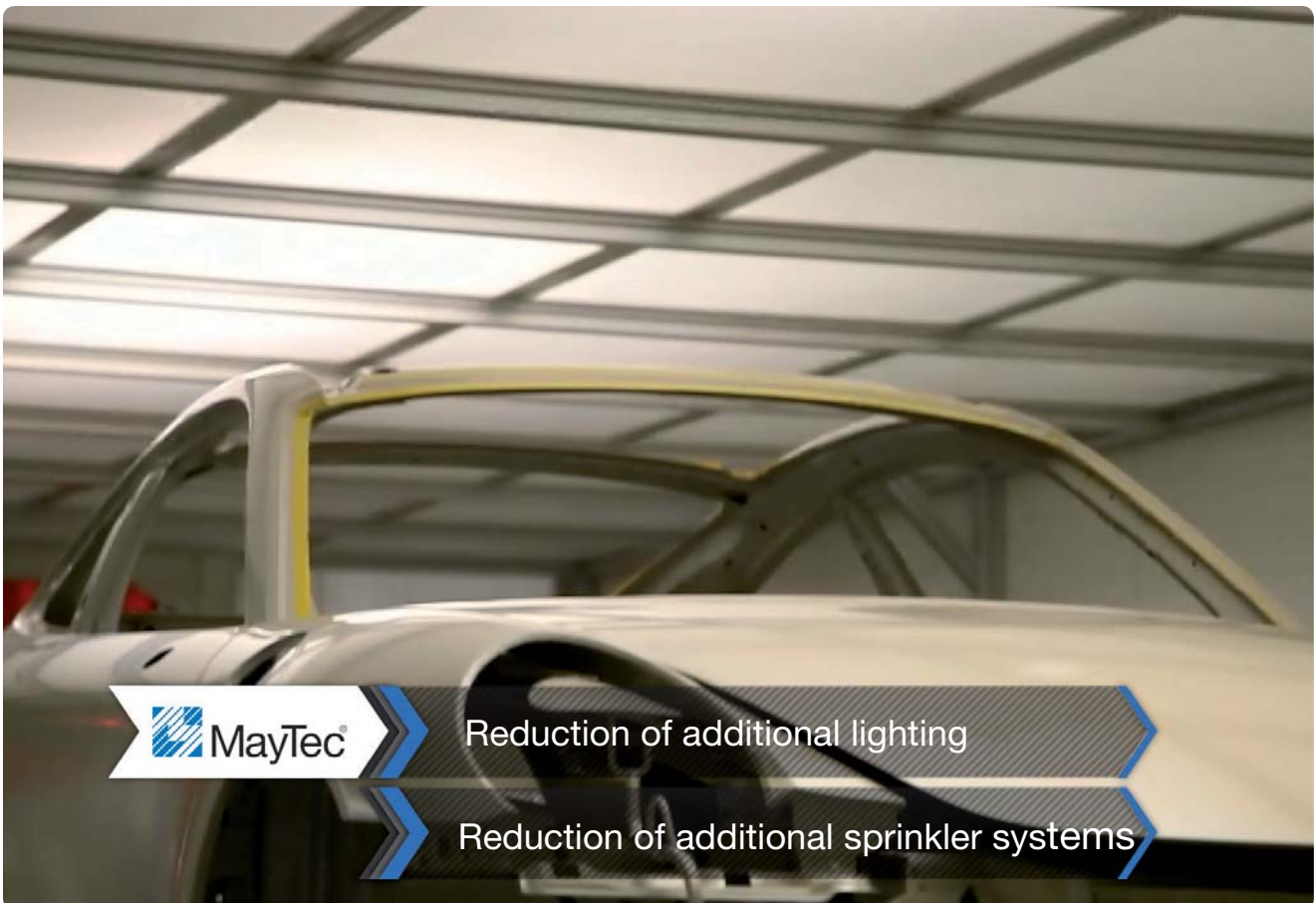
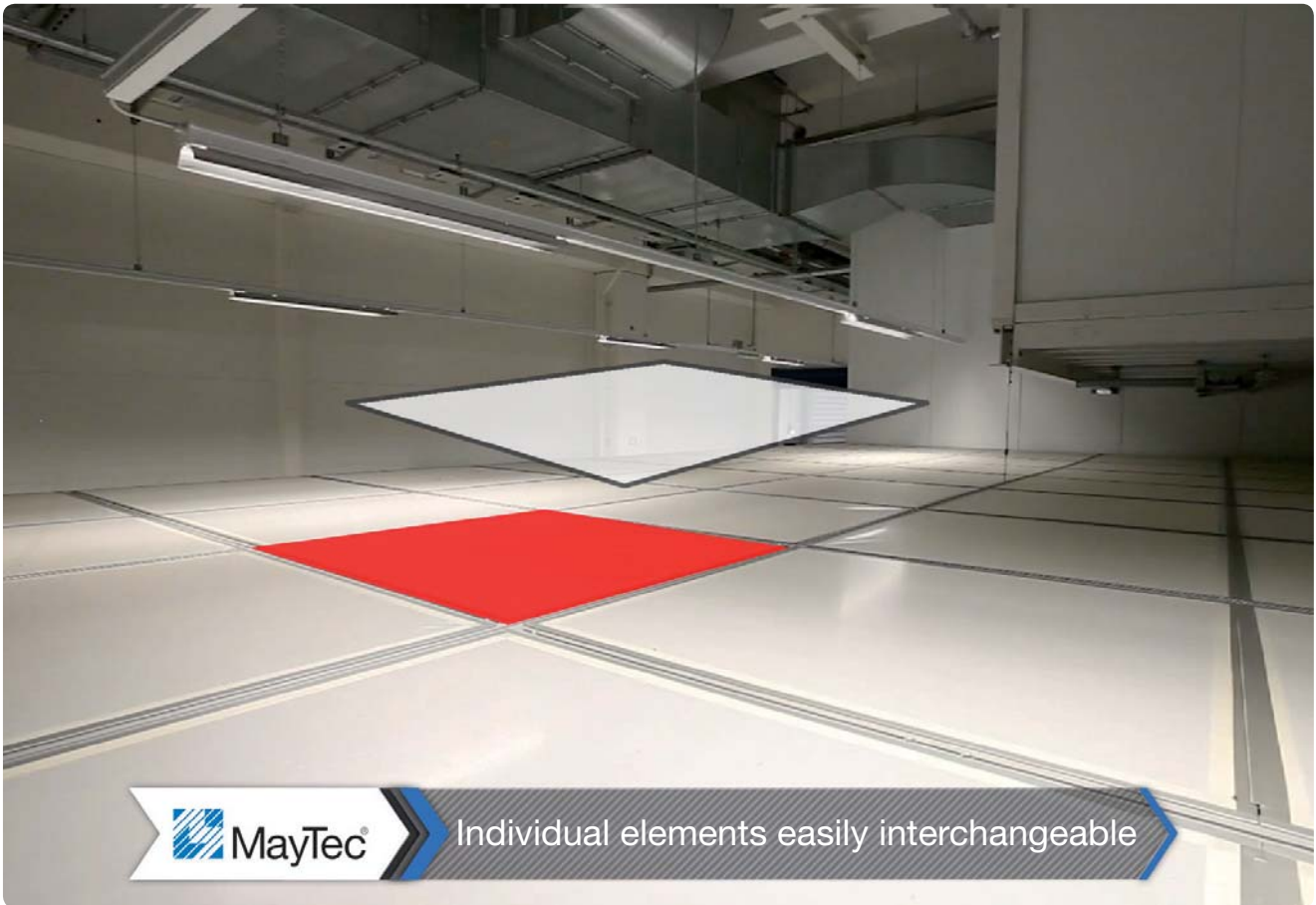
Enclosed floor space	16,000 m ²
Length of wall section	2,100 m
Glass area	7,500 m ²





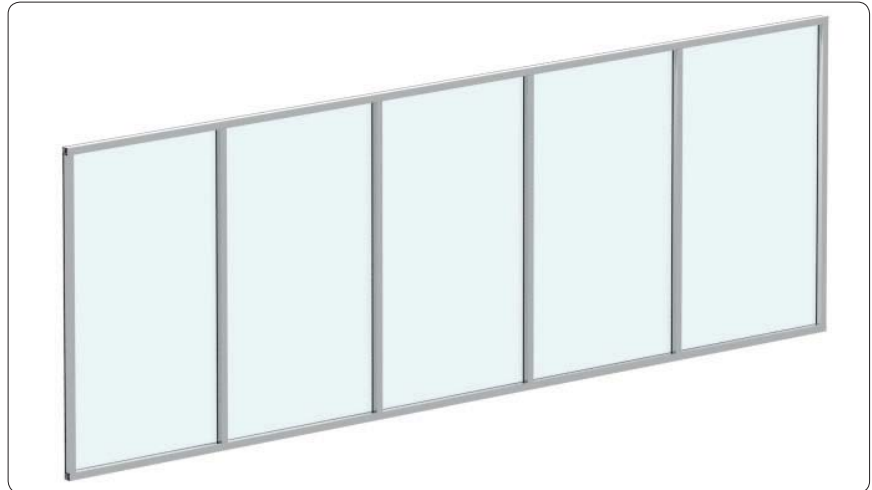






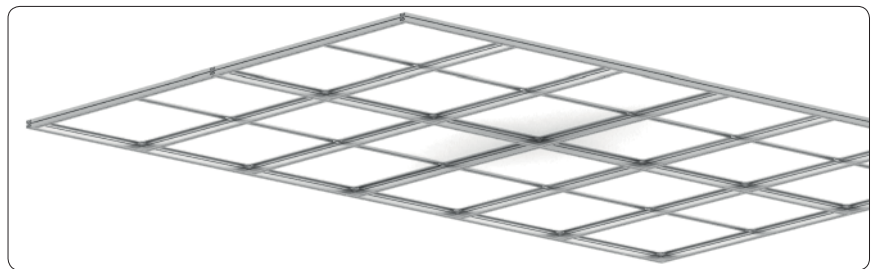
Wall element

Aluminium frame to suit glass panels with thickness of 6, 8 or 10 mm



Ceiling element

Aluminium frame with B1 foil, to reduce additional lighting and sprinkler systems



Doors

Glass doors with standard locking system or safety doors with access control



Door with standard locking system



Safety door with access control

Filtration unit

Ventilation system with F7 (pre-filter) and F9 (main filter)



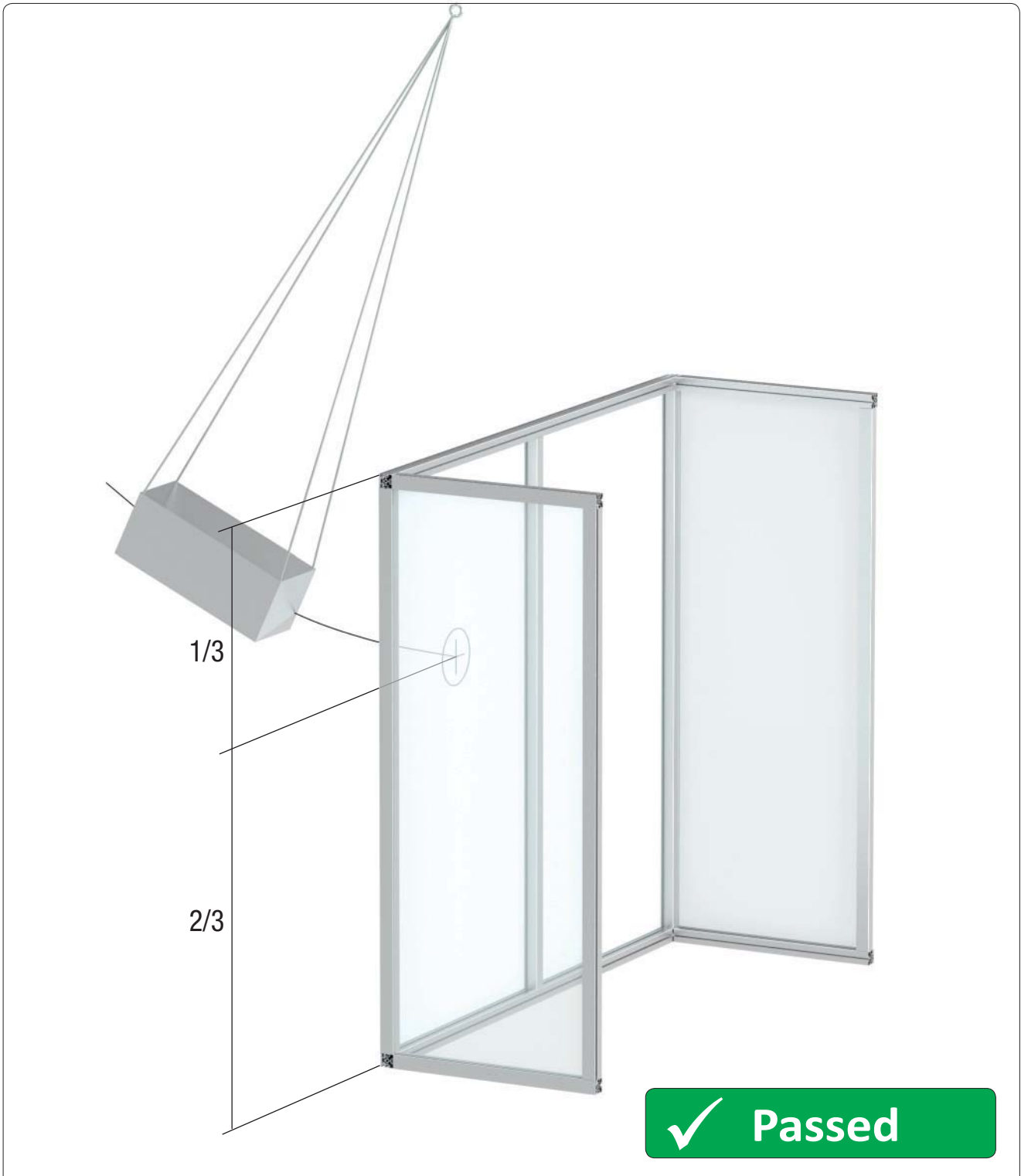
Filtration unit



Control terminal (HMI)

Control terminal (HMI)

for access control and monitoring filter system



Test environment

Frame: MayTec Glass Panel Profiles

Panel element: ESG single layer safety glass - 8 mm

Test conditions

Test load **100** kg

Impact speed **20** km/h

Impact energy **1,600** Joule



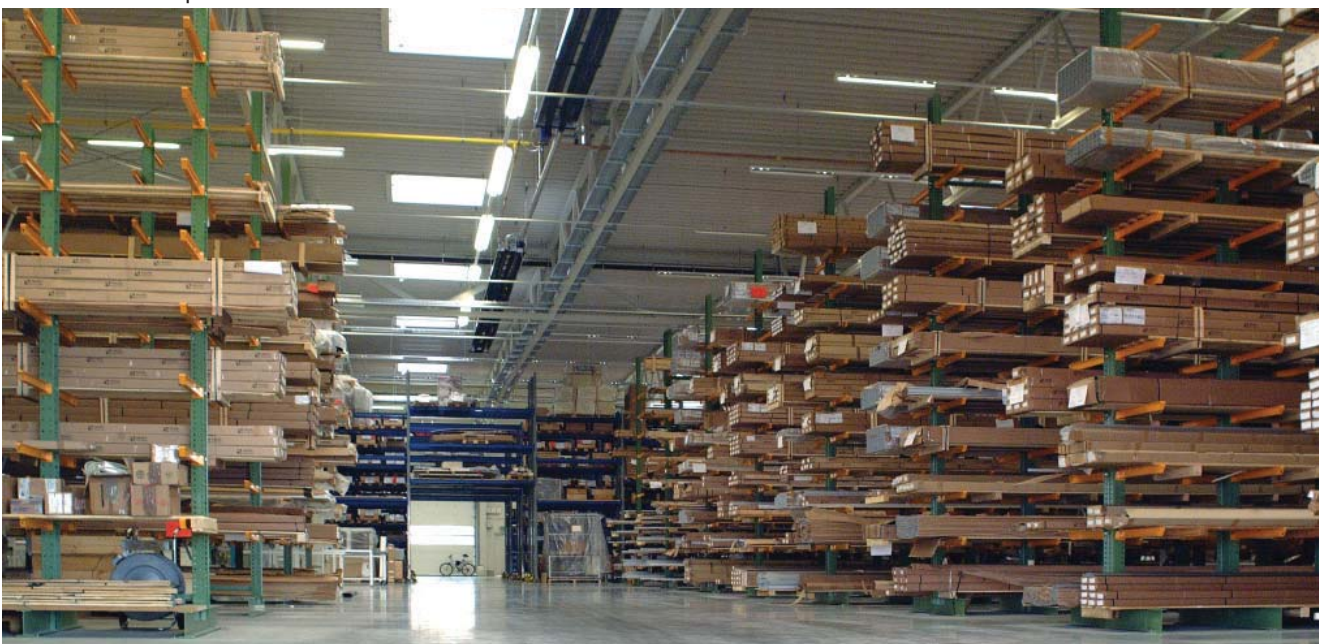
MayTec GmbH plant in Dachau



Small parts storage



Stock of aluminium profiles



The key ...

to success

extremely strong

efficient

functional

Australia

MayTec Australia P/L

Unit 8, 175 James Ruse Drive
Rosehill, NSW 2142

country code: +61
phone (0)2/98989929
fax (0)2/96384086
e-mail: info@maytec.com.au
<http://www.maytec.com.au>

Germany

MayTec Aluminium
Systemtechnik GmbH
Kopernikusstraße 20
D-85221 Dachau

country code: +49
phone (0)8131/3336-0
fax (0)8131/3336-119
e-mail: mail@maytec.de
<http://www.maytec.de>

USA

MayTec Inc.

901 Wesemann Drive
West Dundee, IL 60118

country code: +1
phone 847-429-0321
fax 847-429-0460
e-mail: mail@maytecinc.com
<http://www.maytecinc.com>

MayTec distributor