

AGMS Series
AGS Series
AGT Series

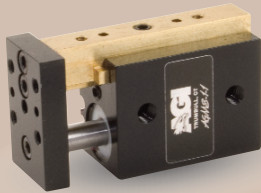
S
l
i
d
e
s





AGMS-1-1 Mini Powered Slide

Built-In Air Cylinder



FEATURES AND BENEFITS

- T-Slot bearing support for the carriage and end plate offers superior load bearing performance throughout the stroke.
- Standard built-in stroke adjustment and stroke lock for precise, repetitive operation.
- Compact, lightweight unit with built-in cylinder.
- Piston seals are U-CUP type for long service life.
- Hall Effect sensors are available to monitor stroke position.
- Multiple mounting surfaces on the body and endplate with threaded and counterbored holes for easy mounting choices.

SPECIFICATIONS

Design: Built-in air cylinder
T-slot slide

Stroke: .5 in adj [12.7 mm]

Thrust Force @ 80 PSI [5.5 BAR]

Extended: 15 lbs [66.7 N]
Retract: 13 lbs [57.8 N]

Recommended Speed:

2-12 in/sec
[0.5-.3m/sec]

Pressure Range:

Low/High 20-120 PSI [1.4-8 BAR]

Temperature Range:

Low/High -20°/150°F [-28°/80°C]

Side Play:

± 0.001 [0.03 mm]

Maximum Payload:

3 lbs [1.3 kg]

Material: High Strength, Aluminum Alloys, Bronze

Weight:

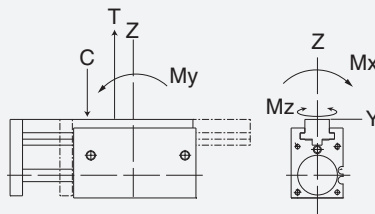
2.5 oz [70.1 g]

Piston Diameter:

.50 in [12.7 mm]

January 2009 - PATENTED Made in the USA

MAXIMUM FORCES & MOMENTS



	Static	Dynamic
Max Tensile T	50 lbs [222 N]	20 lbs [89 N]
Max Compressive C	50 lbs [222 N]	20 lbs [89 N]
Max Moment M_x	25 in/lb [2.8 Nm]	15 in/lb [1.7Nm]
Max Moment M_y	30 in/lb [3.4 Nm]	15 in/lb [1.7Nm]
Max Moment M_z	30 in/lb [3.4 Nm]	15 in/lb [1.7Nm]

HOW TO ORDER

When ordering, please specify:
Design/Model Number and Options.

DESIGN/MODEL

- AGMS-1-1
- AGMS-1-2
- AGMS-1-3
- AGMS-1-4

TYPE

M = METRIC
= IMPERIAL

SENSOR TYPE

- 1 = NPN
- 2 = PNP

AGMS-1-1 M - 3 - 1 - 1

SENSOR OPTIONS*

- 1 = LEFT
- 2 = RIGHT
- 3 = BOTH

SENSOR CONNECTOR

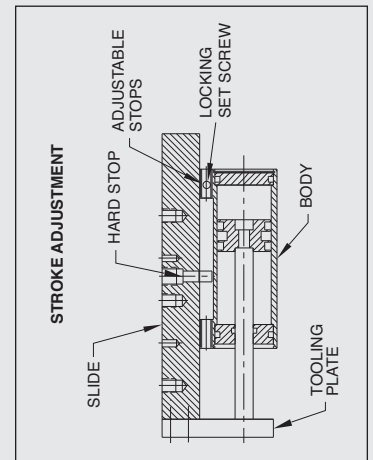
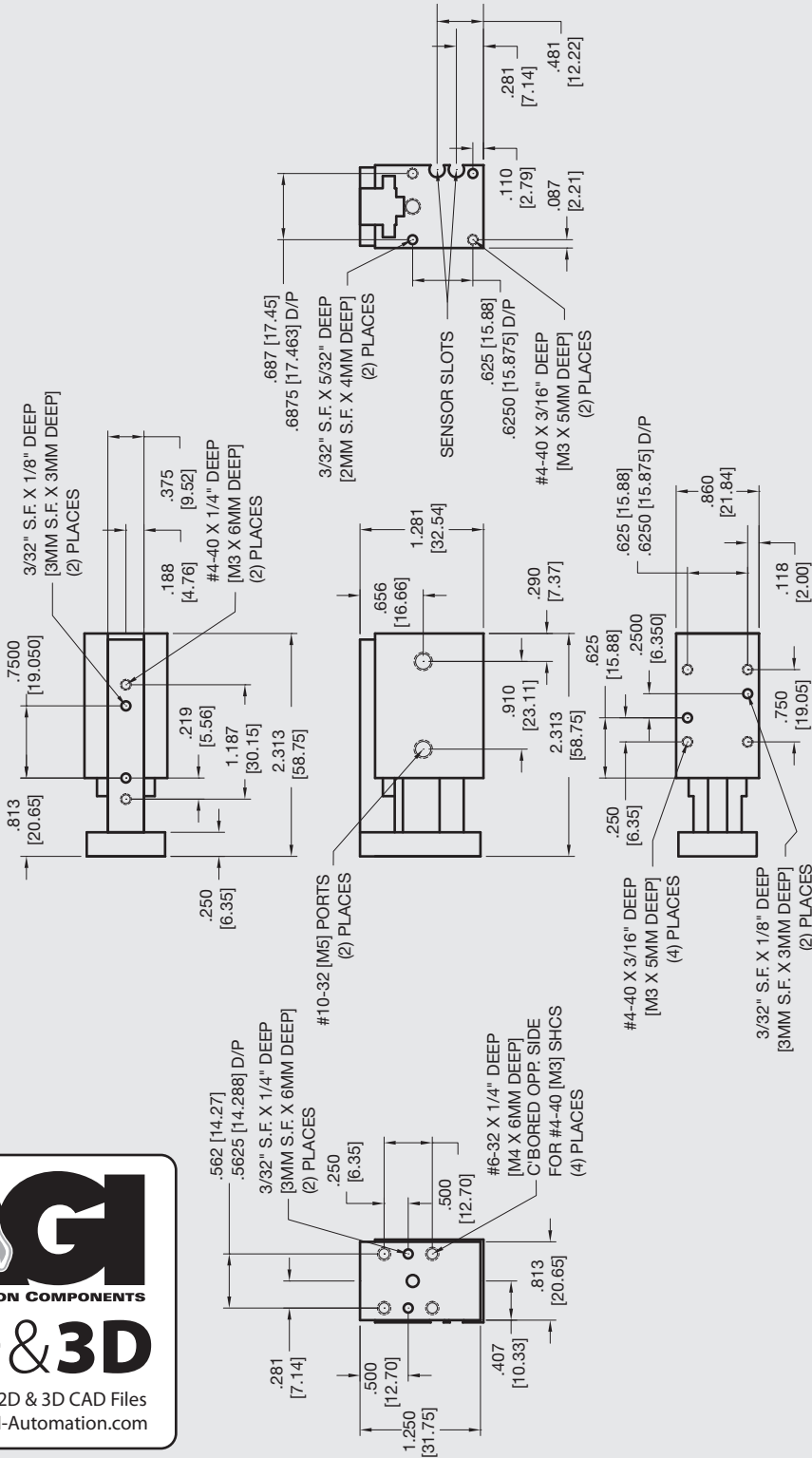
- 1 = POTTED
- 2 = QUICK DISCONNECT
- 3 = QUICK DISCONNECT WITH RIGHT ANGLE

* NOTE: Hall Effect sensors – Potted or Quick disconnect.

Sensor Part # SHN01, SHP01, SHNQ3, SHPQ3

AGMS-1-1 Mini Powered Slide

Built-In Air Cylinder




AGI
AUTOMATION COMPONENTS
2D & 3D
Download 2D & 3D CAD Files
@ www.AGI-Automation.com

Unless noted, all tolerances are as indicated here:



All Dowel Holes are SF (Slip Fit) Locational Tolerance ± .0005" [0.13mm]



Metric Threads Course Pitch

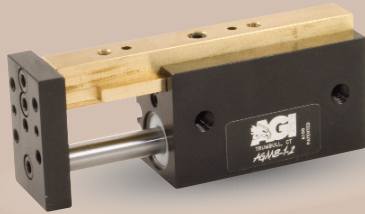
Imperial:
Inch 0.00 = ±.01
0.000 = ±.005
0.0000 = ±.0005

Metric: [0.] = ±.25
[0.0] = ±.13
[0.00] = ±.013



AGMS-1-2 Mini Powered Slide

Built-In Air Cylinder



FEATURES AND BENEFITS

- T-Slot bearing support for the carriage and end plate offers superior load bearing performance throughout the stroke.
- Standard built-in stroke adjustment and stroke lock for precise, repetitive operation.
- Compact, lightweight unit with built-in cylinder.
- Piston seals are U-CUP type for long service life.
- Hall Effect sensors are available to monitor stroke position.
- Multiple mounting surfaces on the body and endplate with threaded and counterbored holes for easy mounting choices.

SPECIFICATIONS

Design: Built-in air cylinder
T-slot slide

Stroke: 1 inch [25.4 mm]

Thrust Force @ 80 PSI [5.5 BAR]

Extended: 15 lbs [66.7 N]
Retract: 13 lbs [57.8 N]

Recommended Speed: 2-12 in/sec [0.5-.3m/sec]

Pressure Range: Low/High 20-120 PSI [1.4-8 BAR]

Temperature Range: Low/High -20°/150°F [-28°/80°C]

Side Play: ± 0.001 [.03 mm]

Maximum Payload: 7 lbs [3.2 kg]

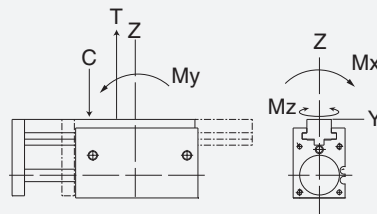
Material: High Strength, Aluminum Alloys, Bronze

Weight: 3.2 oz [90 g]

Piston Diameter: .50 in [12.7 mm]

January 2009 - PATENTED Made in the USA

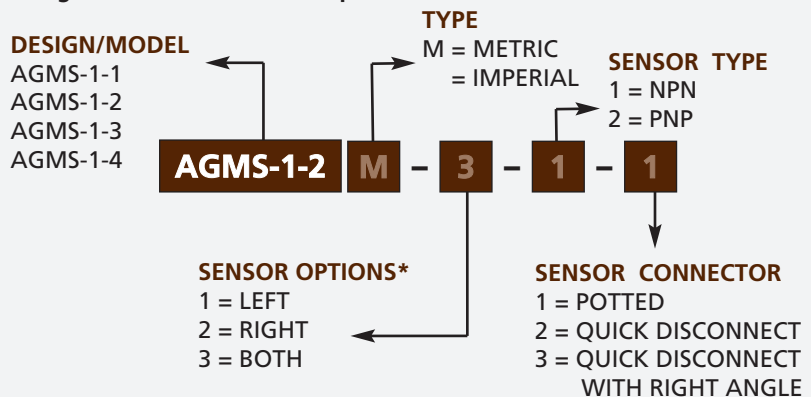
MAXIMUM FORCES & MOMENTS



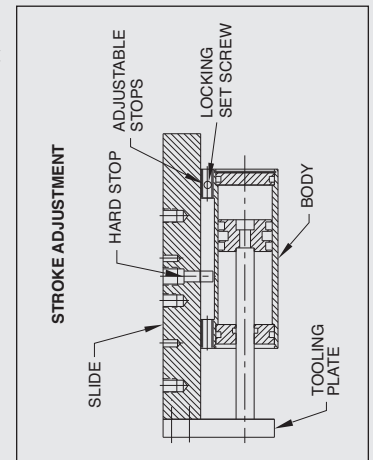
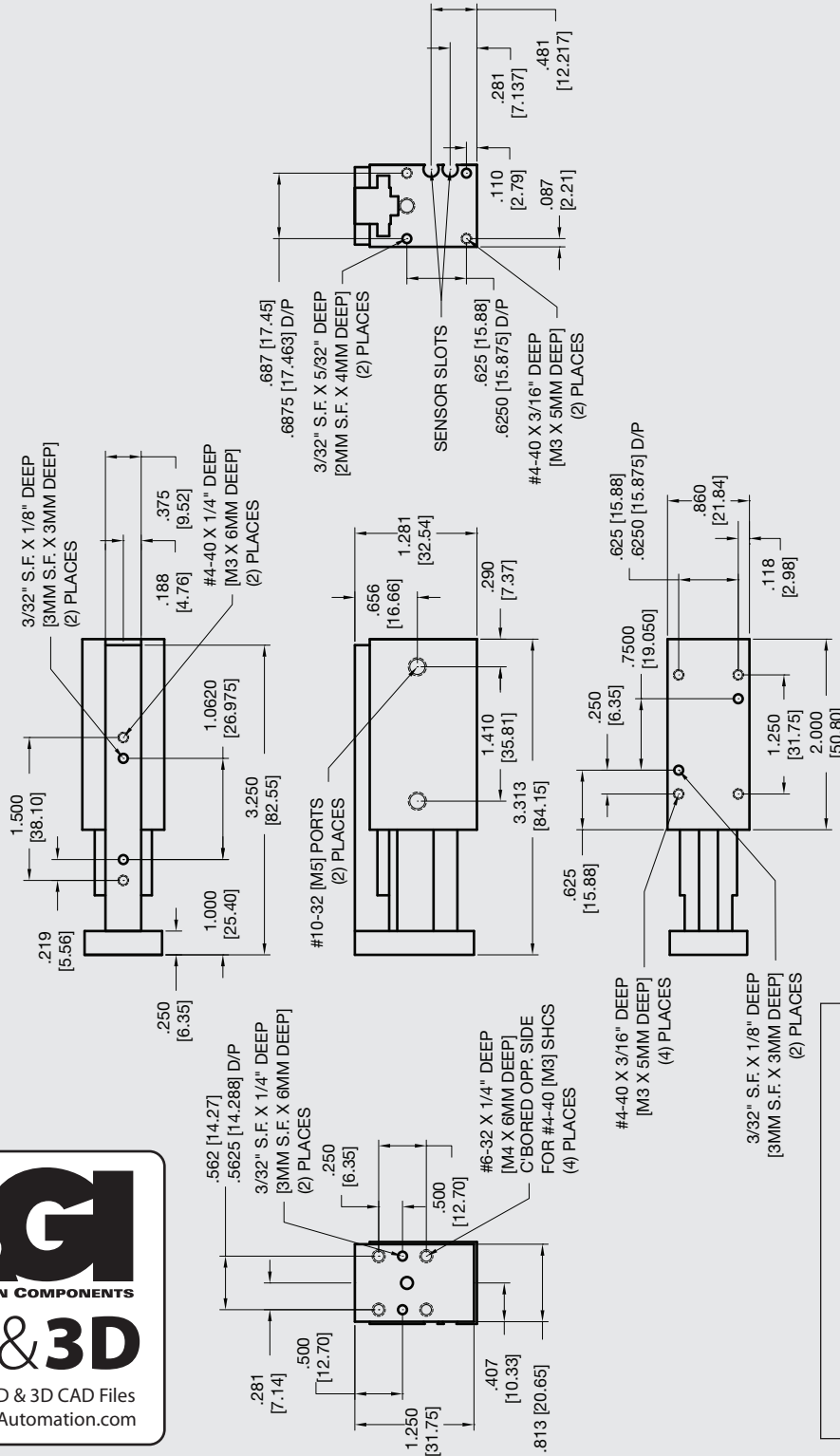
	Static	Dynamic
Max Tensile T	75 lbs [333 N]	32 lbs [142 N]
Max Compressive C	75 lbs [333 N]	32 lbs [142 N]
Max Moment M_x	60 in/lb [6.7 Nm]	30 in/lb [3.4 Nm]
Max Moment M_y	60 in/lb [6.7 Nm]	30 in/lb [3.4 Nm]
Max Moment M_z	60 in/lb [6.7 Nm]	30 in/lb [3.4 Nm]

HOW TO ORDER

When ordering, please specify:
Design/Model Number and Options.



* NOTE: Hall Effect sensors – Potted or Quick disconnect.
Sensor Part # SHN01, SHP01, SHNQ3, SHPQ3



Unless noted, all tolerances are as indicated here:



All Dowel Holes are SF (Slip Fit) Locational Tolerance ± .0005" [0.13mm]



Metric Threads Course Pitch

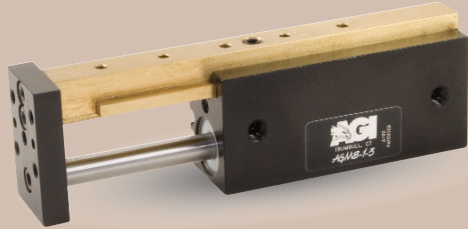
Imperial:
Inch 0.00 = ±.01
0.000 = ±.005
0.0000 = ±.0005

Metric: [0.] = ±.25
[0.0] = ±.13
[0.00] = ±.013



AGMS-1-3 Mini Powered Slide

Built-In Air Cylinder



FEATURES AND BENEFITS

- T-Slot bearing support for the carriage and end plate offers superior load bearing performance throughout the stroke.
- Standard built-in stroke adjustment and stroke lock for precise, repetitive operation.
- Compact, lightweight unit with built-in cylinder.
- Piston seals are U-CUP type for long service life.
- Hall Effect sensors are available to monitor stroke position.
- Multiple mounting surfaces on the body and endplate with threaded and counterbored holes for easy mounting choices.

SPECIFICATIONS

Design: Built-in air cylinder
T-slot slide

Stroke: 1.5 in [38.1 mm]

Thrust Force @ 80 PSI [5.5 BAR]

Extended: 15 lbs [66.7 N]
Retract: 13 lbs [57.8 N]

Recommended Speed: 2-12 in/sec [0.5-.3m/sec]

Pressure Range: Low/High 20-120 PSI [1.4-8 BAR]

Temperature Range: Low/High -20°/150°F [-28°/80°C]

Side Play: ± 0.001 [0.03 mm]

Maximum Payload: 12 lbs [5.4 kg]

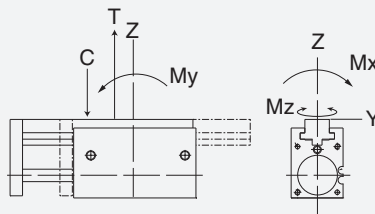
Material: High Strength, Aluminum Alloys, Bronze

Weight: 4 oz [113 g]

Piston Diameter: .50 in [12.7 mm]

January 2009 - PATENTED Made in the USA

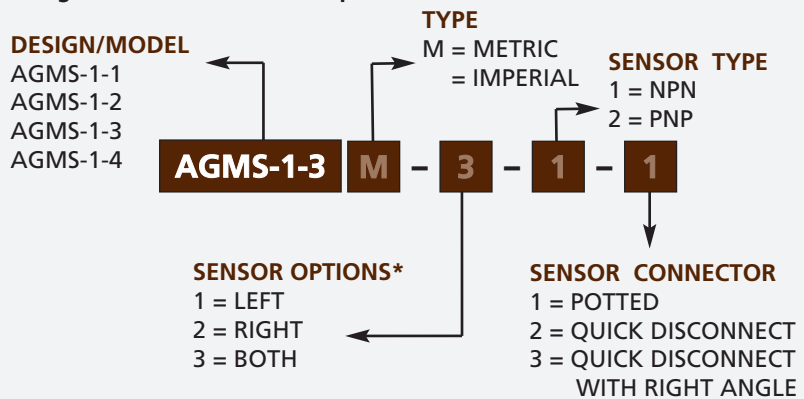
MAXIMUM FORCES & MOMENTS



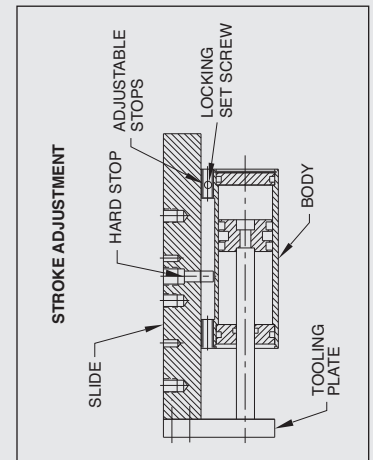
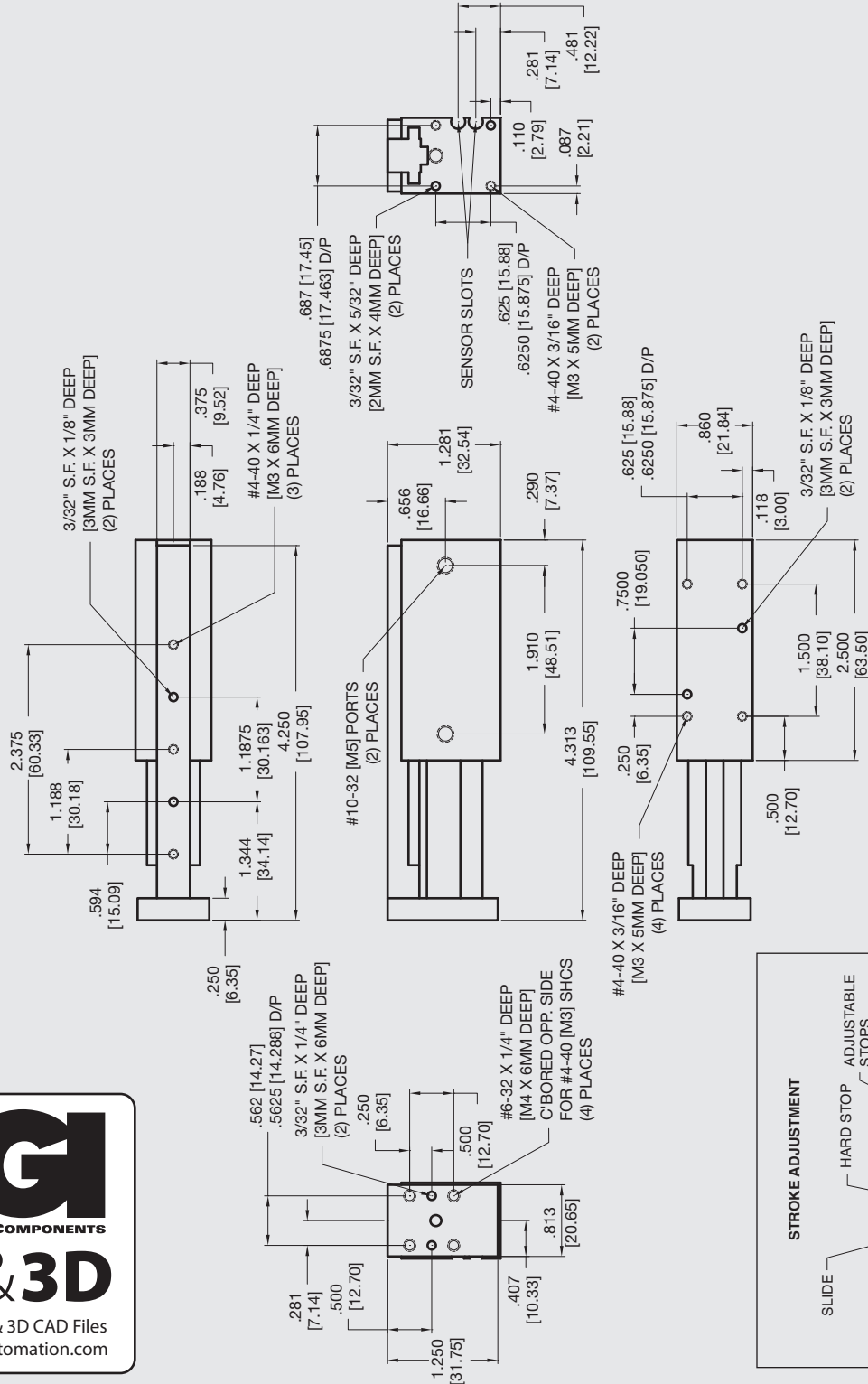
	Static	Dynamic
Max Tensile T	100 lbs [444 N]	42 lbs [186 N]
Max Compressive C	100 lbs [444 N]	42 lbs [186 N]
Max Moment M_x	80 in/lb [9 Nm]	40 in/lb [4.5 Nm]
Max Moment M_y	80 in/lb [9 Nm]	40 in/lb [4.5 Nm]
Max Moment M_z	80 in/lb [9 Nm]	40 in/lb [4.5 Nm]

HOW TO ORDER

When ordering, please specify:
Design/Model Number and Options.



* NOTE: Hall Effect sensors – Potted or Quick disconnect.
Sensor Part # SHN01, SHP01, SHNQ3, SHPQ3



AGI
AUTOMATION COMPONENTS
2D & 3D

Download 2D & 3D CAD Files
@ www.AGI-Automation.com

Unless noted, all tolerances are as indicated here:



All Dowel Holes are SF (Slip Fit) Locational Tolerance $\pm .0005"$ [0.13mm]



Metric Threads Course Pitch

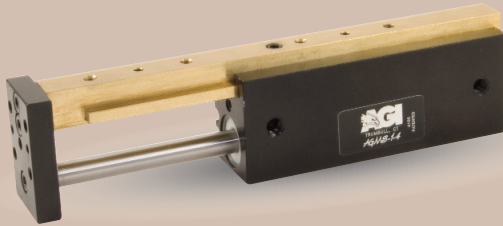
Imperial:
 Inch 0.00 = $\pm .01$
 0.000 = $\pm .005$
 0.0000 = $\pm .0005$

Metric: [0.] = $\pm .25$
 [mm] [0.0] = $\pm .13$
 [0.00] = $\pm .013$



AGMS-1-4 Mini Powered Slide

Built-In Air Cylinder



FEATURES AND BENEFITS

- T-Slot bearing support for the carriage and end plate offers superior load bearing performance throughout the stroke.
- Standard built-in stroke adjustment and stroke lock for precise, repetitive operation.
- Compact, lightweight unit with built-in cylinder.
- Piston seals are U-CUP type for long service life.
- Hall Effect sensors are available to monitor stroke position.
- Multiple mounting surfaces on the body and endplate with threaded and counterbored holes for easy mounting choices.

SPECIFICATIONS

Design: Built-in air cylinder
T-slot slide

Stroke: 2.0 in [50.8 mm]

Thrust Force @ 80 PSI [5.5 BAR]

Extended: 15 lbs [66.7 N]
Retract: 13 lbs [57.8 N]

Recommended Speed: 2-12 in/sec [0.5-.3m/sec]

Pressure Range: Low/High 20-120 PSI [1.4-8 BAR]

Temperature Range: Low/High -20°/150°F [-28°/80°C]

Side Play: ± 0.001 [.03 mm]

Maximum Payload: 18 lbs [81.6 kg]

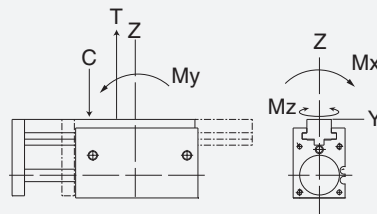
Material: High Strength, Aluminum Alloys, Bronze

Weight: 5 oz [142 g]

Piston Diameter: .50 in [12.7 mm]

January 2009 - PATENTED Made in the USA

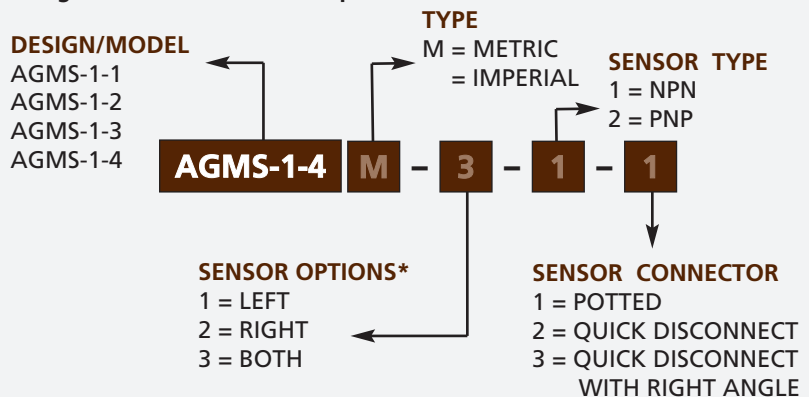
MAXIMUM FORCES & MOMENTS



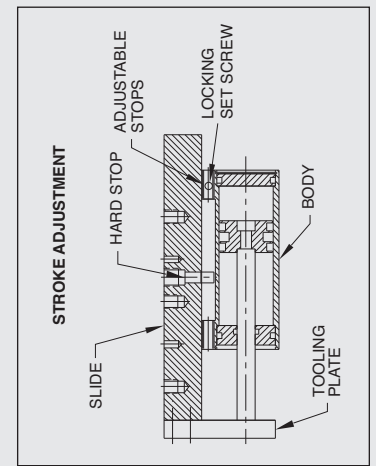
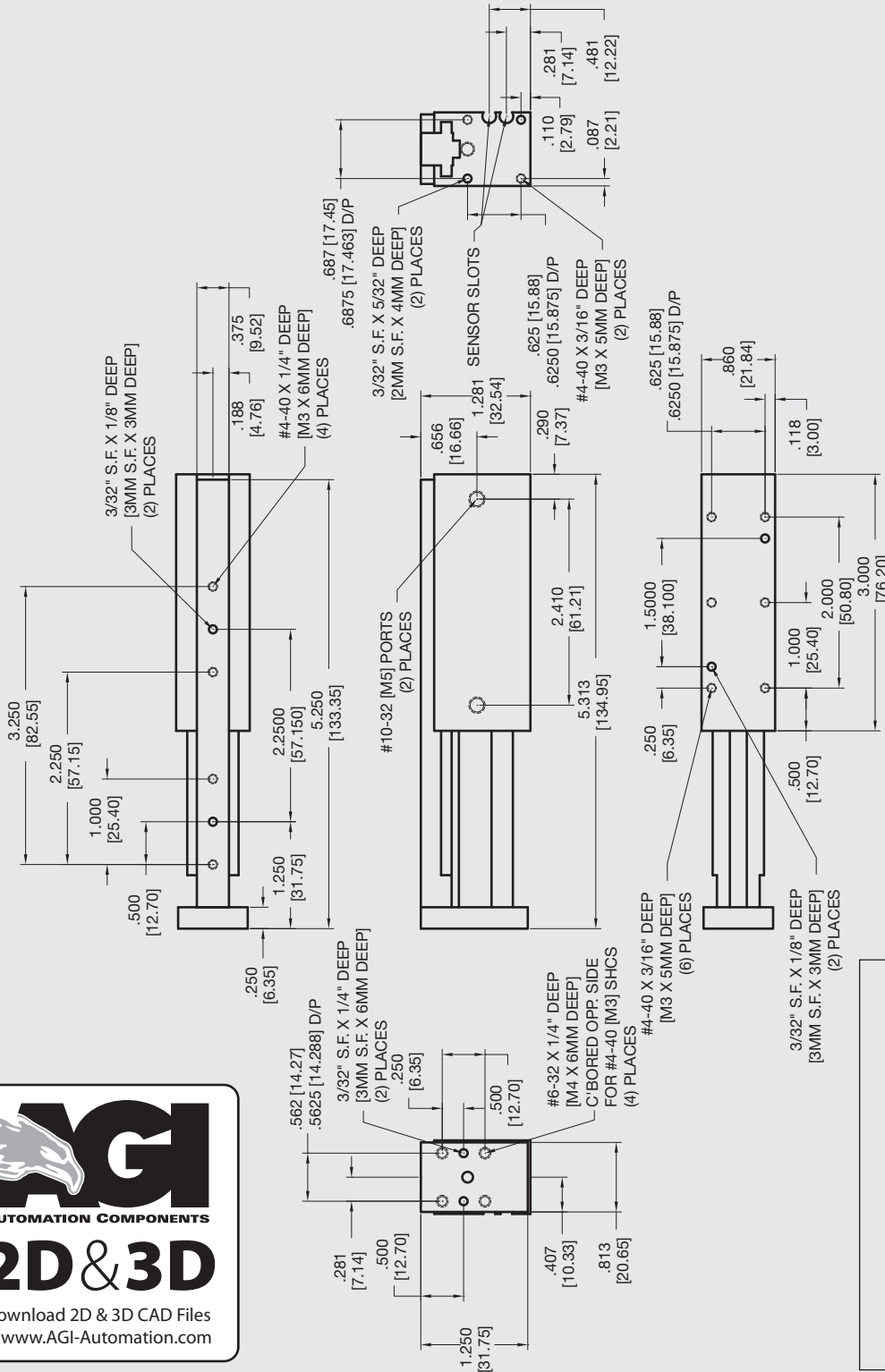
	Static	Dynamic
Max Tensile T	130 lbs [578 N]	55 lbs [244 N]
Max Compressive C	130 lbs [578 N]	55 lbs [244 N]
Max Moment M_x	110 in/lb [12.5 Nm]	50 in/lb [6.7 Nm]
Max Moment M_y	110 in/lb [12.5 Nm]	50 in/lb [6.7 Nm]
Max Moment M_z	110 in/lb [12.5 Nm]	50 in/lb [6.7 Nm]

HOW TO ORDER

When ordering, please specify:
Design/Model Number and Options.



* NOTE: Hall Effect sensors – Potted or Quick disconnect.
Sensor Part # SHN01, SHP01, SHNQ3, SHPQ3




AGI
AUTOMATION COMPONENTS
2D & 3D
Download 2D & 3D CAD Files
@ www.AGI-Automation.com

Unless noted, all tolerances are as indicated here:



All Dowel Holes are SF (Slip Fit) Locational Tolerance ± .0005" [0.13mm]



Metric Threads Course Pitch

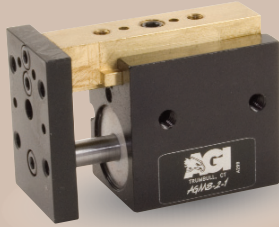
Imperial:
Inch 0.00 = ±.01
0.000 = ±.005
0.0000 = ±.0005

Metric: [0.] = ±.25
[mm] [0.0] = ±.13
[0.00] = ±.013



AGMS-2-1 Mini Powered Slide

Built-In Air Cylinder



FEATURES AND BENEFITS

- T-Slot bearing support for the carriage and end plate offers superior load bearing performance throughout the stroke.
- Standard built-in stroke adjustment and stroke lock for precise, repetitive operation.
- Compact, lightweight unit with built-in cylinder.
- Piston seals are U-CUP type for long service life.
- Hall Effect sensors are available to monitor stroke position.
- Multiple mounting surfaces on the body and endplate with threaded and counterbored holes for easy mounting choices.

SPECIFICATIONS

Design: Built-in air cylinder
T-slot slide

Stroke: 0.5 in [12.7 mm]

Thrust Force @ 80 PSI [5.5 BAR]

Extended: 35 lbs [155 N]
Retract: 33 lbs [146 N]

Recommended Speed: 2-12 in/sec [0.5-.3m/sec]

Pressure Range: Low/High 20-120 PSI [1.4-8 BAR]

Temperature Range: Low/High -20°/150°F [-28°/80°C]

Side Play: ± 0.001 [0.03 mm]

Maximum Payload: 7 lbs [3.2 kg]

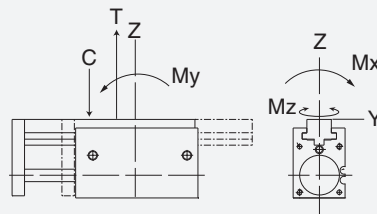
Material: High Strength, Aluminum Alloys, Bronze

Weight: 4.2 oz [120 g]

Piston Diameter: .750 in [19 mm]

January 2009 - PATENTED Made in the USA

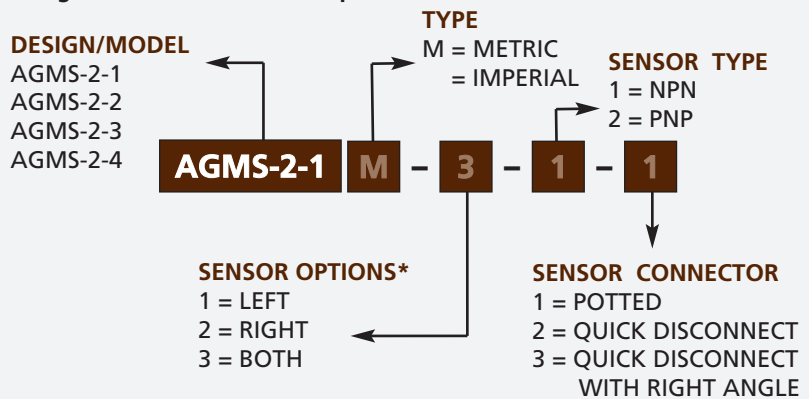
MAXIMUM FORCES & MOMENTS



	Static	Dynamic
Max Tensile T	80 lbs [355 N]	34 lbs [151 N]
Max Compressive C	80 lbs [355 N]	34 lbs [151 N]
Max Moment M_x	35 in/lb [3.9 Nm]	19 in/lb [2.2 Nm]
Max Moment M_y	35 in/lb [3.9 Nm]	19 in/lb [2.2 Nm]
Max Moment M_z	35 in/lb [3.9 Nm]	19 in/lb [2.2 Nm]

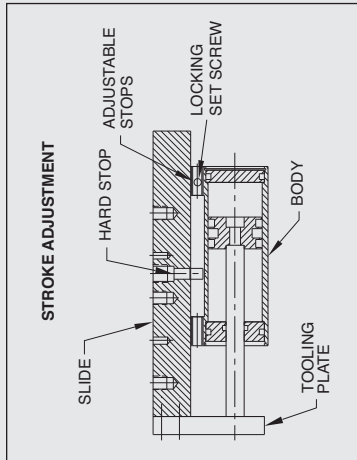
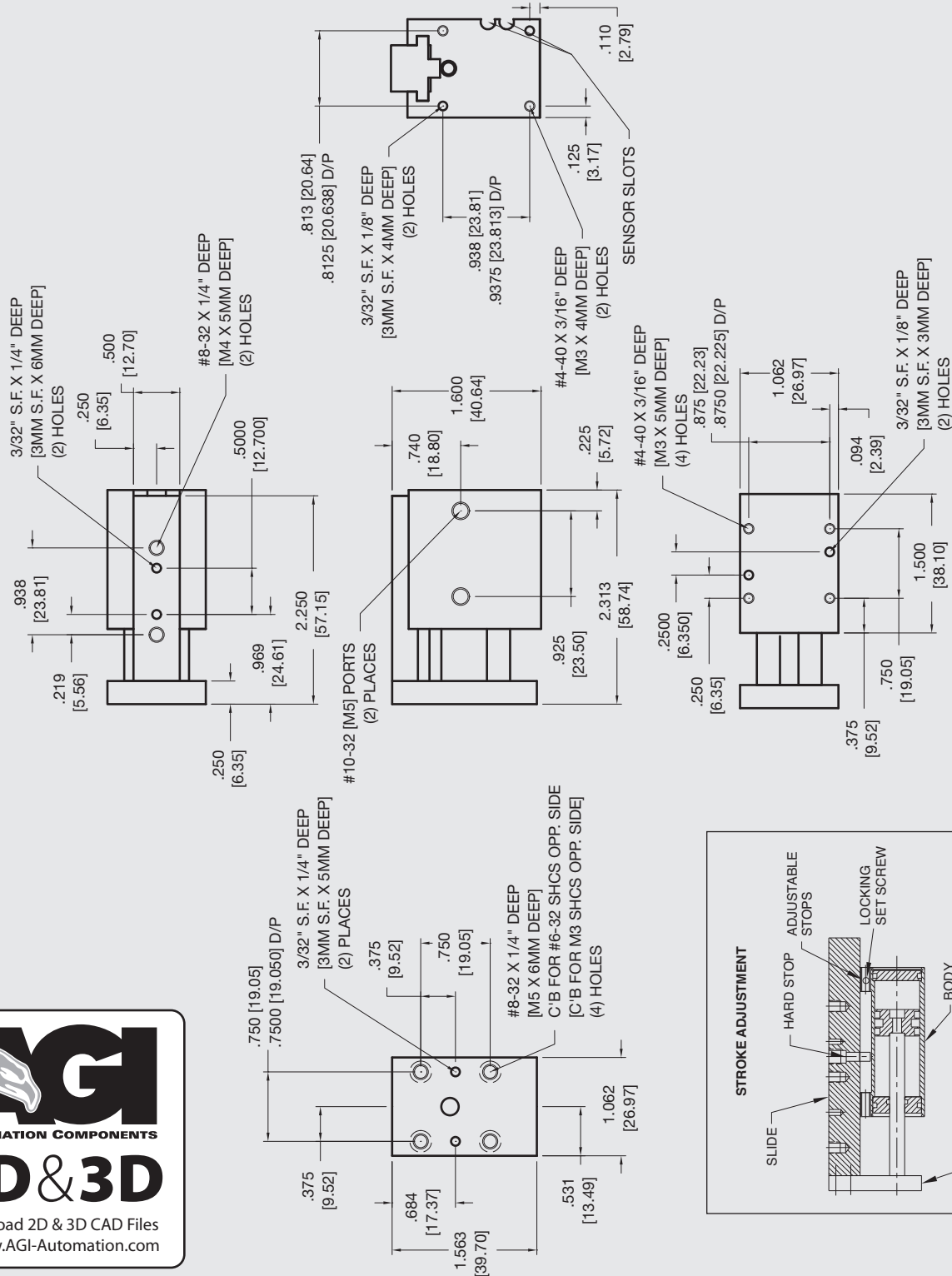
HOW TO ORDER

When ordering, please specify:
Design/Model Number and Options.



* NOTE: Hall Effect sensors are hard wired with 20" pigtail.

Sensor Part # SHN01, SHP01, SHNQ3, SHPQ3



Unless noted, all tolerances are as indicated here:



All Dowel Holes are SF (Slip Fit) Locational Tolerance ± .0005" [0.13mm]



Metric Threads Course Pitch

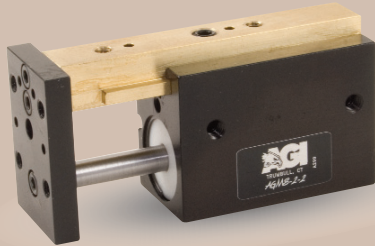
Imperial:
 Inch 0.00 = ±.01
 0.000 = ±.005
 0.0000 = ±.0005

Metric:
 [0.] = ±.25
 [mm] [0.0] = ±.13
 [0.00] = ±.013



AGMS-2-2 Mini Powered Slide

Built-In Air Cylinder



FEATURES AND BENEFITS

- T-Slot bearing support for the carriage and end plate offers superior load bearing performance throughout the stroke.
- Standard built-in stroke adjustment and stroke lock for precise, repetitive operation.
- Compact, lightweight unit with built-in cylinder.
- Piston seals are U-CUP type for long service life.
- Hall Effect sensors are available to monitor stroke position.
- Multiple mounting surfaces on the body and endplate with threaded and counterbored holes for easy mounting choices.

SPECIFICATIONS

Design: Built-in air cylinder
T-slot slide

Stroke: 1 in [25.4 mm]

Thrust Force @ 80 PSI [5.5 BAR]

Extended: 35 lbs [155 N]
Retract: 33 lbs [146 N]

Recommended Speed:

2-12 in/sec
[0.5-.3m/sec]

Pressure Range:

Low/High 20-120 PSI [1.4-8 BAR]

Temperature Range:

Low/High -20°/150°F [-28°/80°C]

Side Play:

± 0.001 [0.03 mm]

Maximum Payload:

13 lbs [5.9 kg]

Material: High Strength, Aluminum Alloys, Bronze

Weight:

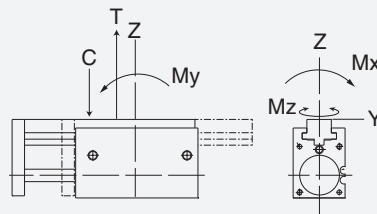
5.6 oz [160 g]

Piston Diameter:

.750 in [19 mm]

January 2009 - PATENTED Made in the USA

MAXIMUM FORCES & MOMENTS



	Static	Dynamic
Max Tensile T	140 lbs [622 N]	60 lbs [266 N]
Max Compressive C	140 lbs [622 N]	60 lbs [266 N]
Max Moment M_x	70 in/lb [8 Nm]	30 in/lb [3.4 Nm]
Max Moment M_y	70 in/lb [8 Nm]	30 in/lb [3.4 Nm]
Max Moment M_z	70 in/lb [8 Nm]	30 in/lb [3.4 Nm]

HOW TO ORDER

When ordering, please specify:
Design/Model Number and Options.

DESIGN/MODEL

- AGMS-2-1
- AGMS-2-2
- AGMS-2-3
- AGMS-2-4

TYPE

M = METRIC
= IMPERIAL

SENSOR TYPE

- 1 = NPN
- 2 = PNP

AGMS-2-2 - **M** - **3** - **1** - **1**

SENSOR OPTIONS*

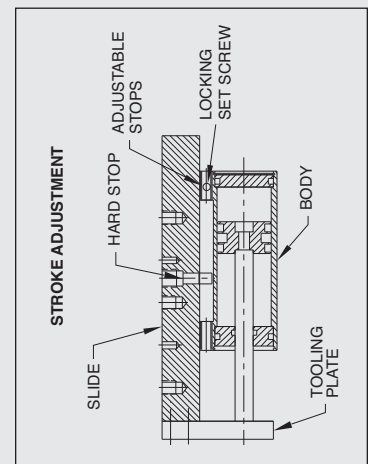
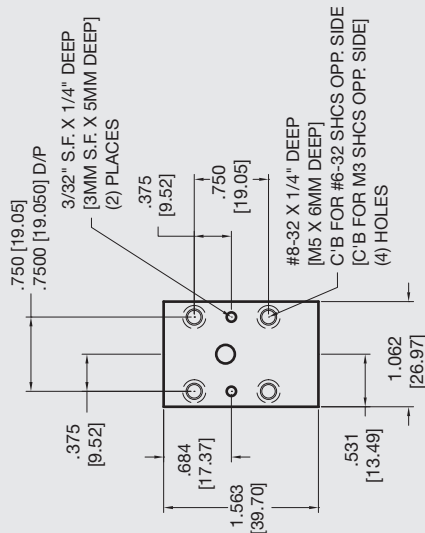
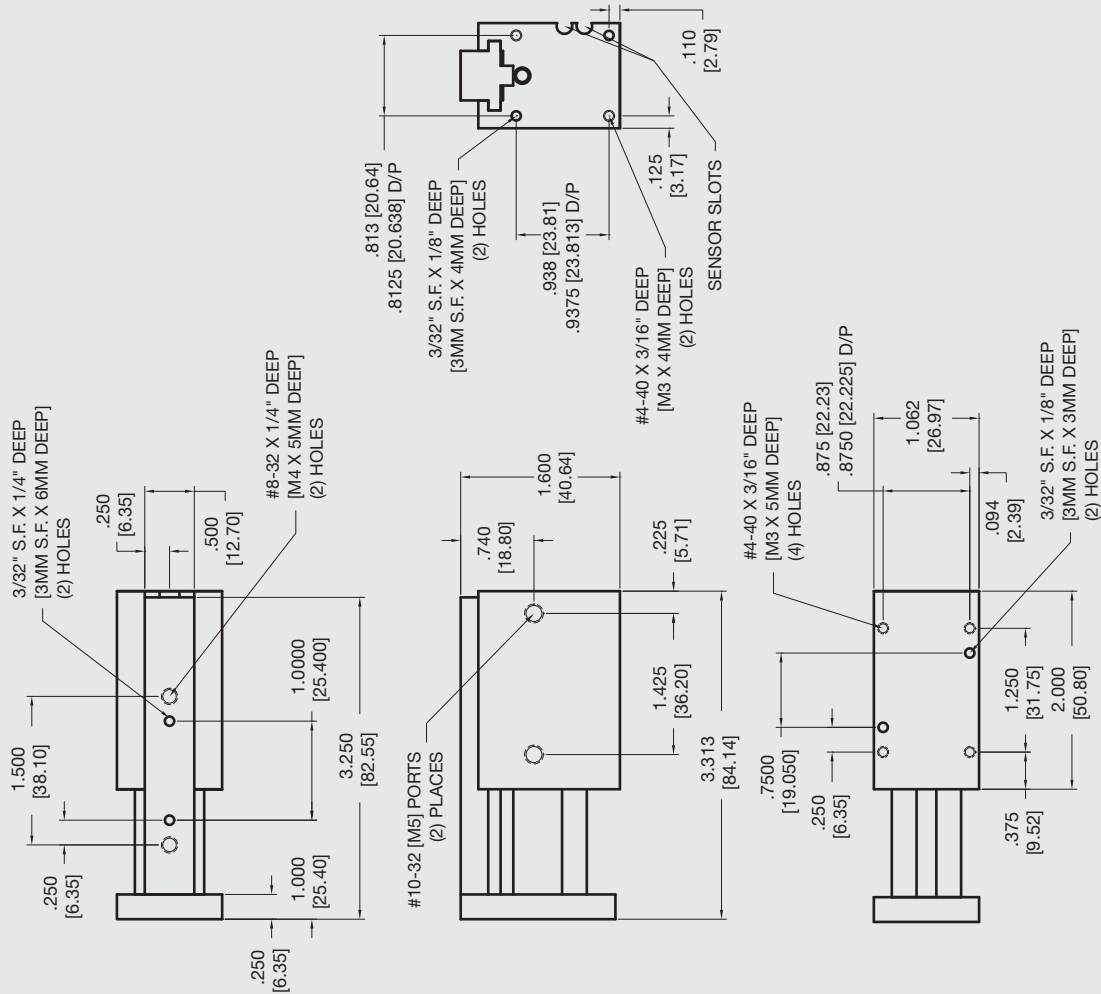
- 1 = LEFT
- 2 = RIGHT
- 3 = BOTH

SENSOR CONNECTOR

- 1 = POTTED
- 2 = QUICK DISCONNECT
- 3 = QUICK DISCONNECT WITH RIGHT ANGLE

* NOTE: Hall Effect sensors are hard wired with 20" pigtail.

Sensor Part # SHN01, SHP01, SHNQ3, SHPQ3



Unless noted, all tolerances are as indicated here:



All Dowel Holes are SF (Slip Fit) Locational Tolerance $\pm .0005"$ [0.13mm]



Metric Threads Course Pitch

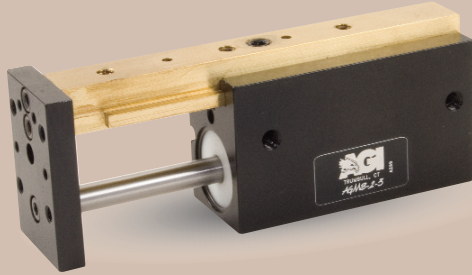
Imperial: 0.00 = ± 0.01
Inch 0.000 = ± 0.005
0.0000 = ± 0.0005

Metric: [0.] = ± 0.25
[mm] [0.0] = ± 0.13
[0.00] = ± 0.13



AGMS-2-3 Mini Powered Slide

Built-In Air Cylinder



FEATURES AND BENEFITS

- T-Slot bearing support for the carriage and end plate offers superior load bearing performance throughout the stroke.
- Standard built-in stroke adjustment and stroke lock for precise, repetitive operation.
- Compact, lightweight unit with built-in cylinder.
- Piston seals are U-CUP type for long service life.
- Hall Effect sensors are available to monitor stroke position.
- Multiple mounting surfaces on the body and endplate with threaded and counterbored holes for easy mounting choices.

SPECIFICATIONS

Design: Built-in air cylinder
T-slot slide

Stroke: 1.5 in [38.1 mm]

Thrust Force @ 80 PSI [5.5 BAR]

Extended: 35 lbs [155 N]
Retract: 33 lbs [146 N]

Recommended Speed: 2-12 in/sec
[0.5-.3m/sec]

Pressure Range: Low/High 20-120 PSI [1.4-8 BAR]

Temperature Range: Low/High -20°/150°F [-28°/80°C]

Side Play: ± 0.001 [0.03 mm]

Maximum Payload: 24 lbs [10.8 kg]

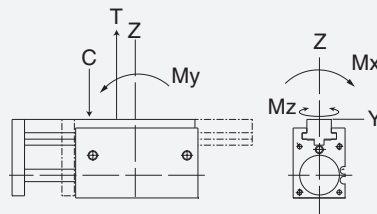
Material: High Strength, Aluminum Alloys, Bronze

Weight: 6.8 oz [193 g]

Piston Diameter: .750 in [19 mm]

January 2009 - PATENTED Made in the USA

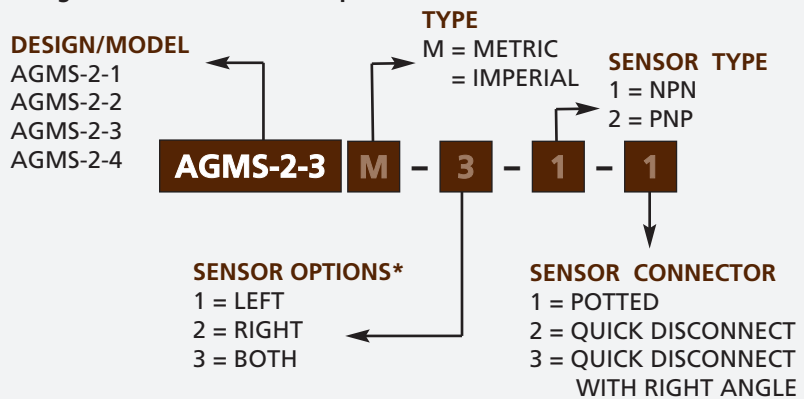
MAXIMUM FORCES & MOMENTS



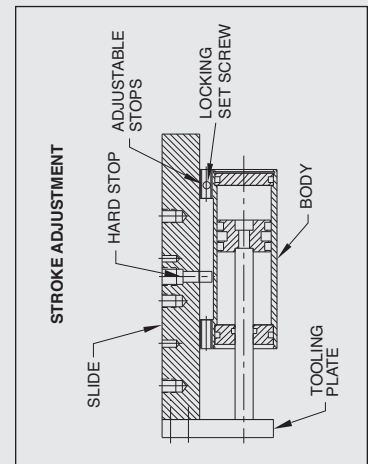
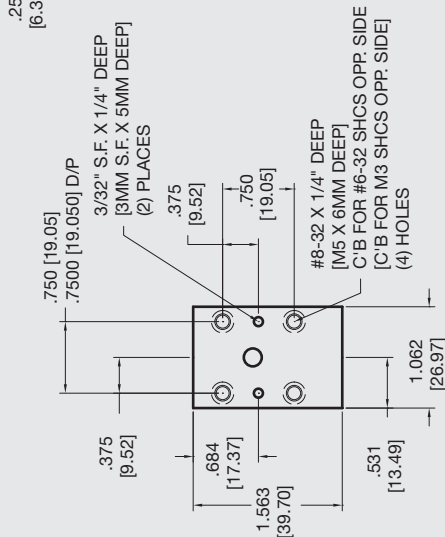
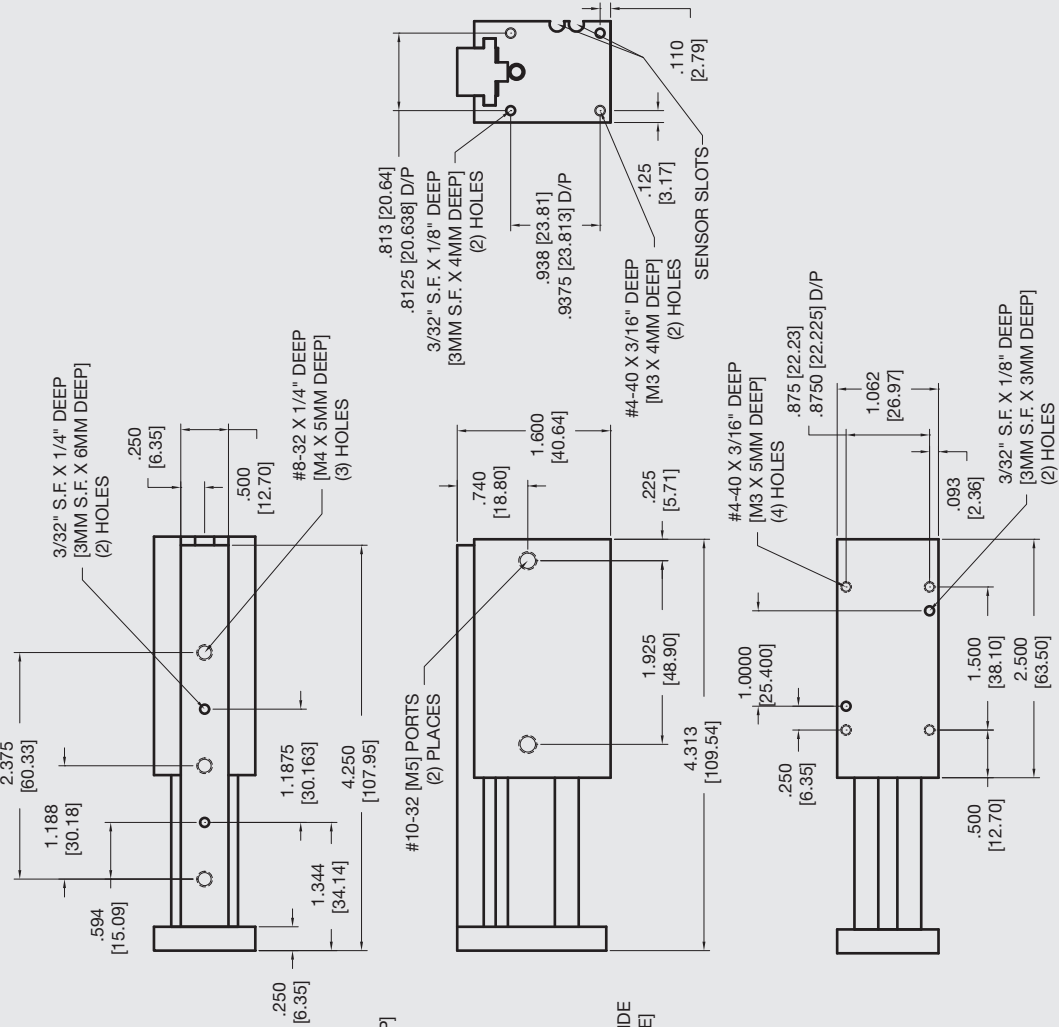
	Static	Dynamic
Max Tensile T	180 lbs [800 N]	77 lbs [342 N]
Max Compressive C	180 lbs [800 N]	77 lbs [342 N]
Max Moment M_x	70 in/lb [8 Nm]	34 in/lb [3.8 Nm]
Max Moment M_y	70 in/lb [8 Nm]	34 in/lb [3.8 Nm]
Max Moment M_z	70 in/lb [8 Nm]	34 in/lb [3.8 Nm]

HOW TO ORDER

When ordering, please specify:
Design/Model Number and Options.



* NOTE: Hall Effect sensors are hard wired with 20" pigtail.
Sensor Part # SHN01, SHP01, SHNQ3, SHPQ3



Unless noted, all tolerances are as indicated here:



All Dowel Holes are SF (Slip Fit) Locational Tolerance $\pm .0005"$ [0.13mm]



Metric Threads Course Pitch

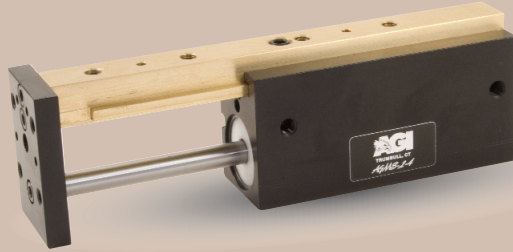
Imperial:
Inch 0.00 = $\pm .01$
0.000 = $\pm .005$
0.0000 = $\pm .0005$

Metric: [0.] = $\pm .25$
[0.0] = $\pm .13$
[0.00] = $\pm .013$



AGMS-2-4 Mini Powered Slide

Built-In Air Cylinder



FEATURES AND BENEFITS

- T-Slot bearing support for the carriage and end plate offers superior load bearing performance throughout the stroke.
- Standard built-in stroke adjustment and stroke lock for precise, repetitive operation.
- Compact, lightweight unit with built-in cylinder.
- Piston seals are U-CUP type for long service life.
- Standard built-in stroke adjustment and stroke lock for precise, repetitive operation.
- Hall Effect sensors are available to monitor stroke position.
- Multiple mounting surfaces on the body and endplate with threaded and counterbored holes for easy mounting choices.

SPECIFICATIONS

Design: Built-in air cylinder
T-slot slide

Stroke: 2 in [50.8 mm]

Thrust Force @ 80 PSI [5.5 BAR]

Extended: 35 lbs [155 N]
Retract: 33 lbs [146 N]

Recommended Speed: 2-12 in/sec [0.5-.3m/sec]

Pressure Range: Low/High 20-120 PSI [1.4-8 BAR]

Temperature Range: Low/High -20°/150°F [-28°/80°C]

Side Play: ± 0.001 [0.03 mm]

Maximum Payload: 30 lbs [13.6 kg]

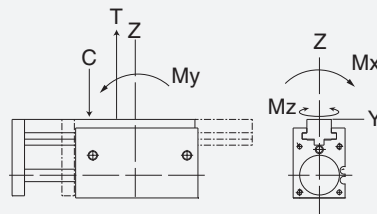
Material: High Strength, Aluminum Alloys, Bronze

Weight: 8.4 oz [240 g]

Piston Diameter: .750 in [19 mm]

January 2009 - PATENTED Made in the USA

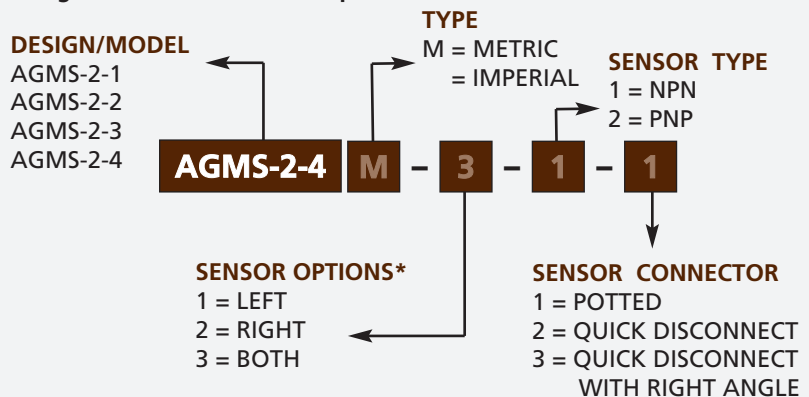
MAXIMUM FORCES & MOMENTS



	Static	Dynamic
Max Tensile T	250 lbs [1112 N]	108 lbs [800 N]
Max Compressive C	250 lbs [1112 N]	108 lbs [800 N]
Max Moment M_x	120 in/lb [8 Nm]	62 in/lb [7 Nm]
Max Moment M_y	120 in/lb [8 Nm]	62 in/lb [7 Nm]
Max Moment M_z	120 in/lb [8 Nm]	62 in/lb [7 Nm]

HOW TO ORDER

When ordering, please specify:
Design/Model Number and Options.

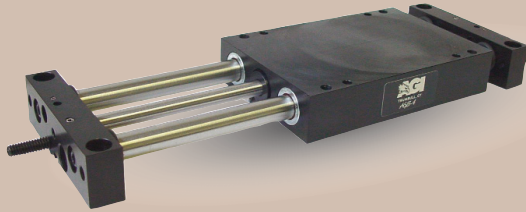


* NOTE: Hall Effect sensors are hard wired with 20" pigtail.
Sensor Part # SHN01, SHP01, SHNQ3, SHPQ3



AGS-4 Powered Slide

Built-In Air Cylinder



FEATURES AND BENEFITS

- Compact lightweight unit with built-in air cylinder.
- Linear ball bearings ride on precision hardened ground steel shafts.
- Units are permanently lubricated.
- Pistons seals are U-Cup type for long service life.
- Aluminum body and end blocks contain tapped holes and dowel pin holes for precision mounting or fixturing.
- Custom mounting holes and air ports can be added. Please consult factory.
- Main body or end blocks can be anchored due to the 1/16" height clearance.
- Standard built-in stroke adjustment for precise repetitive operation.
- Proximity switches are available to monitor end of stroke position of the body.
- Optional shock absorbers can be ordered for smooth operation.
- Series AGS is fully field repairable for cost savings and minimum down time. Repair kits are available for repairs or maintenance.

SPECIFICATIONS: AGS-4

Design: Built-in air cylinder, linear bearings on steel hardened shafts

Stroke: 1 to 4 in [25.4 mm to 101 mm]

Thrust Force @ 80 PSI [5.5 BAR]
25 lbs [111 N]

Recommended Speed: 2-14 in/sec [0.5-.35 m/sec]

Pressure Range:
Low/High 20-120 PSI [1.4-8 BAR]

Temperature Range:
Low/High -20°/150°F [-28°/80°C]

Side Play: ± 0.001 [.03 mm]

Maximum Payload: 25 lbs [11.3 kg]

Material: High Strength, Aluminum Alloys, Steel Components

Weight: 3.5 lbs [1.6 kg]

Piston Diameter: .750 in [19 mm]

SPECIFICATIONS: AGS-4-X

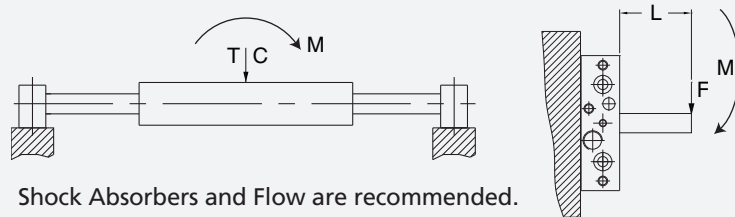
Custom Stroke: X= 0 to 4 in [101.6 mm]

All Other Specifications: Same As Above

PAYLOAD DATA

Max Tensile T	90 lbs	[400 N]
Max Compressive C	90 lbs	[400 N]
Max Moment M_x	220 in/lb	[25 Nm]
Max Moment M_y	220 in/lb	[25 Nm]
Max Moment M_z	220 in/lb	[25 Nm]

Deflection @ Max load 0.003
Maximum Payload (25 lbs)
Recommended load for smooth operation.



Shock Absorbers and Flow are recommended.

HOW TO ORDER

When ordering, please specify:
Design/Model Number and Options.

DESIGN/MODEL

AGS-4
AGS-5
AGS-6

SENSOR OPTIONS

1 = LEFT
2 = RIGHT
3 = BOTH

SENSOR TYPE*

1 = NPN
2 = PNP

SHOCK ABSORBERS

AGS-4 **M** - **4** - **3** - **1** - **1** - **S**

TYPE
M = METRIC
= IMPERIAL

SENSOR CONNECTOR

1 = POTTED
2 = QUICK DISCONNECT
3 = QUICK DISCONNECT WITH RIGHT ANGLE

AGS-4 STROKE (1", 2", 3", 4")
AGS-5 STROKE (1", 2", 3", 4", 5")
AGS-6 STROKE (1", 2", 3", 4", 5", 6")

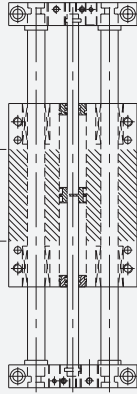
* NOTE: Proximity sensors are 8 mm diam., 12-30 VDC, 50 mA and come with 2 meter cable.

Sensor Part # SNC08, SNQ08, SPC08, SPQ08

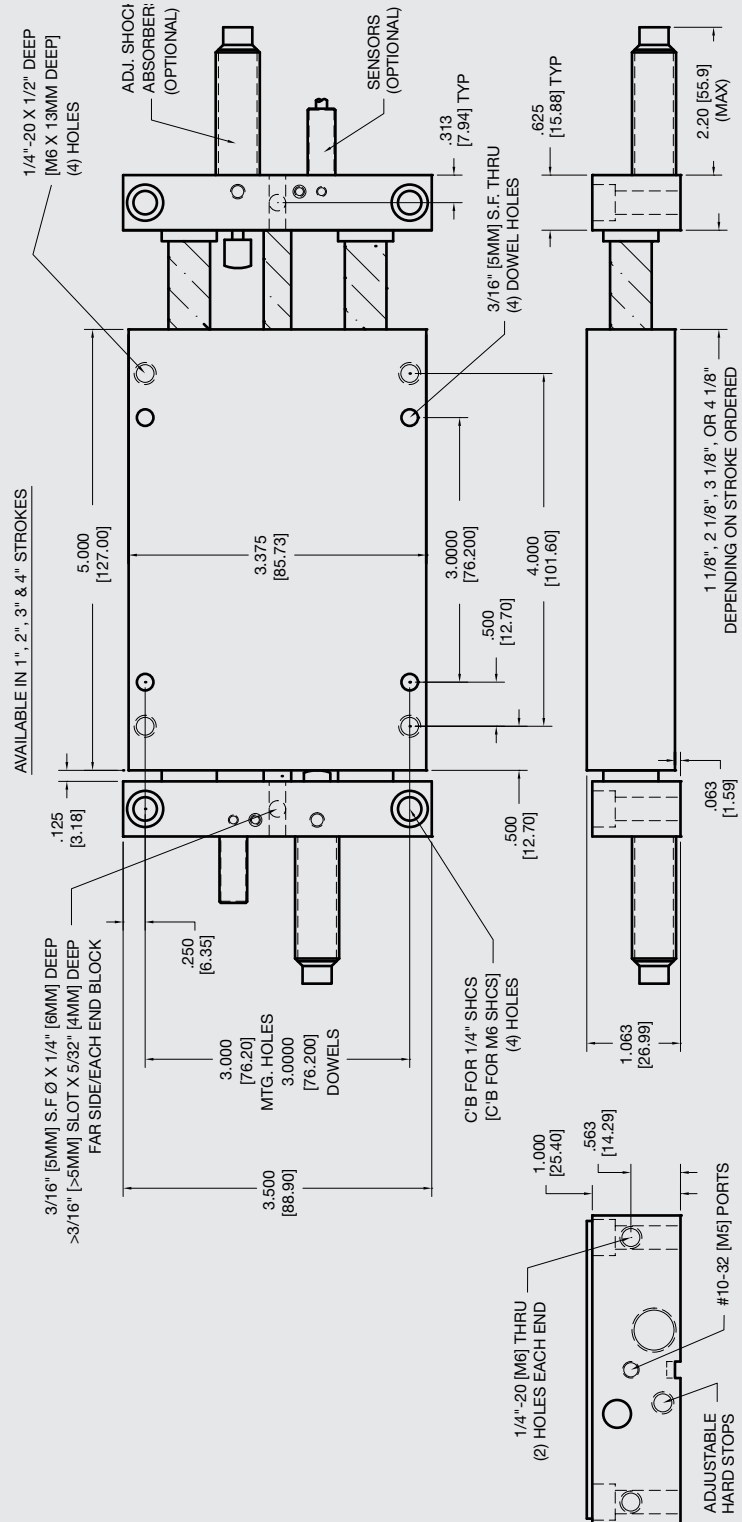
January 2009 - PATENTED Made in the USA

CUSTOM MOUNTING AREA

NOTE: The end blocks and body can be drilled and tapped from top of back side.
 Shaded area available for custom drilling and tapping.
 For drilling and tapping end blocks, please consult the factory.



WARNING! Do not exceed mounting screw depth. LOOK! More Technical specifications for sensors on "Sensors Accessories" page.




Download 2D & 3D CAD Files
 @ www.AGI-Automation.com

Unless noted, all tolerances are as indicated here:



All Dowel Holes are SF (Slip Fit) Locational Tolerance ± .0005" [0.13mm]



Metric Threads Course Pitch

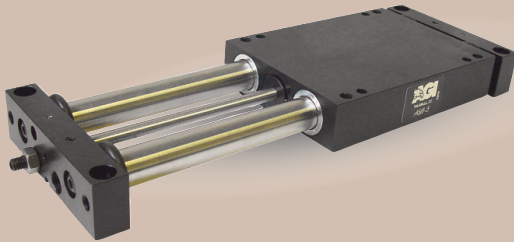
Imperial:
 Inch 0.00 = ±.01
 0.000 = ±.005
 0.0000 = ±.0005

Metric:
 [0.] = ±.25
 [0.0] = ±.13
 [0.00] = ±.013



AGS-5 Powered Slide

Built-In Air Cylinder



FEATURES AND BENEFITS

- Compact lightweight unit with built-in air cylinder.
- Linear ball bearings ride on precision hardened ground steel shafts.
- Units are permanently lubricated.
- Pistons seals are U-Cup type for long service life.
- Aluminum body and end blocks contain tapped holes and dowel pin holes for precision mounting or fixturing.
- Custom mounting holes and air ports can be added. Please consult factory.
- Main body or end blocks can be anchored due to the 1/16" height clearance.
- Standard built-in stroke adjustment for precise repetitive operation.
- Proximity switches are available to monitor end of stroke position of the body.
- Optional shock absorbers can be ordered for smooth operation.
- Series AGS is fully field repairable for cost savings and minimum down time. Repair kits are available for repairs or maintenance.

SPECIFICATIONS: AGS-5

Design: Built-in air cylinder, linear bearings on steel hardened shafts

Stroke: 5 in

Thrust Force @ 80 PSI [5.5 BAR]

50 lbs [222 N]

Recommended Speed:

2-14 in/sec
[0.5-.35 m/sec]

Pressure Range:
Low/High

20-120 PSI [1.4-8 BAR]

Temperature Range:

Low/High -20°/150°F [-28°/80°C]

Side Play:

± 0.001 [0.03 mm]

Maximum Payload: 50 lbs [22.6 kg]

Material: High Strength, Aluminum Alloys, Steel Components

Weight:

6.5 lbs [3 kg]

Piston Diameter:

1.0 in [25 mm]

SPECIFICATIONS: AGS-5-X

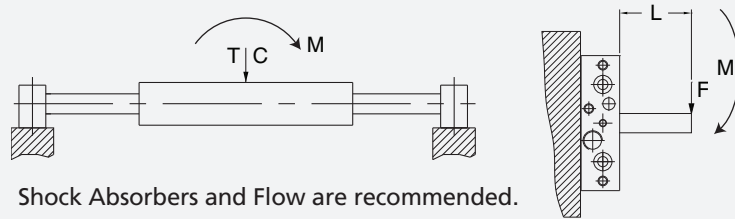
Custom Stroke: X= 0 to 5 in [XXX mm]

All Other Specifications: Same As Above

PAYLOAD DATA

Max Tensile T	150 lbs	[667 N]
Max Compressive C	150 lbs	[667 N]
Max Moment M_x	550 in/lb	[62 Nm]
Max Moment M_y	550 in/lb	[62 Nm]
Max Moment M_z	550 in/lb	[62 Nm]

Deflection @ Max load 0.003
Maximum Payload (50 lbs)
Recommended load for smooth operation.



HOW TO ORDER

When ordering, please specify:
Design/Model Number and Options.

DESIGN/MODEL

AGS-4
AGS-5
AGS-6

SENSOR OPTIONS

1 = LEFT
2 = RIGHT
3 = BOTH

SENSOR TYPE*

1 = NPN
2 = PNP

SHOCK ABSORBERS

AGS-5 M - 5 - 3 - 1 - 1 - S

TYPE

M = METRIC
= IMPERIAL

AGS-4 STROKE (1", 2", 3", 4")
AGS-5 STROKE (1", 2", 3", 4", 5")
AGS-6 STROKE (1", 2", 3", 4", 5", 6")

SENSOR CONNECTOR

1 = POTTED
2 = QUICK DISCONNECT
3 = QUICK DISCONNECT WITH RIGHT ANGLE

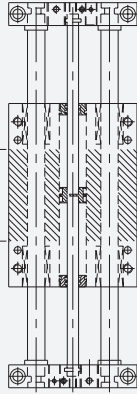
* NOTE: Proximity sensors are 8 mm diam., 12-30 VDC, 50 mA and come with 2 meter cable.

Sensor Part # SNC08, SNQ08, SPC08, SPQ08

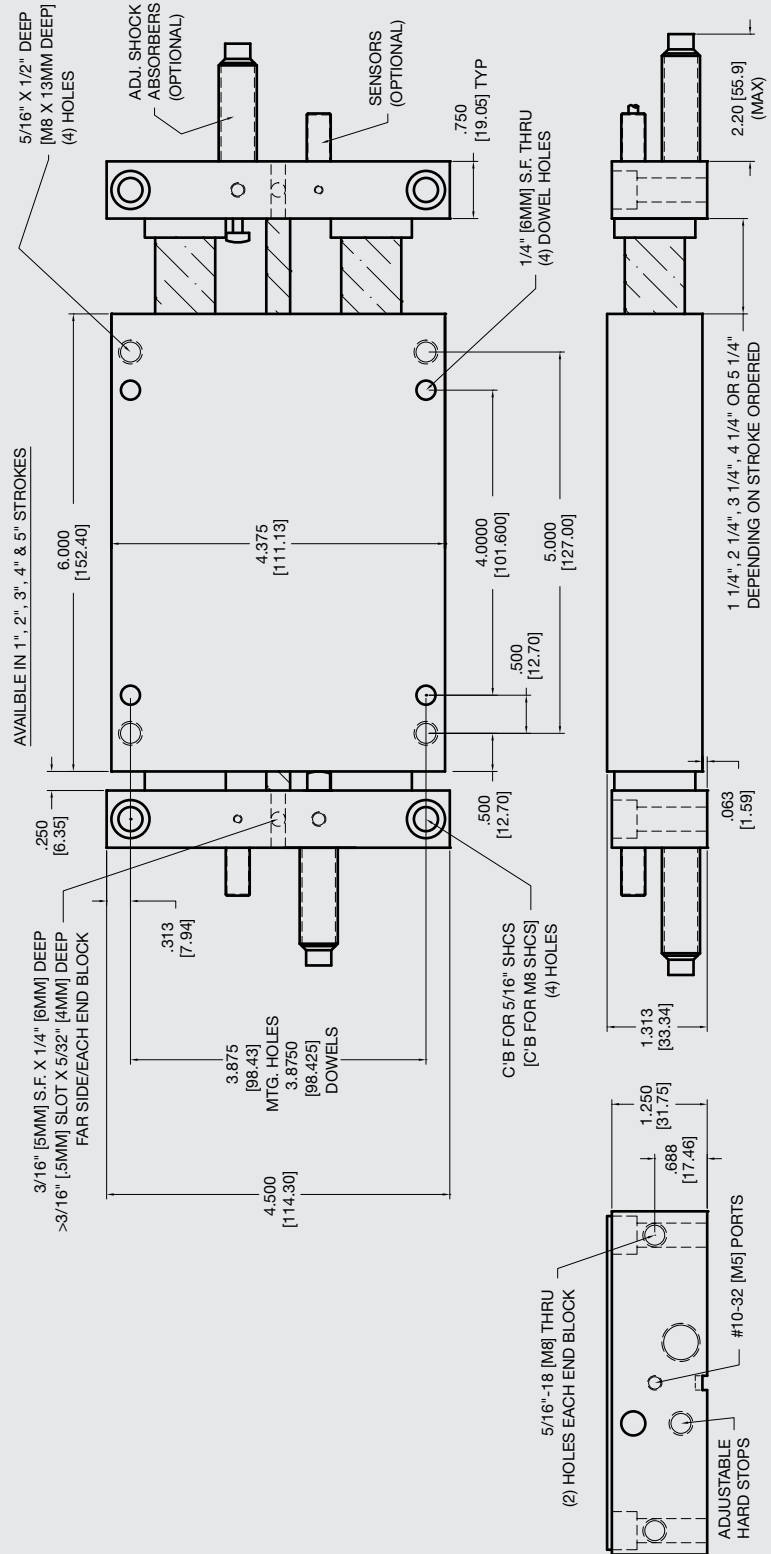
January 2009 - PATENTED Made in the USA

CUSTOM MOUNTING AREA

NOTE: The end blocks and body can be drilled and tapped from top of back side.
 Shaded area available for custom drilling and tapping.
 For drilling and tapping end blocks, please consult the factory.



WARNING! Do not exceed mounting screw depth. **LOOK!** More Technical specifications for sensors on "Sensors Accessories" page.



Download 2D & 3D CAD Files
 @ www.AGI-Automation.com

Unless noted, all tolerances are as indicated here:



All Dowel Holes are SF (Slip Fit) Locational Tolerance ± .0005" [0.13mm]



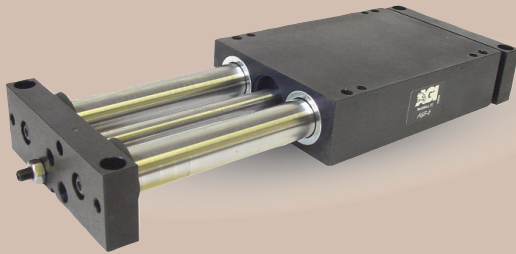
Metric Threads Course Pitch

Imperial:
 Inch 0.00 = ±.01
 0.000 = ±.005
 0.0000 = ±.0005

Metric:
 [0.] = ±.25
 [0.0] = ±.13
 [0.00] = ±.013

AGS-6 Powered Slide

Built-In Air Cylinder



FEATURES AND BENEFITS

- Compact lightweight unit with built-in air cylinder.
- Linear ball bearings ride on precision hardened ground steel shafts.
- Units are permanently lubricated.
- Pistons seals are U-Cup type for long service life.
- Aluminum body and end blocks contain tapped holes and dowel pin holes for precision mounting or fixturing.
- Custom mounting holes and air ports can be added. Please consult factory.
- Main body or end blocks can be anchored due to the 1/16" height clearance.
- Standard built-in stroke adjustment for precise repetitive operation.
- Proximity switches are available to monitor end of stroke position of the body.
- Optional shock absorbers can be ordered for smooth operation.
- Series AGS is fully field repairable for cost savings and minimum down time. Repair kits are available for repairs or maintenance.

SPECIFICATIONS: AGS-6

Design: Built-in air cylinder, linear bearings on steel hardened shafts

Stroke: 1-6 in

Thrust Force @ 80 PSI [5.5 BAR]

80 lbs [355 N]

Recommended Speed:

2-14 in/sec
[0.5-35 m/sec]

Pressure Range:
Low/High

20-120 PSI [1.4-8 BAR]

Temperature Range:

Low/High -20°/150°F [-28°/80°C]

Side Play:

± 0.001 [0.03 mm]

Maximum Payload: 100 lbs [45.3 kg]

Material: High Strength, Aluminum Alloys, Steel Components

Weight:

12 lbs [5.5 kg]

Piston Diameter:

1.25 in [31.7 mm]

SPECIFICATIONS: AGS-6-X

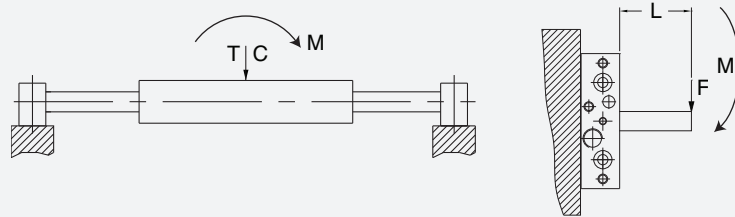
Custom Stroke: X= 0 to 6 in [152 mm]

All Other Specifications: Same As Above

PAYLOAD DATA

Max Tensile T	220 lbs	[980 N]
Max Compressive C	220 lbs	[980 N]
Max Moment M_x	1000 in/lb	[113 Nm]
Max Moment M_y	1000 in/lb	[113 Nm]
Max Moment M_z	1000 in/lb	[113 Nm]

Deflection @ Max load 0.003
Maximum Payload (100 lbs)
Recommended load for smooth operation.



HOW TO ORDER

When ordering, please specify:
Design/Model Number and Options.

DESIGN/MODEL

AGS-4
AGS-5
AGS-6

SENSOR OPTIONS

1 = LEFT
2 = RIGHT
3 = BOTH

SENSOR TYPE*

1 = NPN
2 = PNP

SHOCK ABSORBERS

AGS-6 M - 6 - 3 - 1 - 1 - S

TYPE
M = METRIC
= IMPERIAL

AGS-4 STROKE (1", 2", 3", 4")
AGS-5 STROKE (1", 2", 3", 4", 5")
AGS-6 STROKE (1", 2", 3", 4", 5", 6")

SENSOR CONNECTOR

1 = POTTED
2 = QUICK DISCONNECT
3 = QUICK DISCONNECT WITH RIGHT ANGLE

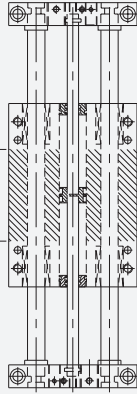
* NOTE: Proximity sensors are 8 mm diam., 12-30 VDC, 50 mA and come with 2 meter cable.

Sensor Part # SNC08, SNQ08, SPC08, SPQ08

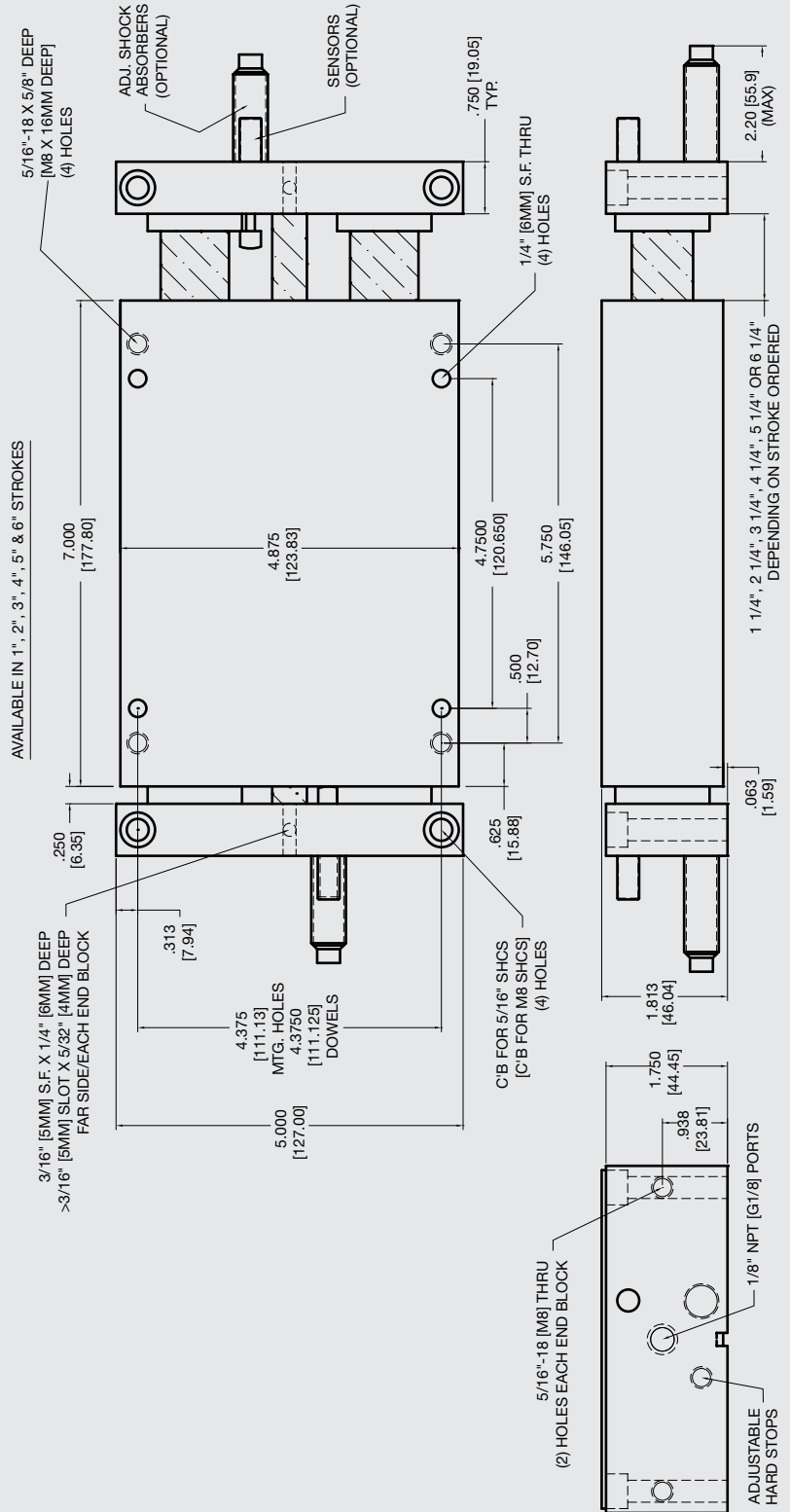
January 2009 - PATENTED Made in the USA

CUSTOM MOUNTING AREA

NOTE: The end blocks and body can be drilled and tapped from top of back side.
Shaded area available for custom drilling and tapping.
For drilling and tapping end blocks, please consult the factory.



WARNING! Do not exceed mounting screw depth. LOOK! More Technical specifications for sensors on "Sensors Accessories" page.



Unless noted, all tolerances are as indicated here:



All Dowel Holes are SF (Slip Fit) Locational Tolerance ± .0005" [.013mm]



Metric Threads Course Pitch

Imperial:
Inch 0.00 = ±.01
0.000 = ±.005
0.0000 = ±.0005

Metric: [0.] = ±.25
[0.0] = ±.13
[0.00] = ±.013



AGT-2 Powered Slide Linear Thruster



FEATURES AND BENEFITS

- Floating piston rod coupling eliminates cylinder binding.
- Compact, lightweight unit with replaceable air-cylinder.
- Units are permanently lubricated.
- Optional stroke adjustment for precise, repetitive operation.
- Proximity switches are available to monitor end of stroke position of the body.
- Optional shock absorbers can be ordered for smooth operation.
- Aluminum body end blocks contain taped holes and dowel pin holes for precision mounting or fixturing.
- Standard end plate to stop shaft vibrations.

SPECIFICATIONS

Design: Replaceable air cylinder, linear bearings on steel hardened shafts

Stroke: 4 in max. (1" increments)
[100 mm] [25.4 mm]

Thrust Force @ 80 PSI [5.5 BAR]

30 lbs (multiply force factor by input pressure in PSI)

Extended: 20 lbs [89 N]

Retract: 19 lbs [85 N]

Recommended Speed:

1-40 in/sec

Pressure Range:

Low/High 20-120 PSI [1.4-8 BAR]

Temperature Range:

Low/High -20°/150°F [-28°/80°C]

Side Play: ± 0.001 [0.03 mm]

Deflection: See Chart

Maximum Payload: 5 lbs [2.2 kg]

Material: High Strength, Aluminum Alloys, Steel Components

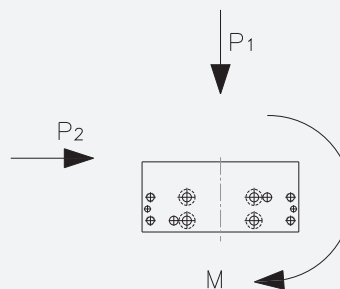
Weight: 0.50 lbs + 0.05 lb/in
[0.23 kg + 0.86 g/mm]

Shaft Diameter: 3/16 in [5 mm]

Piston Diameter: 9/16 in [14 mm]

January 2009 - PATENTED Made in the USA

PAYLOAD FORCES

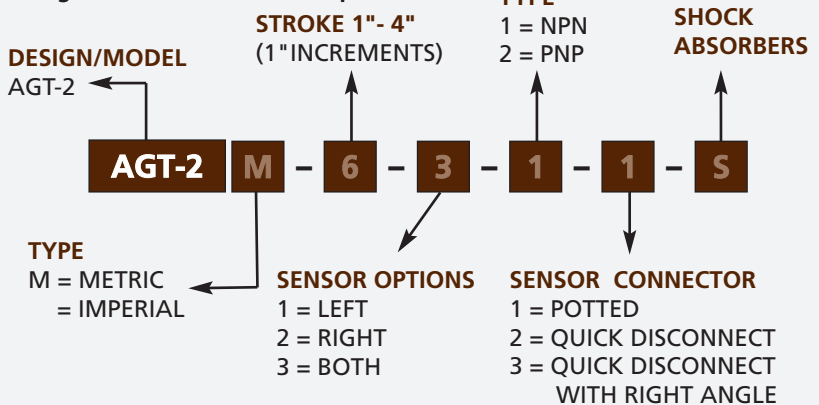


WARNING! Do not exceed mounting screw depth.

LOOK! More Technical specifications for sensors on "Sensors Accessories" page.

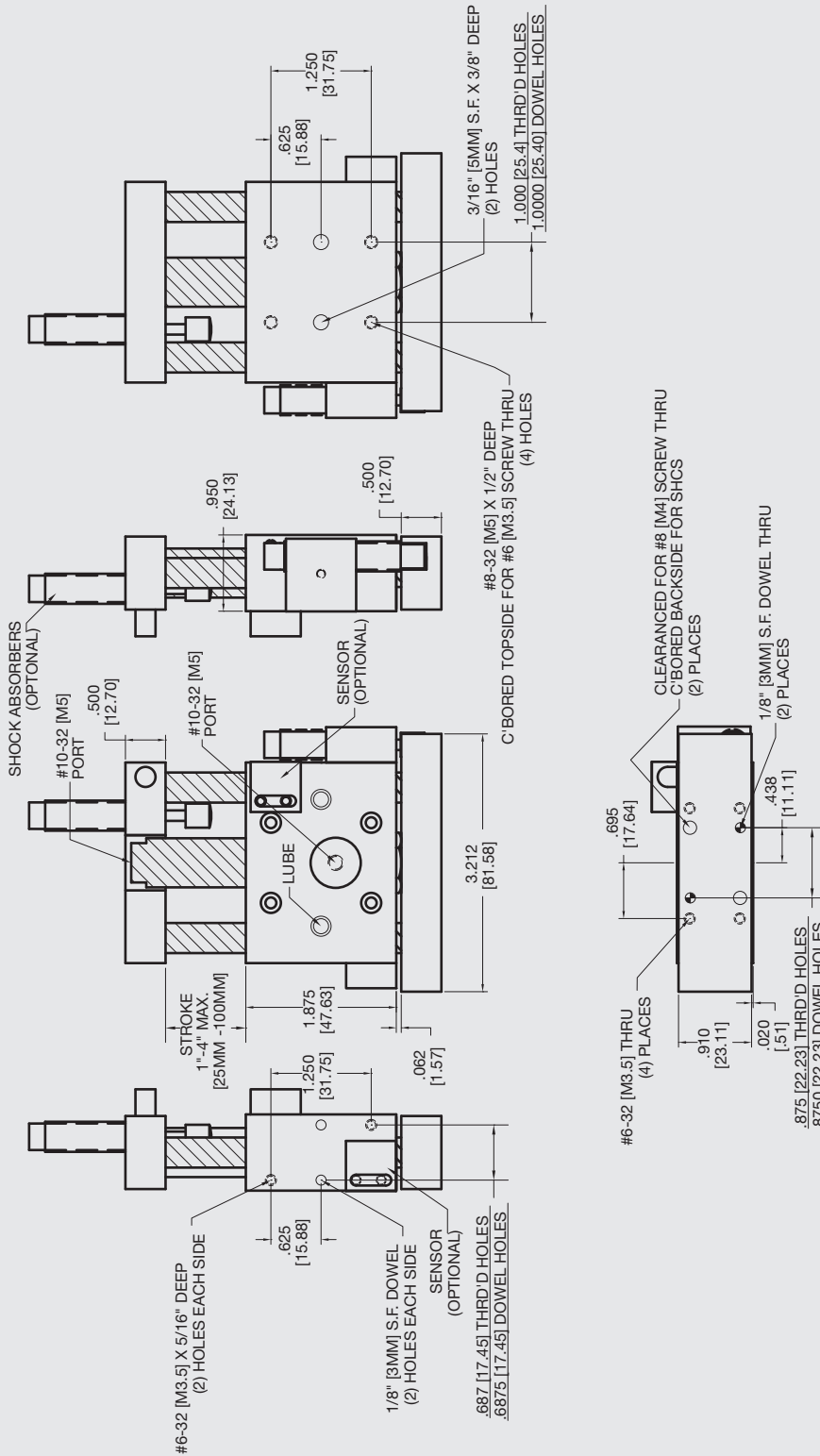
HOW TO ORDER

When ordering, please specify:
Design/Model Number and Options.



* NOTE: Proximity sensors are 8 mm diam., 12-30 VDC, 50 mA and come with 2 meter cable.

Sensor Part # SNC08, SNQ08, SPC08, SPQ08



PAYLOAD DATA

Stroke Length	Maximum Load (lbs)	Maximum Moments (in-lbs)	Maximum Deflection	
			P1	P2
1 [25.4 mm]	5 [2.3 kg]	14 [1.6 Nm]	.001 [.03 mm]	.001 [.03 mm]
2 [50.8 mm]	5 [2.3 kg]	10 [1.1 Nm]	.001 [.03 mm]	.001 [.03 mm]
3 [76.2 mm]	5 [2.3 kg]	8 [0.9 Nm]	.002 [.05 mm]	.002 [.05 mm]
4 [101.6 mm]	5 [2.3 kg]	6 [0.7 Nm]	.005 [.13 mm]	.004 [.10 mm]



Download 2D & 3D CAD Files
@ www.AGI-Automation.com

Unless noted, all tolerances are as indicated here:

 All Dowel Holes are SF (Slip Fit) Locational Tolerance ± .0005" [.013mm]
 Metric Threads Course Pitch
Imperial: 0.00 = ±.01
 Inch 0.000 = ±.005
 0.0000 = ±.0005
Metric: [0.] = ±.25
 [mm] [0.0] = ±.13
 [0.00] = ±.013

AGT-3 Powered Slide

Linear Thruster



FEATURES AND BENEFITS

- Floating piston rod coupling eliminates cylinder binding.
- Compact, lightweight unit with replaceable air-cylinder.
- Units are permanently lubricated.
- Optional stroke adjustment for precise, repetitive operation.
- Proximity switches are available to monitor end of stroke position of the body.
- Optional shock absorbers can be ordered for smooth operation.
- Aluminum body end blocks contain taped holes and dowel pin holes for precision mounting or fixturing.
- Standard end plate to stop shaft vibrations.

SPECIFICATIONS

Design: Replaceable air cylinder, linear bearings on steel hardened shafts

Stroke: 6 in max. (1" increments)
[152 mm] [25.4 mm]

Thrust Force @ 80 PSI [5.5 BAR]

30 lbs (multiply force factor by input pressure in PSI)

Extended: 44 lbs [196 N]

Retract: 39 lbs [174 N]

Recommended Speed:

1-40 in/sec

Pressure Range:

Low/High 20-120 PSI [1.4-8 BAR]

Temperature Range:

Low/High -20°/150°F [-28°/80°C]

Side Play: ± 0.001 [0.03 mm]

Deflection: See Chart

Maximum Payload: 10 lbs [4.5 kg]

Material: High Strength, Aluminum Alloys, Steel Components

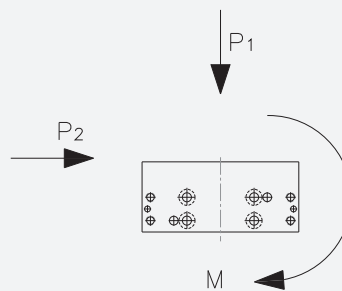
Weight: 1.50 lbs + 2 oz/in
[.7 kg + 1.4 g/mm]

Shaft Diameter: 3/8 in [9.5 mm]

Piston Diameter: 3/4 in [19 mm]

January 2009 - PATENTED Made in the USA

PAYLOAD FORCES

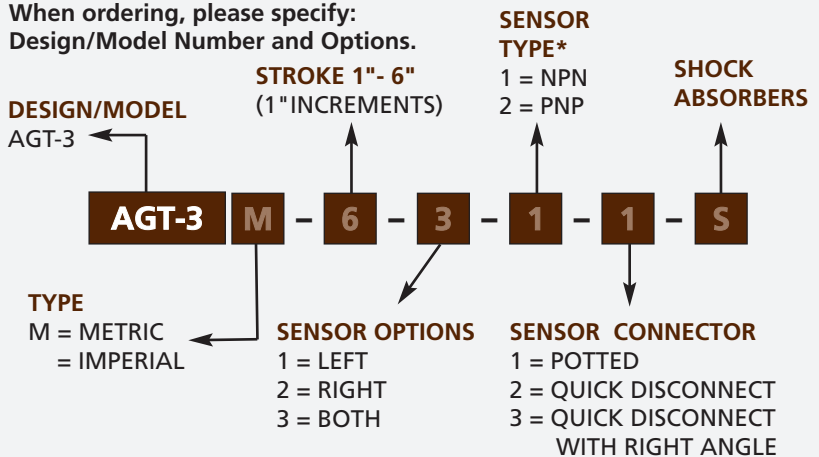


WARNING! Do not exceed mounting screw depth.

LOOK! More Technical specifications for sensors on "Sensors Accessories" page.

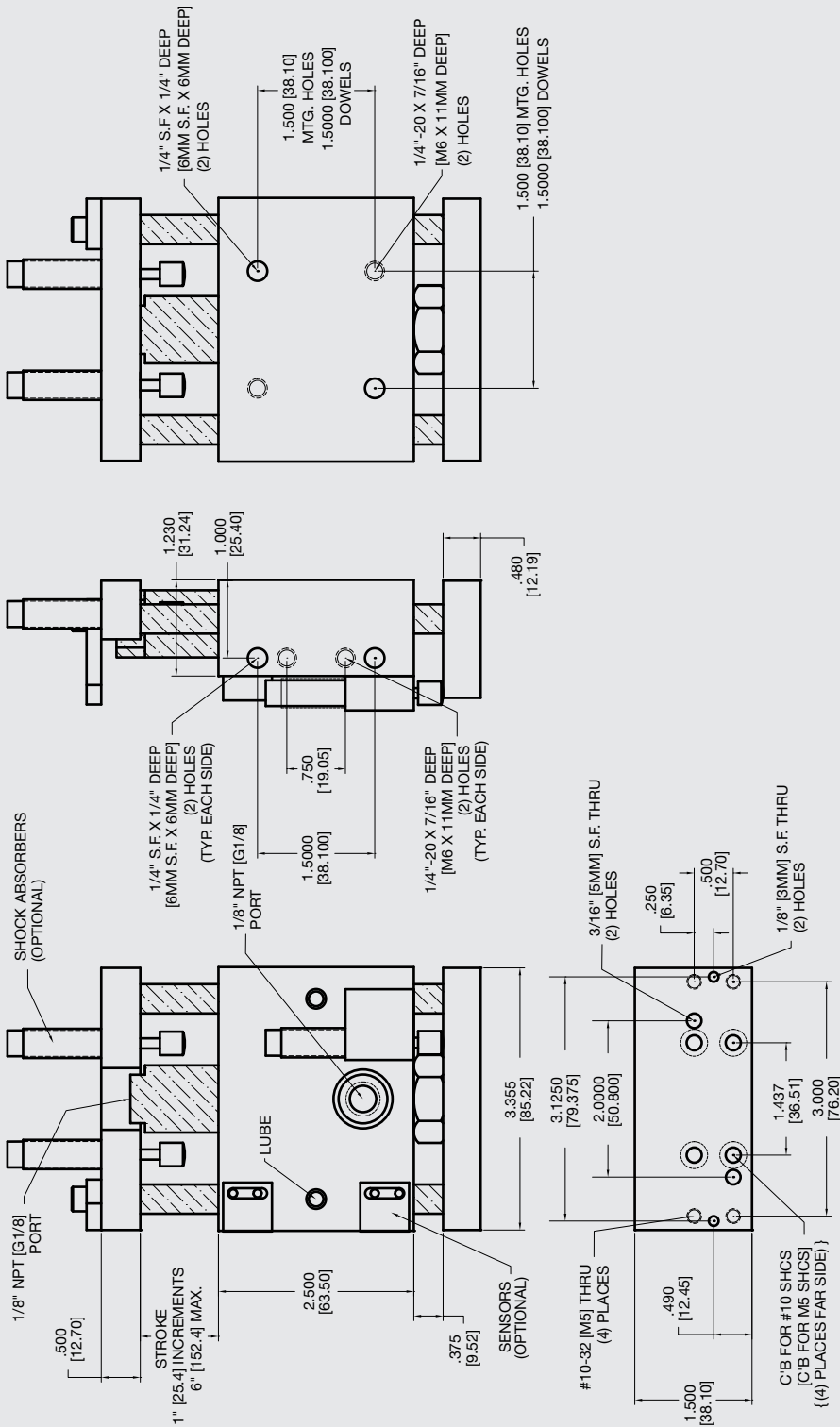
HOW TO ORDER

When ordering, please specify:
Design/Model Number and Options.



* NOTE: Proximity sensors are 8 mm diam., 12-30 VDC, 50 mA and come with 2 meter cable.

Sensor Part # SNC08, SNQ08, SPC08, SPQ08



PAYLOAD DATA

Stroke Length	Maximum Load (lbs)	Maximum Moments (in-lbs)	Maximum Deflection	
			P1	P2
1 [25.4 mm]	10 [4.5 kg]	28 [3.2 Nm]	.001 [.03 mm]	.001 [.03 mm]
2 [50.8 mm]	10 [4.5 kg]	22 [2.5 Nm]	.001 [.03 mm]	.001 [.03 mm]
3 [76.2 mm]	10 [4.5 kg]	18 [2.1 Nm]	.002 [.05 mm]	.002 [.05 mm]
4 [101.6 mm]	10 [4.5 kg]	15 [1.7 Nm]	.005 [.13 mm]	.004 [.10 mm]
5 [127.0 mm]	10 [4.5 kg]	13 [1.5 Nm]	.009 [.23 mm]	.006 [.15 mm]
6 [152.4 mm]	10 [4.5 kg]	11 [1.3 Nm]	.012 [.3 mm]	.010 [.25 mm]



Unless noted, all tolerances are as indicated here:



All Dowel Holes are SF (Slip Fit) Locational Tolerance ± .0005" [.013mm]



Metric Threads Course Pitch

Imperial: Inch
0.00 = ±.01
0.000 = ±.005
0.0000 = ±.0005

Metric: [0.] = ±.25
[0.0] = ±.13
[0.00] = ±.013

AGT-4 Powered Slide

Linear Thruster



FEATURES AND BENEFITS

- Floating piston rod coupling eliminates cylinder binding.
- Compact, lightweight unit with replaceable air-cylinder.
- Units are permanently lubricated.
- Optional stroke adjustment for precise, repetitive operation.
- Proximity switches are available to monitor end of stroke position of the body.
- Optional shock absorbers can be ordered for smooth operation.
- Aluminum body end blocks contain taped holes and dowel pin holes for precision mounting or fixturing.
- Standard end plate to stop shaft vibrations.

SPECIFICATIONS

Design: Replaceable air cylinder, linear bearings on steel hardened shafts

Stroke: 8 in max. (1" increments)
[203 mm] [25.4 mm]

Thrust Force @ 80 PSI [5.5 BAR]
70 lbs (multiply force factor by input pressure in PSI)

Extended: 88 lbs [392 N]

Retract: 81 lbs [360 N]

Recommended Speed: 1-40 in/sec

Pressure Range:
Low/High 20-120 PSI [1.4-8 BAR]

Temperature Range:
Low/High -20°/150°F [-28°/80°C]

Side Play: ± 0.001 [.03 mm]

Deflection: See Chart

Maximum Payload: 25 lbs [11.3 kg]

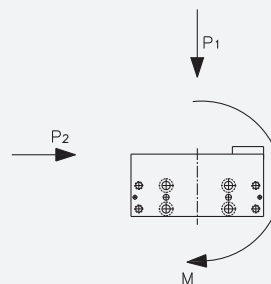
Material: High Strength, Aluminum Alloys, Steel Components

Weight: 3.75 lbs + 3 oz/in
[1.7 kg + 2.6 g/mm]

Shaft Diameter: 1/2 in [12.7 mm]

Piston Diameter: 1 1/16 in [27 mm]

PAYLOAD FORCES

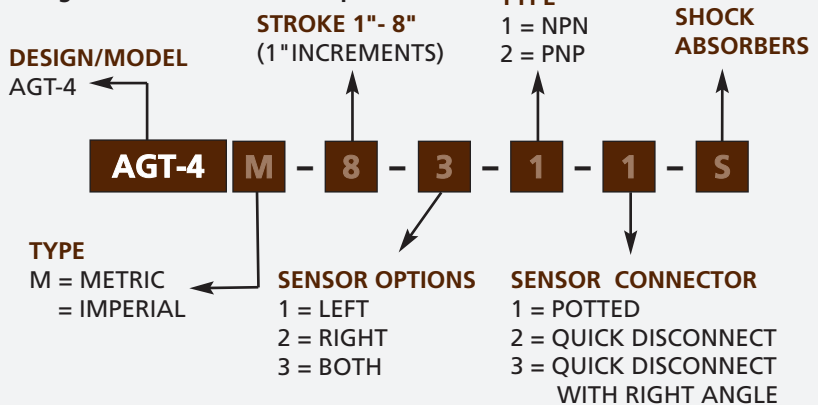


WARNING! Do not exceed mounting screw depth.

LOOK! More Technical specifications for sensors on "Sensors Accessories" page.

HOW TO ORDER

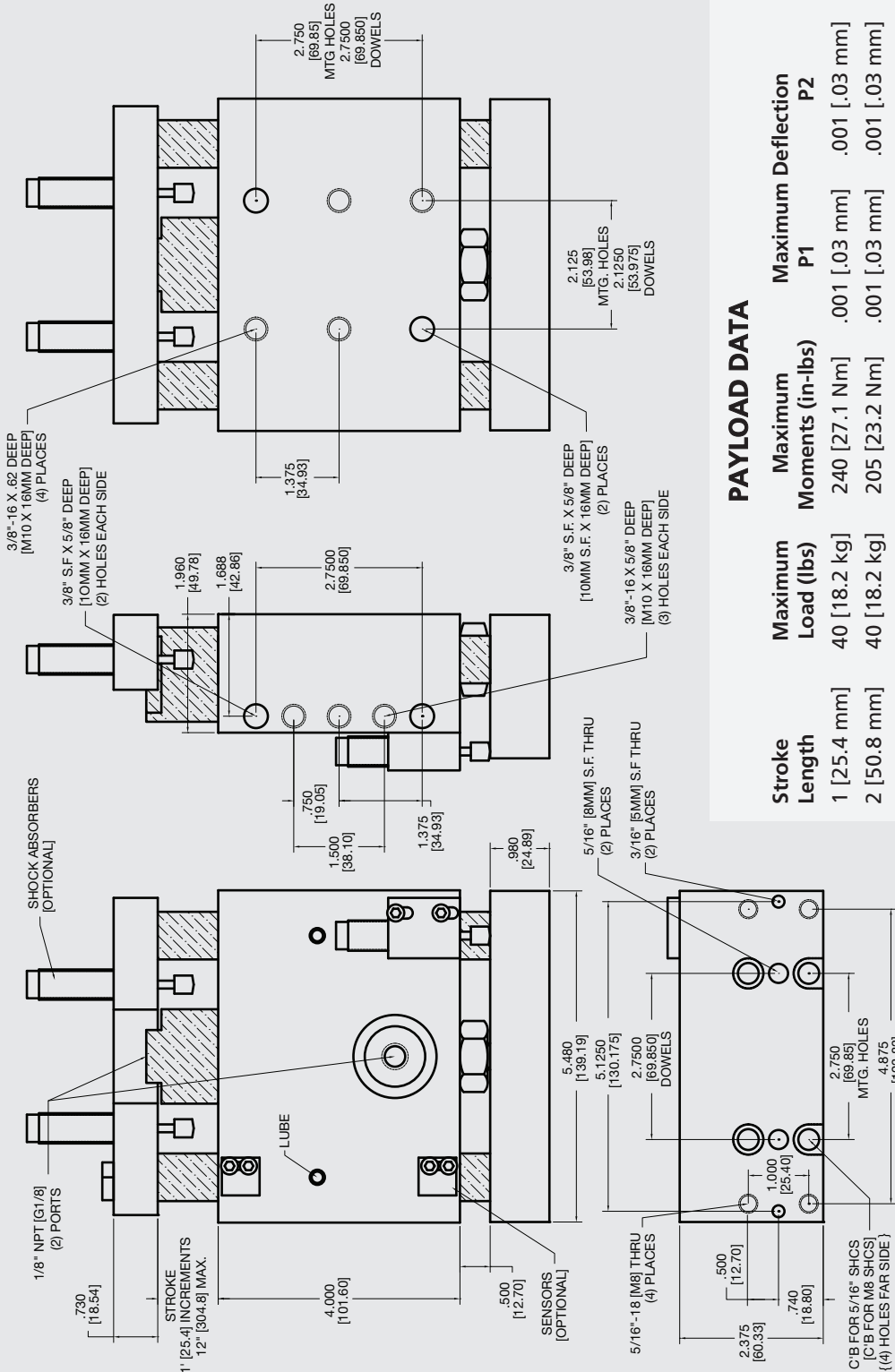
When ordering, please specify:
Design/Model Number and Options.



* NOTE: Proximity sensors are 8 mm diam., 12-30 VDC, 50 mA and come with 2 meter cable.

Sensor Part # SNC08, SNQ08, SPC08, SPQ08

January 2009 - PATENTED Made in the USA



PAYLOAD DATA

Stroke Length	Maximum Load (lbs)	Maximum Moments (in-lbs)	Maximum Deflection P1	Maximum Deflection P2
1 [25.4 mm]	40 [18.2 kg]	240 [27.1 Nm]	.001 [.03 mm]	.001 [.03 mm]
2 [50.8 mm]	40 [18.2 kg]	205 [23.2 Nm]	.001 [.03 mm]	.001 [.03 mm]
3 [76.2 mm]	40 [18.2 kg]	176 [19.9 Nm]	.003 [.07 mm]	.002 [.05 mm]
4 [101.6 mm]	40 [18.2 kg]	155 [17.5 Nm]	.004 [.10 mm]	.003 [.07 mm]
5 [127.0 mm]	40 [18.2 kg]	137 [15.5 Nm]	.007 [.17 mm]	.006 [.15 mm]
6 [152.4 mm]	40 [18.2 kg]	120 [12.5 Nm]	.009 [.22 mm]	.007 [.17 mm]
7 [XXX mm]	40 [18.2 kg]	110 [12.5 Nm]	.012 [.30 mm]	.010 [.25 mm]
8 [XXX mm]	40 [18.2 kg]	100 [11.3 Nm]	.016 [.40 mm]	.013 [.33 mm]
9 [XXX mm]	40 [18.2 kg]	93 [10.5 Nm]	.019 [.50 mm]	.016 [.40 mm]
10 [XXX mm]	40 [18.2 kg]	86 [9.7 Nm]	.022 [.55 mm]	.018 [.45 mm]
11 [XXX mm]	40 [18.2 kg]	80 [9 Nm]	.024 [.60 mm]	.020 [.50 mm]
12 [XXX mm]	40 [18.2 kg]	75 [8.5 Nm]	.025 [.63 mm]	.021 [.53 mm]

Unless noted, all tolerances are as indicated here:



All Dowel Holes are SF (Slip Fit) Locational Tolerance $\pm .0005"$ [.013mm]



Metric Threads Course Pitch

Imperial: Inch

0.00 = $\pm .01$
0.000 = $\pm .005$
0.0000 = $\pm .0005$

Metric: [.] = $\pm .25$
[0.] = $\pm .13$
[0.00] = $\pm .013$



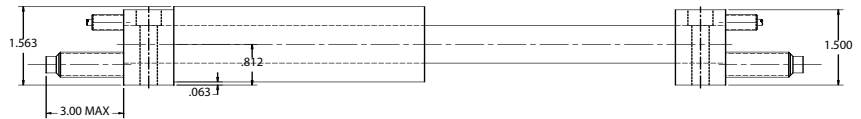
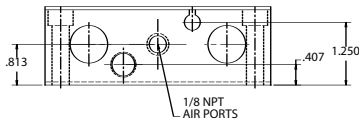
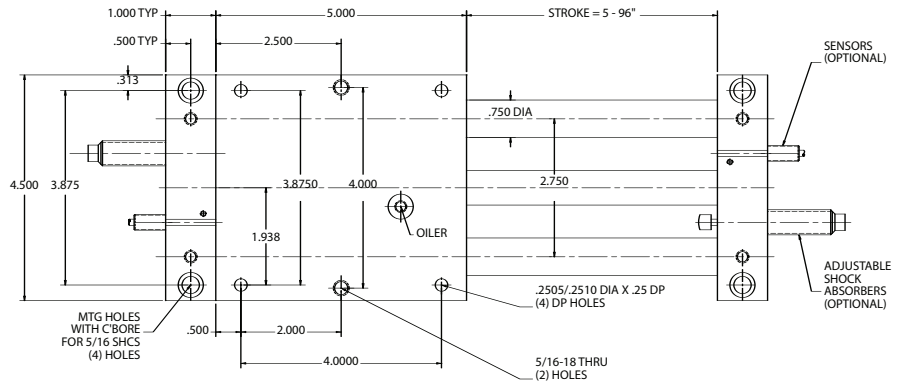


AGSL-5 LONGER STROKE POWERED SLIDE MAGNETICALLY COUPLED RODLESS CYLINDER

DIMENSIONAL DRAWING



Download 2 & 3D CAD Drawings:
www.AGI-AUTOMATION.com



SPECIFICATIONS

- Design:** Carriage magnetically coupled to piston
- Stroke:** 5 - 96 inches
- Thrust Force @ 80 psi** 24 lbs
- De-coupling Force** 35 lbs
- Recommended Speed** 2-16 in/sec
- Pressure Range**
 - Low: 26 psi
 - High: 101 psi
- Temperature Range**
 - Low: -14°F
 - High: 140°F
- Side Play:** ±.005 throughout the stroke
- Loading** 25 lbs max.
- Material** High Strength Aluminum Alloys, Steel Components.
- Weight:** 5.25 lbs x .28 lbs/in. of Stroke
- Piston Diameter:** .625 inch
- Cushion:** Cushioned at both sides

PAYLOAD DATA

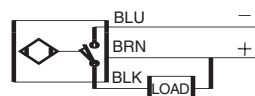
Static Loading			
Maximum Tensile T	200 lbs		
Maximum Compressive C	200 lbs		
Maximum Moment	400 in/lbs		
M_x, M_y, M_z	400 in/lbs		
Deflection @ max load	0.004		
Dynamic Loading	Stroke L		
Capacity	5-24"	25-48"	49-96"
Maximum Payload P	25 lbs	10 lbs	5 lbs
Maximum Moment	200 in/lbs	75 in/lbs	25 in/lbs
M_x, M_y, M_z	200 in/lbs	75 in/lbs	25 in/lbs

Recommended load for smooth operation.

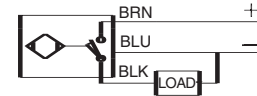
Shock Absorbers and Flow are recommended.

SENSORS WIRING DIAGRAM

NPN - Sinking



PNP - Sourcing



Unless noted, all tolerances are as indicated here



All Dowel Holes are SF (Slip Fit)
Locational Tolerance
±.0005" or (.013mm)



Metric Threads
Course Pitch

Imperial: 0.00 = ±.01
0.000 = ±.005
0.0000 = ±.0005

Metric: (0) = ±.25
(0.0) = ±.13
(0.00) = ±.013

March 2007
Made in the USA

Warning! Do not exceed mounting screw depth

Look! More Technical specifications for sensors on "Sensors Accessories" page.

To ORDER OR FOR MORE INFORMATION, PLEASE CALL (203) 459-8345, FAX (203) 452-5943
VISIT OUR WEBSITE AT: WWW.AGI-AUTOMATION.COM

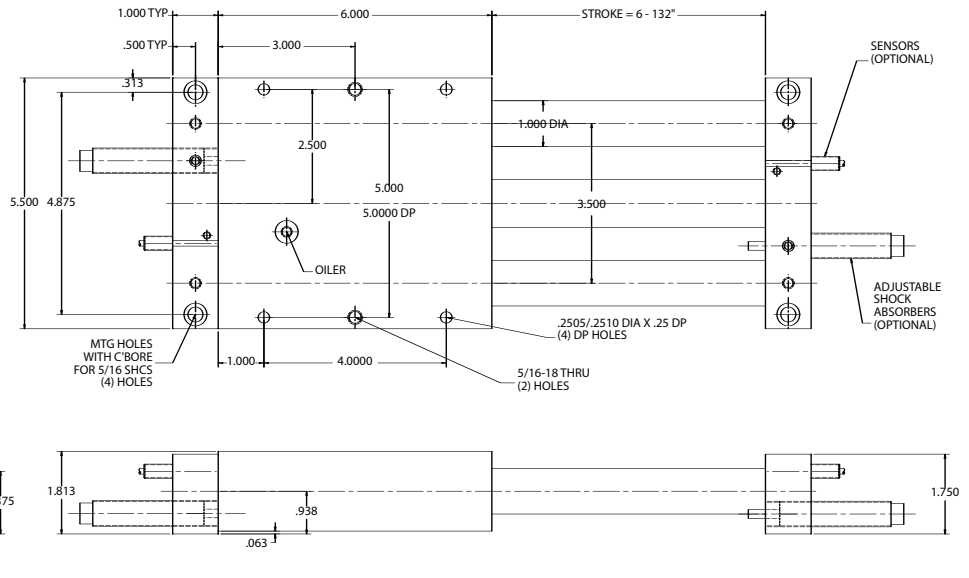


AGSL-6 LONGER STROKE POWERED SLIDE MAGNETICALLY COUPLED RODLESS CYLINDER

DIMENSIONAL DRAWING



Download 2 & 3D CAD Drawings:
www.AGI-AUTOMATION.com



SPECIFICATIONS

- Design:** Carriage magnetically coupled to piston
- Stroke:** 8-132 inches
- Thrust Force @ 80 psi:** 60 lbs
- De-coupling Force:** 90 lbs
- Recommended Speed:** 2-16 in/sec
- Pressure Range:**
 - Low: 26 psi
 - High: 101 psi
- Temperature Range:**
 - Low: -14°F
 - High: 140°F
- Side Play:** ±.005 throughout the stroke
- Loading:** 35 lbs max.
- Material:** High Strength Aluminum Alloys, Steel Components.
- Weight:** 5.25 lbs x .28 lbs/in. of Stroke
- Piston Diameter:** 1.0 inch
- Cushion:** Cushioned at both sides

PAYLOAD DATA

Static Loading

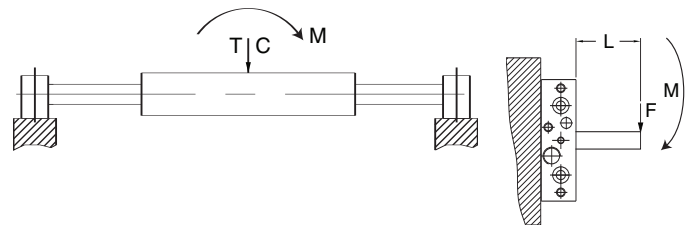
- Maximum Tensile **T** 300 lbs
- Maximum Compressive **C** 300 lbs
- Maximum Moment M_x, M_y, M_z 600 in/lbs

Deflection @ max load 0.005

Dynamic Loading Stroke L

Capacity	6-32"	33-64"	65-132"
Maximum Payload P	35 lbs	15 lbs	5 lbs
Maximum Moment M_x	275 in/lbs	100 in/lbs	30 in/lbs

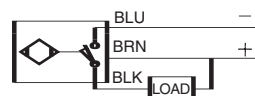
Recommended load for smooth operation.



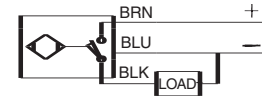
Shock Absorbers and Flow are recommended.

SENSORS WIRING DIAGRAM

NPN - Sinking



PNP - Sourcing



Unless noted, all tolerances are as indicated here



All Dowel Holes are SF (Slip Fit)
Locational Tolerance
±.0005" or (.013mm)



Metric Threads
Course Pitch

Imperial: 0.00 = ±.01
Inch 0.000 = ±.005
0.0000 = ±.0005

Metric: (0.) = ±.25
(mm) (0.0) = ±.13
(0.00) = ±.013

March 2007
Made in the USA

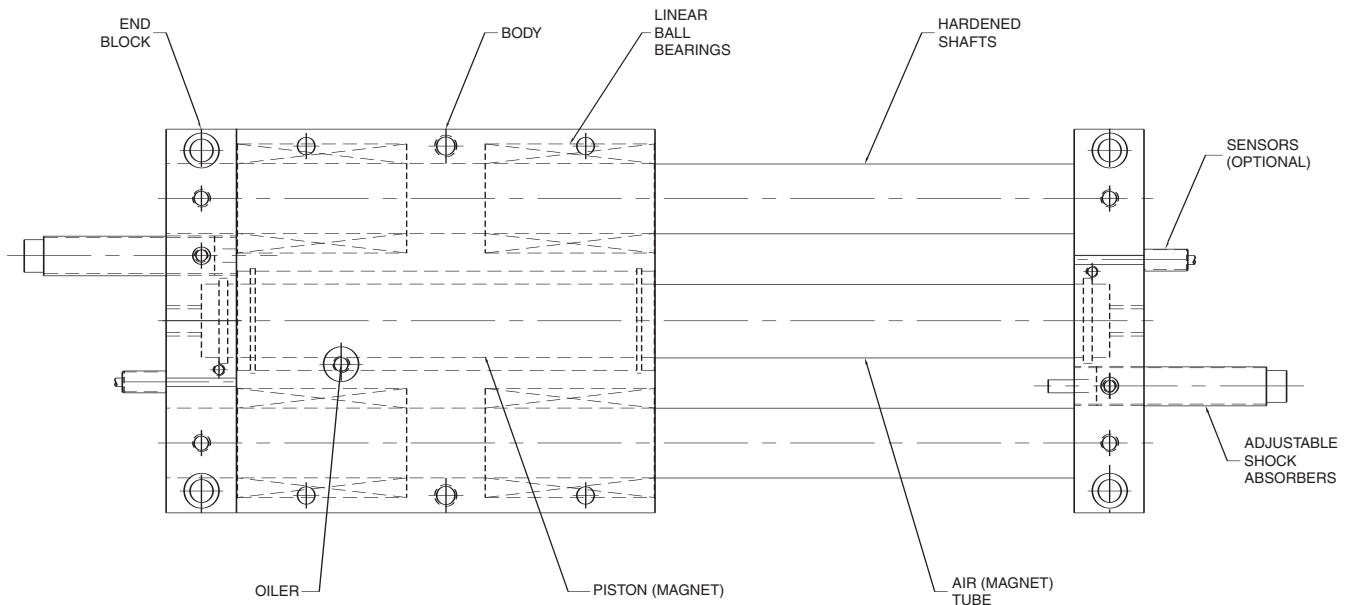
Warning! Do not exceed mounting screw depth

Look! More Technical specifications for sensors on "Sensors Accessories" page.

To ORDER OR FOR MORE INFORMATION, PLEASE CALL (203) 459-8345, FAX (203) 452-5943
VISIT OUR WEBSITE AT: WWW.AGI-AUTOMATION.COM

AGSL LONG STROKE POWERED SLIDE BUILT-IN AIR CYLINDER

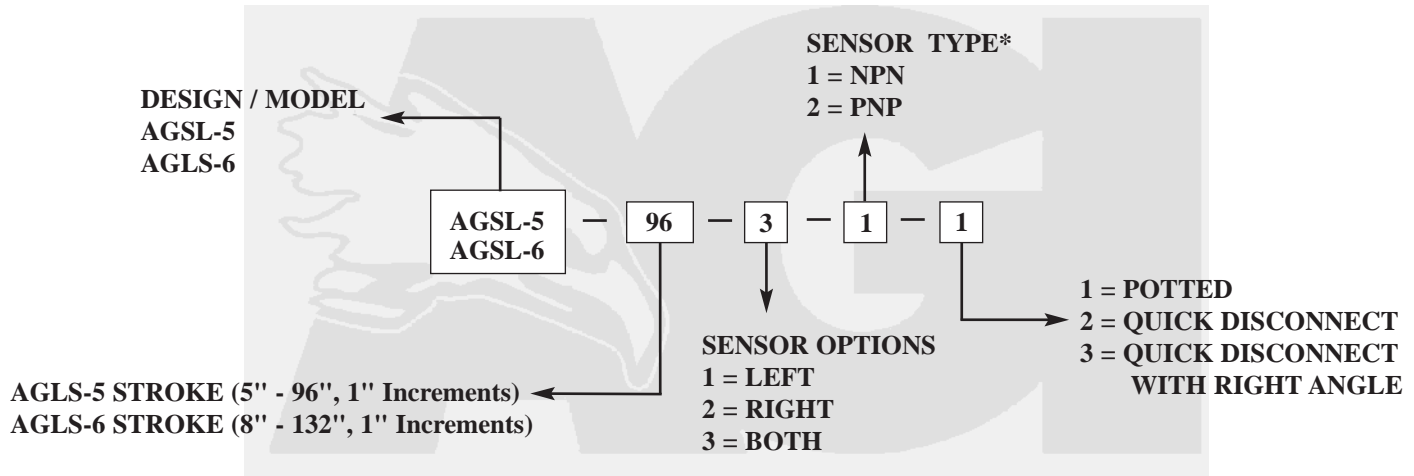
FEATURES AND BENEFITS



- Magnetically coupled cylinder is designed to be leak free due to no mechanical connection between the piston and the body.
- Prelubricated for miles of maintenance-free travel, with easily accessible carriage lubrication port.
- 304 stainless steel tubing and "U" cup seals for lower dynamic friction.
- Compact lightweight unit with built-in air cylinder.
- Linear ball bearings ride on precision ground and hardened shafting.
- Aluminum body and end blocks contain tapped holes for precision mounting or fixturing.
- Main body or end blocks can be anchored due to the 1/16" height difference.

HOW TO ORDER

When ordering, please specify: Design/Model Number and Options.



* NOTE: Proximity sensors are 8 mm dia., 12-30 VDC, 200 mA and come with 2 meter cable.
Sensor Part# SNC08, SNQ08, SPC08, SPQ08

MAIL, PHONE, FAX OR EMAIL YOUR ORDER TO: AMERICAN GRIPPERS, INC.
171 Spring Hill Road, Trumbull, CT 06611 Tel: 203-459-8345 • Fax: 203-452-5943
amerigrip@aol.com • www.AGI-AUTOMATION.com