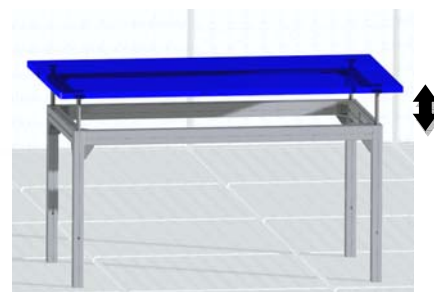
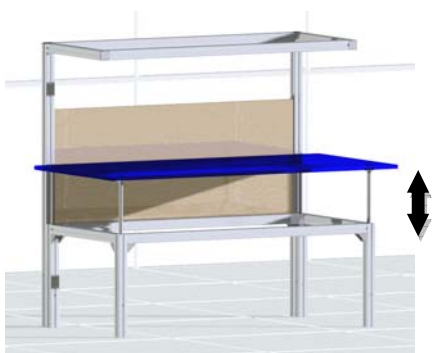
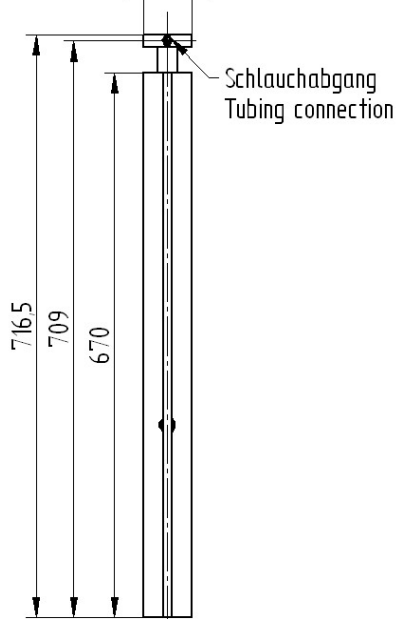
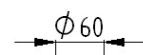
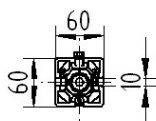


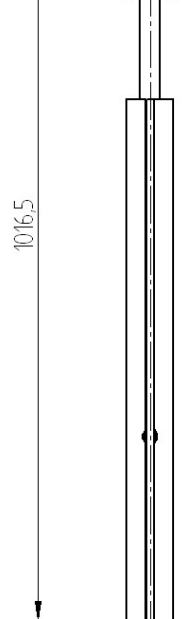
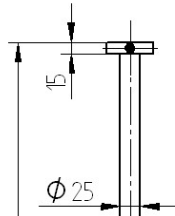
		Description
Retracted	Extended	<p>System TI Part no. 106.00203</p> <p>application possibilities: to adjust workbenches, assembly workplaces and conveyor systems</p>
		<p>Technical Data</p> <ul style="list-style-type: none"> • Lifting capacity max. 150 kg (1'500 N) per leg • higher ultimate load upon request • Please observe the max. load of the complete system • Stroke length max. 300 mm (690 – 990 mm) • Barrel: colourless anodized aluminium profile 60x60 • weight 4 kg • included are the rubber foot and 4m pre assembled pressure tubing



Retracted



Extended



Description

System TK

Part no. 106.00223

application possibilities:
to adjust table tops

Technical Data

- Lifting capacity max. 150 kg (1'500 N) per leg
- higher ultimate load upon request
- Please observe the max. load of the complete system
- Stroke length max. 300 mm (716.5 – 1016.5 mm)
- Barrel: colourless anodized aluminium profile 60x60
- weight 3.5 kg
- included is 3m pre assembled pressure tubing